



Farm Drive, Blyth

£125,000 Leasehold

This property is for sale at 50% shared ownership. This beautifully presented four bedroom detached family home offers spacious and versatile accommodation, perfectly suited for modern family living. Upon entering, you are welcomed by a bright and airy hallway that leads seamlessly into the impressive open plan lounge, kitchen, and dining area, creating a sociable and inviting space ideal for both relaxing evenings and entertaining guests. The kitchen is thoughtfully designed with contemporary fittings and integrated appliances ensuring both style and practicality. The lounge and dining areas benefit from large windows that fill the space with natural light, enhancing the sense of openness throughout. Upstairs, the property boasts four well-proportioned bedrooms, each finished to a high standard, providing comfortable retreats for all family members. The principal bedroom features a modern en-suite shower room, while the remaining bedrooms are served by a stylish family bathroom, finished with sleek fixtures and fittings. Additional features include a convenient downstairs cloakroom, a spacious integral

Entrance

Via double glazed door into hallway

Hallway

Two cupboards, radiator, stairs to first floor landing.

Living Room/Dining Room

16' 1" x 11' 5" (4.89m x 3.48m)

Double glazed French doors and windows to rear.

Open Plan Kitchen

15' 11" x 9' 1" (4.84m x 2.77m)

Fitted with a range of wall and base units to round edged work tops, electric oven and gas hob with stainless steel extractor hood over, stainless steel sink with mixer taps, integrated fridge freezer and washing machine, and dishwasher, spot lights to ceiling, double glazed window.

WC

Low level wc, pedestal wash hand basin, radiator, extractor fan.

First Floor Landing

Storage cupboard, loft hatch, radiator.

Bedroom One

14' 10" x 9' 9" (4.52m x 2.98m)

Radiator, double glazed window to front.

Ensuite

Low level wc, wash hand basin, double shower with mains shower, spot lights to ceilings, part tiled walls.

Bedroom Two

15' 0" x 8' 8" (4.56m x 2.65m)

Radiator, double glazed window.

Bedroom Three

12' 6" x 9' 4" (3.82m x 2.85m)

Radiator, double glazed window.

Bedroom Four

7' 0" x 8' 8" (2.13m x 2.63m)

Radiator, double glazed window.

Bathroom/WC

Low level wc, pedestal wash hand basin, part tiled walls, extractor fan, panelled bath with shower attachment. chrome heated towel rail.

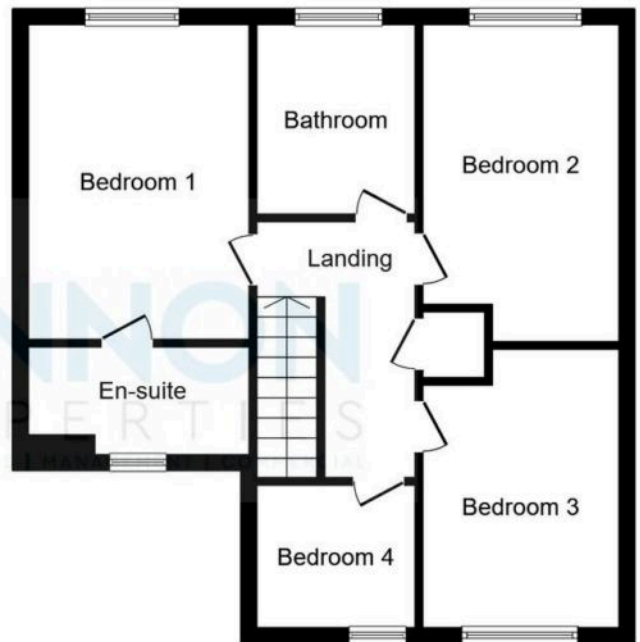






Ground Floor

Floor area 56.0 sq.m. (602 sq.ft.)



First Floor

Floor area 55.9 sq.m. (602 sq.ft.)

Total floor area: 111.9 sq.m. (1,205 sq.ft.)

This floor plan is for illustrative purposes only. It is not drawn to scale. Any measurements, floor areas (including any total floor area), openings and orientations are approximate. No details are guaranteed, they cannot be relied upon for any purpose and do not form any part of any agreement. No liability is taken for any error, omission or misstatement. A party must rely upon its own inspection(s). Powered by www.Propertybox.io

You can include any text here. The text can be modified upon generating your brochure.



You can include any text here. The text can be modified upon generating your brochure.

