



## 83 Crowhurst Crescent

Storrington | West Sussex | RH20 4QU

A two bedroom terraced home delightfully situated within this quiet courtyard style setting overlooking woodland to the front conveniently located close to the village centre. Internally, the property is presented in good order. Accommodation comprises: ground floor cloakroom, kitchen with built-in oven and hob, sitting room/dining room, two double bedrooms with adjoining en-suite bathroom and shower room, uPVC double glazed windows, gas fired central heating and allocated parking.



**Entrance** uPVC part glazed front door to:

**Entrance Hall** Shelved built-in storage cupboard, telephone point, square archway through to kitchen.

**Ground Floor Cloakroom** Low level flush w.c., inset vanity wash hand basin with toiletries cupboards under, radiator, extractor fan.

**Kitchen 9' 3" x 5' 7" (2.82m x 1.7m)** Inset one and a half bowl stainless steel single drainer sink unit with swan neck mixer tap, range of laminate working surfaces with drawers and cupboards under, eye-level cupboards with crockery display unit, built-in fan assisted oven and grill with four ring gas hob and extractor over, space and plumbing for washing machine and dishwasher, uPVC double glazed window, recessed area suitable for housing fridge/freezer, tiled flooring, door to:

**Sitting Room/Dining Room 18' 0" x 12' 7 maximum" (5.49m x 3.84m)** Laminate flooring, recessed understairs area, two radiators, fireplace with fitted electric fire, coved ceiling, wall-mounted thermostat control for central heating, uPVC double glazed doors leading to paved terraced area and rear garden, stairs to:

**First Floor Landing** Access to loft space.

**Bedroom One 12' 6" x 9' 4" (3.81m x 2.84m)** Radiator, uPVC double glazed windows, shelved linen cupboard housing hot water cylinder.

**En-Suite Shower Room** Low level push flow w.c., inset marble vanity wash hand basin with toiletries cupboards under, shaver and light point, limestone flooring, fully enclosed shower cubicle with fitted independent chrome shower unit, limestone tiling, vertical towel rail, extractor.

**Bedroom Two 12' 6" x 8' 5" (3.81m x 2.57m)** Radiator, uPVC double glazed window.

**En-Suite Bathroom** Panelled bath with fitted shower attachment with folding screen, inset wash hand basin with low level flush w.c., tiled flooring, part tiled walls, radiator, extractor.

## Outside

**Rear Garden** Stone Indian slate paved terraced area, enclosed by fence panelling, further steps up to lawn section of garden.

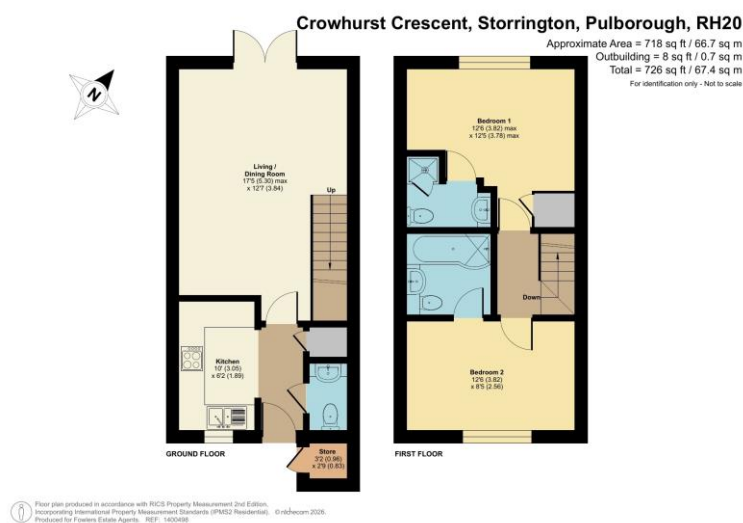
## Front

**Parking** Allocated parking area and visitor parking.

**EPC Rating:** Band C.



Fowlers Greenfield House, The Square, Storrington, West Sussex, RH20 4DJ [www.fowleronline.co.uk](http://www.fowleronline.co.uk) [storrington@fowleronline.co.uk](mailto:storrington@fowleronline.co.uk) 01903 745844



## Important Notice

1. Fowlers wish to inform all prospective purchasers that these sales particulars do not form part of any contract and have been prepared in good faith to give a fair overall viewing of the property.
2. We have not undertaken a structural survey, nor tested that the services, appliances, equipment or facilities are in good working order.
3. Fowlers cannot verify that any necessary consents have been obtained for conversions, extensions and other alterations such as underpinning,

garaging and conservatories etc. Any reference to such alterations is not intended as a statement that any necessary planning or building consents have been obtained and if such details are fundamental to a purchase, then prospective buyers should contact this office for further information or make further enquiries on their own behalf.

4. Any area, boundary, distances or measurements referred to are given as a guide only and should not be relied upon. If such details are fundamental to a purchase, please contact this office for further information.

5. The photographs shown in these details show only certain aspects of the property at the time they were taken. Certain aspects therefore may have changed and it should not be assumed that the property remains precisely as displayed in the photographs.
6. Fowlers cannot verify whether the property and its grounds are subject to any restrictive covenants, rights of way, easements etc, and purchasers are advised to make further enquiries to satisfy themselves on these points.