



**CPH** ESTATE AGENTS &  
CHARTERED SURVEYORS  
*For over 30 years*

21 New Queen Street, Scarborough  
£200,000





## 21 New Queen Street

- TWO RECEPTION ROOMS, TWO BATHROOMS & THREE WC'S
- CENTRAL LOCATION WITHIN SCARBOROUGH
- EIGHT BEDROOM TERRACED HOME
- GENEROUS LIVING PROPORTIONS - OVER FIVE FLOORS
- HMO LICENSE FOR 6 OCCUPANTS

Nestled in the heart of Scarborough, on New Queen Street, this impressive eight-bedroom townhouse presents a unique opportunity for both investors and large families. Currently configured as a six-bedroom house of multiple occupancy, this property is arranged over five well-designed floors, offering ample space and versatility.

Upon entering, you are greeted by a welcoming entrance hall that leads to a downstairs bedroom, a comfortable sitting room, and a convenient WC. The lower ground floor features a spacious lounge, a well-equipped kitchen, a utility area, and an additional WC, making it ideal for communal living or family gatherings.

As you ascend to the first floor, you will find a landing that connects two generously sized bedrooms, alongside a bathroom complete with a separate shower for added convenience. The second floor continues to impress with another landing, two more bedrooms, bathroom and additional shower room, ensuring that there is no shortage of private spaces for residents. The third floor boasts three additional bedrooms and a separate WC, providing even more flexibility for living arrangements.

The property's fantastic location is a significant highlight, situated within close walking distance to Scarborough's vibrant town centre and the picturesque North Bay beach. This prime position not only offers easy access to local amenities but also allows residents to enjoy the stunning coastal scenery that Scarborough is renowned for.







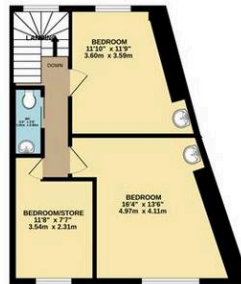
LOWER GROUND FLOOR  
504 sq.ft. (46.8 sq.m.) approx.



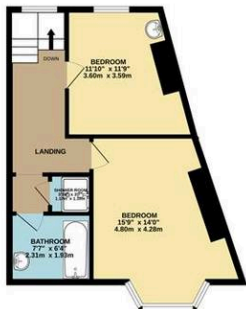
GROUND FLOOR  
458 sq.ft. (42.6 sq.m.) approx.



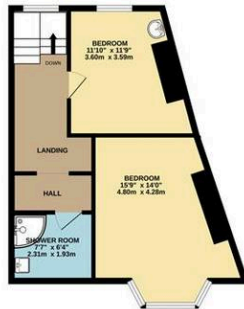
3RD FLOOR  
421 sq.ft. (39.1 sq.m.) approx.



1ST FLOOR  
442 sq.ft. (40.9 sq.m.) approx.



2ND FLOOR  
440 sq.ft. (40.9 sq.m.) approx.



TOTAL FLOOR AREA : 2265 sq.ft. (210.5 sq.m.) approx.

Whilst every attempt has been made to ensure the accuracy of the floorplan contained here, measurements of doors, windows, rooms and any other items are approximate and no responsibility is taken for any error, omission or mis-statement. This plan is for illustrative purposes only and should be used as such by any prospective purchaser. The services, systems and appliances shown have not been tested and no guarantee as to their operability or efficiency can be given.  
Made with Metropix ©2025

*Interested?*

Contact our friendly team today  
☎ 01723 352235 | ✉ sales@cphproperty.co.uk

With you every step of the way



**Sales, Lettings & Commercial**  
ESTATE AGENTS & CHARTERED SURVEYORS  
19 St. Thomas Street, Scarborough YO11 1DY



rightmove Zoopla.co.uk PrimeLocation.com

NOTE: These particulars are intended only as a guide to prospective Purchasers to enable them to decide whether to make further enquiries with a view to taking up negotiations but they are otherwise not intended to be relied upon in any way for any purpose whatsoever and accordingly neither their accuracy nor the continued availability of the property is in any way guaranteed and they are furnished on the express understanding that neither the Agents nor the Vendors are to be or become under any liability or claim in respect of their contents. Any prospective Purchaser must satisfy himself by inspection or otherwise as to the correctness of the particulars contained. C132