

Athole Street

Salford

HILLS

£180,000

Athole Street

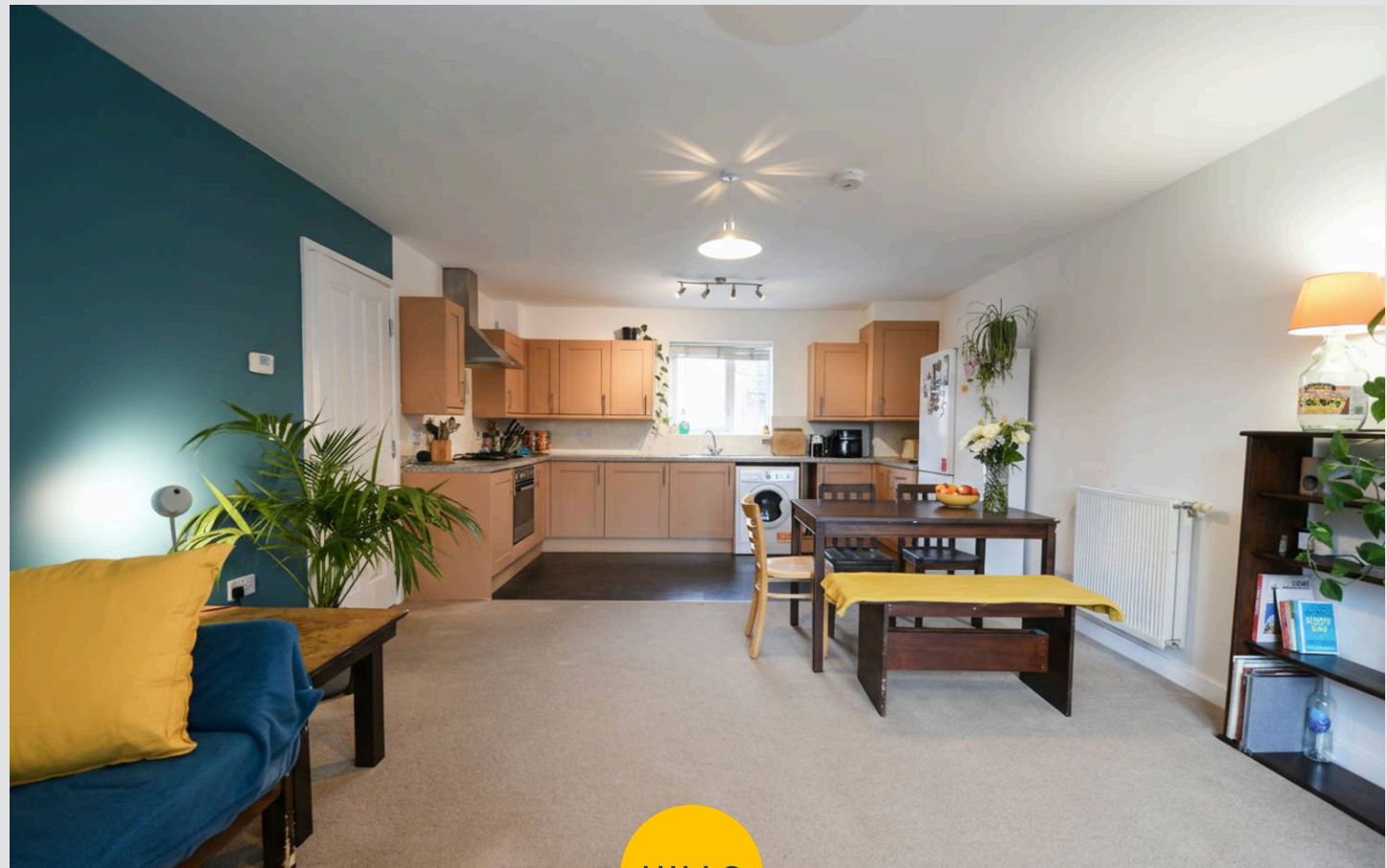
Salford

Fantastic two double bedroom apartment benefitting from secure, allocated parking, a large open plan kitchen and living area and a modern three piece bathroom suite!

Council Tax band: A

Tenure: Leasehold

- Spacious two double bedroom apartment located on the popular Pendleton One Development
- Located close to Salford Quays, MediaCityUK and excellent transport links into Manchester
- Exceptional condition throughout, highly recommended for viewing
- Secure, private allocated parking and communal gardens
- Large 22ft open plan kitchen and lounge complete with a private balcony
- Would make a terrific first home or potential investment
- Modern three piece bathroom suite
- Built in storage
- Intercom access and well-kept communal hallways



HILLS



Entrance Hallway

Lounge

15' 9" x 14' 1" (4.80m x 4.28m)

Kitchen

7' 5" x 14' 2" (2.25m x 4.33m)

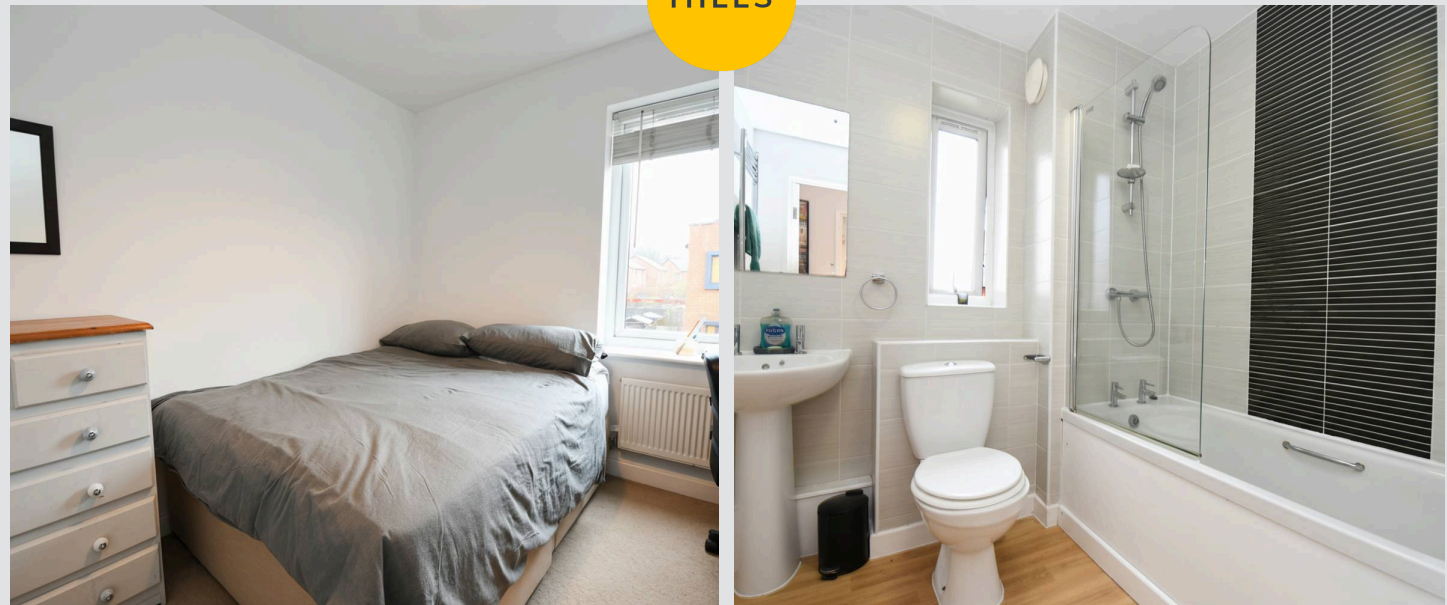
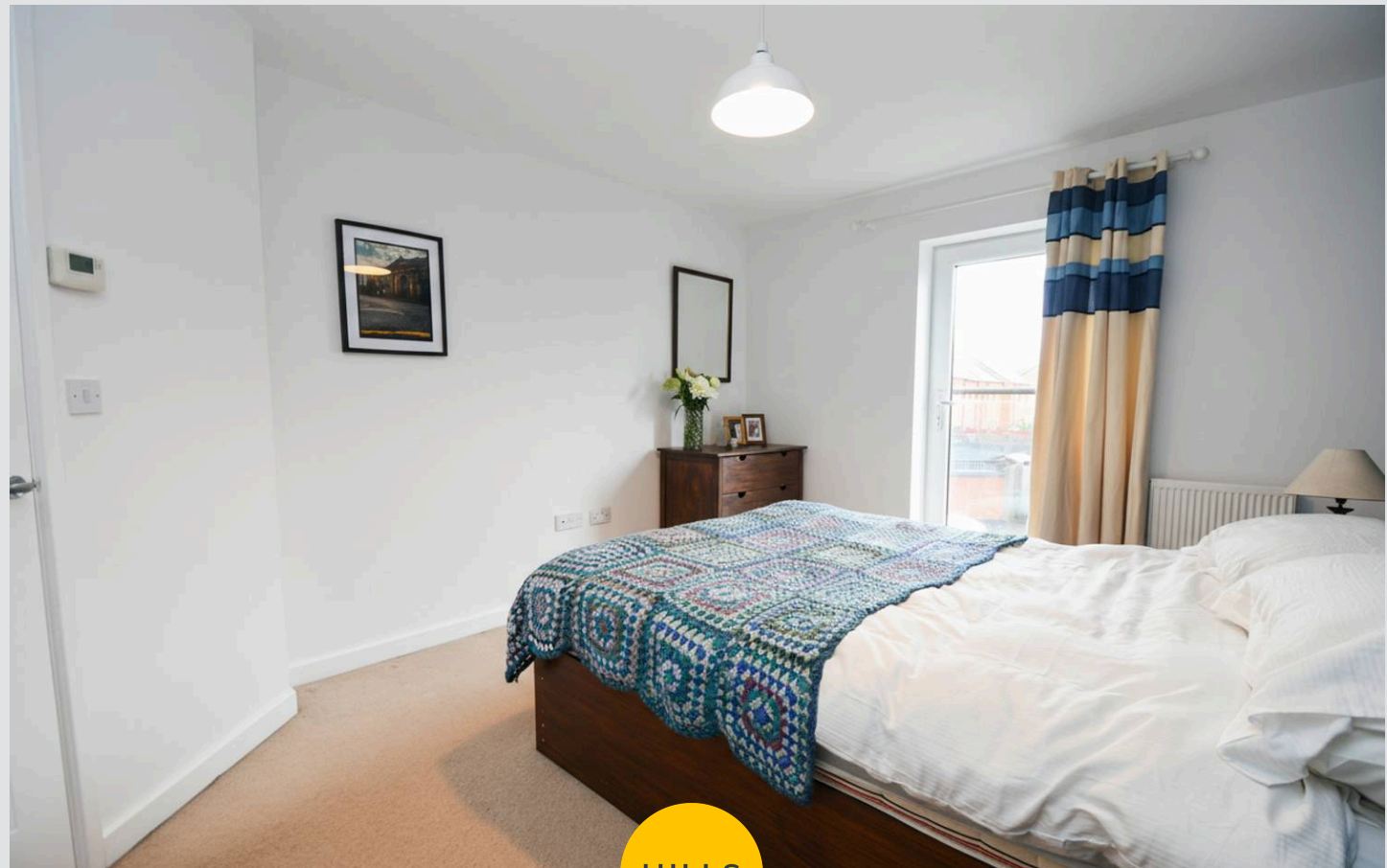
Bedroom One

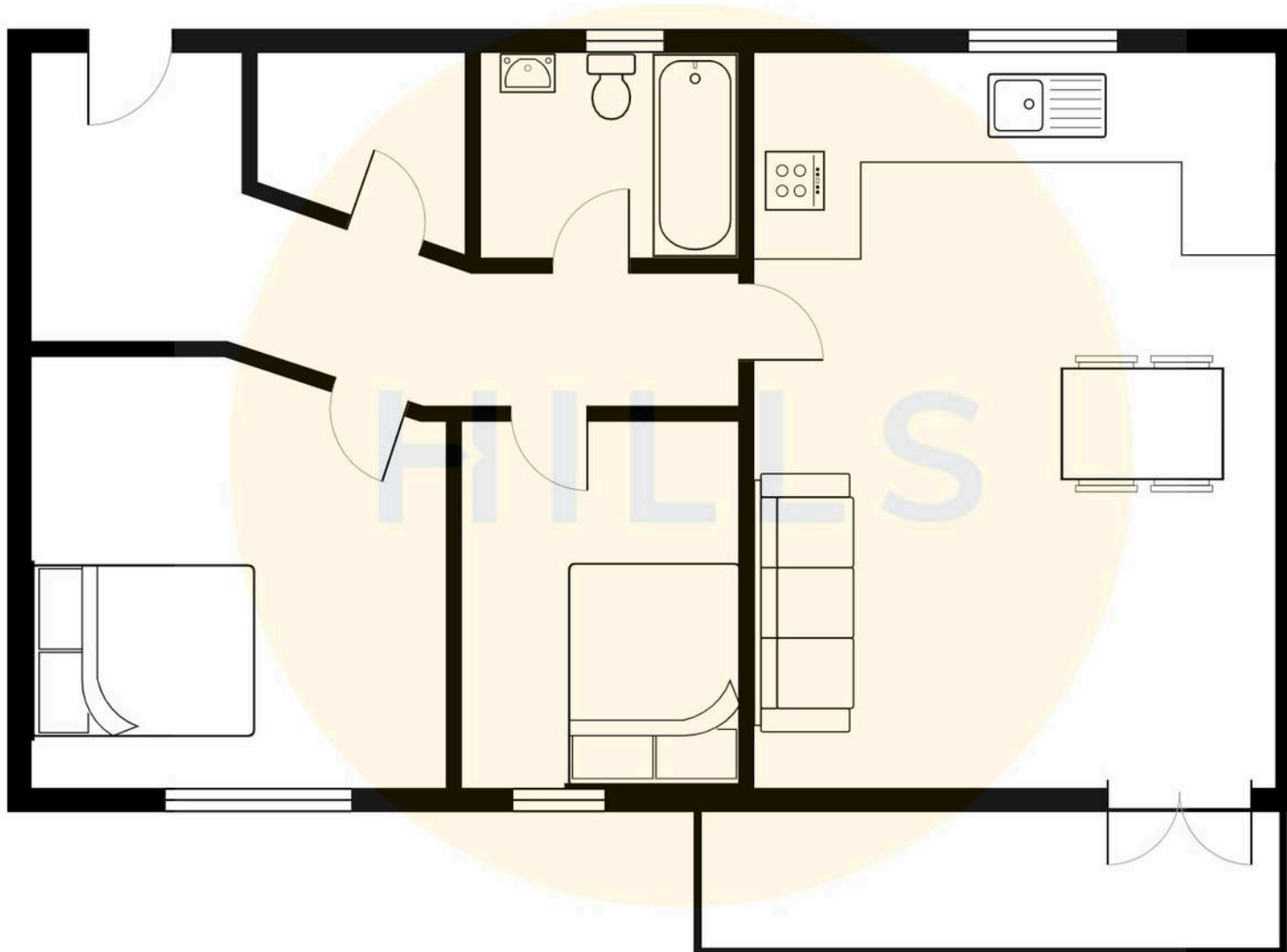
10' 8" x 14' 10" (3.25m x 4.52m)

Bedroom Two

9' 9" x 8' 2" (2.97m x 2.48m)

Bathroom







Hills | Salfords Estate Agent

Hills Residential, Sentinel House Albert Street – M30 0SS

0161 707 4900

sales@hills.agency

www.hills.agency/



By law, we are required to conduct anti-money laundering checks on all potential buyers and sellers. In line with HMRC guidelines, our trusted partner, Coadjute, will securely manage these checks on our behalf. A non-refundable fee of £45 + VAT per person will apply, and Coadjute will handle the payment. Once an offer is accepted, Coadjute will send a secure link for you to complete the biometric checks. These checks must be completed before we can send the memorandum of sale to all parties. PLEASE NOTE: The Agent has not tested any equipment, fixtures, fittings or services so cannot verify that they are in working order or fit for the purpose. References to the properties tenure are based on information supplied by the seller. You are advised to check the availability of this property before travelling any distance to view. Every effort has been made to ensure these particulars are correct and not misleading but their accuracy is not guaranteed nor do they form part of any contract.