



Netherton Grove

LONDON SW10



A wide semi-detached period family house with off street parking a west facing garden and a splendid studio style reception room with 3.8m ceiling height.

Quietly situated towards the southern end of this peaceful cul-de-sac an imposing semi-detached period house approx. 30ft wide overall, with elegant reception rooms, off street parking for 2 cars and a stylish studio enjoying a ceiling height of over 3.8m. The house is set back from the road and arranged across just 4 floors with a secluded West facing garden.

Netherton Grove is a quiet cul-de-sac off the Fulham Road, well located for excellent local amenities.



Accommodation

Entrance Hall | Three Reception Rooms
Studio Drawing Room | Fully Fitted Kitchen
Cloakroom | 4 Bedrooms | 4 bathrooms (three en-suite) | West facing rear garden | Off Street Parking
Balcony | Terrace



Terms

FREEHOLD
 ASKING PRICE £5,950,000
 EPC RATING E
 COUNCIL TAX BAND X
 LOCAL AUTHORITY THE ROYAL
 BOROUGH OF KENSINGTON AND
 CHELSEA

N E T H E R T O N G R O V E





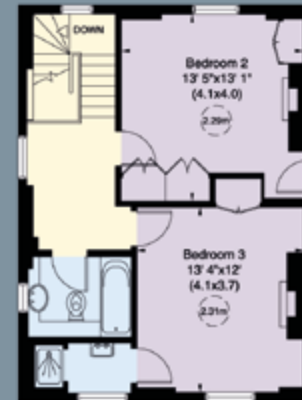
Approximate Gross Internal Area
289 SQ M / 3,106 SQ FT



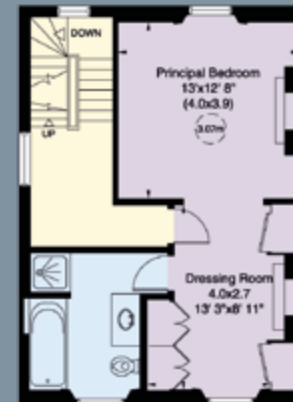
Ground Floor



Raised Ground Floor



Second Floor



First Floor



AYLESFORD
INTERNATIONAL

020 7351 2383
sales@aylesford.com
www.aylesford.com

fgconsultants

020 7937 7787

www.fgconsultants.com
4 Pembroke Mews, London W8 6ER