

EST 1770



Longstaff INC. Eckfords

BOURNE RESIDENTIAL: 01778 420406 www.longstaff.com



55 Haydock Park Drive , Bourne, PE10 0WJ

£255,000 Freehold

- End Terraced Town House
- Popular Residential Location
- Entrance Hallway, Cloakroom
- Kitchen

Stunning, spacious and immaculately presented town house located in a popular residential location. This property benefits from a lovely modern kitchen, lounge/diner and three double bedrooms. Viewing is highly recommended at the earliest opportunity to appreciate everything this property has to offer.

SPALDING 01775 766766 BOURNE 01778 420406

ESTATE AGENTS ~ VALUERS ~ AUCTIONEERS ~ SURVEYORS ~ LETTINGS ~ RESIDENTIAL ~ COMMERCIAL ~ AGRICULTURAL



GROUND FLOOR

ACCOMMODATION

Front door to Entrance Hallway: Radiator, stairs to first floor, two under stairs storage cupboard, inset ceiling spotlights.

CLOAKROOM

Low level WC with concealed flush, pedestal wash hand basin, complimentary splash back tiling, ceramic floor tiles, radiator.

KITCHEN

8' 4" x 11' 2" (2.54m x 3.4m) Fitted wall mounted and floor standing grey fronted cupboards including four drawers, complimentary fitted worktops and splash back tiling, inset one and a quarter bowl stainless steel sink and drainer with mixer tap, four ring gas hob with extractor canopy over, double electric oven, integrated dishwasher and washing



machine, tall ladder style cupboard, inset ceiling spot lights.

LOUNGE/DINER

12' 2" max x 15' 7" max (3.71m x 4.75m) Two radiators, TV point, telephone point, wall mounted thermostatic heating control, French doors to outside.

FIRST FLOOR

Radiator, stairs to second floor.

BEDROOM 2

11' 0" x 15' 8" (3.35m x 4.78m) Radiator, two windows to rear.

BEDROOM 3

8' 4" x 9' 5" (2.54m x 2.87m) Radiator, window to front.

BATHROOM

8' 4" x 6' 4" (2.54m x 1.93m) Panelled bath with mixer shower attachment, low level WC with concealed flush, complimentary splash back tiling, vinyl flooring, chrome heated ladder towel rail.

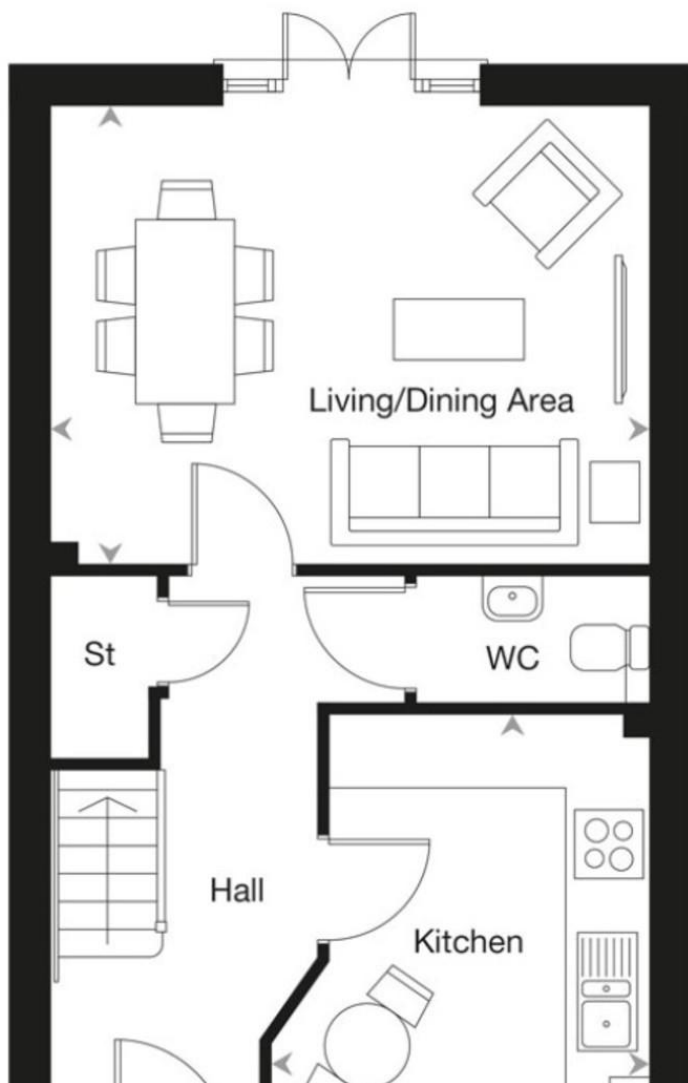
SECOND FLOOR

MASTER BEDROOM

15' 8" max x 17' 4" max (4.78m x 5.28m) A wow factor large Master suite, vaulted ceiling, built in wardrobes to one wall, four wall light points, radiator, window to front and velux window to rear.

ENSUITE SHOWER ROOM

Double width shower cubicle with glass door, low level WC with concealed flush, pedestal wash hand basin, chrome heated ladder towel rail, wooden effect vinyl flooring, velux window electric shaver point, extractor fan.



Score	Energy rating	Current	Potential
92+	A		94 A
81-91	B	84 B	
69-80	C		
55-68	D		
39-54	E		
21-38	F		
1-20	G		

TENURE Freehold

SERVICES TBC

COUNCIL TAX BAND C

LOCAL AUTHORITIES

South Kesteven District Council 01476 406080

Anglian Water Services Ltd. 0800 919155

Lincolnshire County Council 01522 552222

PARTICULARS CONTENT

R. Longstaff & Co LLP, their clients and any joint agents accept no responsibility for any statement that may be made in these particulars. They do not form part of any offer or contract and must not be relied upon as statements or representations of fact. They are not authorised to make or give any representations or warranties in relation to the property either here or elsewhere, either on their own behalf or on behalf of their client(s) or otherwise. All areas, measurements or distances are approximate. Floor plans are provided for illustrative purposes only and are not necessarily to scale. All text, photographs and plans are for guidance only and are not necessarily comprehensive. It should not be assumed that the property has all necessary planning, building regulation or other consents, and no guarantee is given for any apparatus, services, equipment or facilities, being connected nor in working order. Purchasers must satisfy themselves of these by inspection or otherwise.

Ref: 17577

Viewings are to be arranged by prior appointment. We make every effort to produce accurate and reliable details but if there are any particular points you would like to discuss prior to making your inspection, please contact our office. We suggest you contact us to check the availability of this property prior to travelling to the area in any case.

ADDRESS

R. Longstaff & Co LLP.

23 North Street

Bourne

Lincolnshire

PE10 9AE

CONTACT