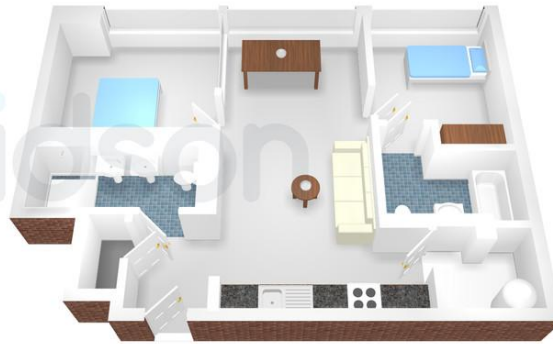
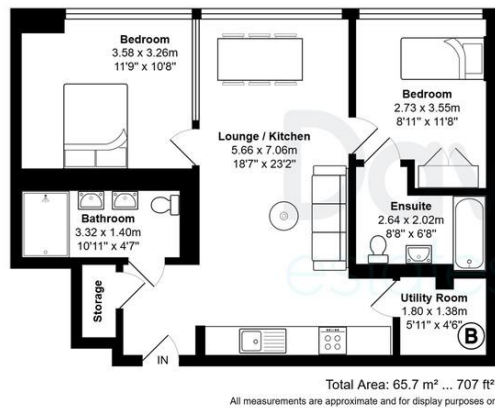


# PHOTOGRAPHIC WORKS, 41 CAMDEN STREET, B1

£325,000  
LEASEHOLD

PHOTOGRAPHIC WORKS | Two Bedrooms | Two Bathrooms | Top Floor | Secure & Allocated Parking | No Chain

Davidson



Floorplan measurements are for illustrative purpose only. Floor plan by [www.sebastiano.co.uk](http://www.sebastiano.co.uk).

Score	Energy rating	Current	Potential
92+	A		
81-91	B		
69-80	C	69 C	69 C
55-68	D		
39-54	E		
21-38	F		

# Davidson

OFFICE  
22 Harborne Road  
Birmingham  
West Midlands  
B15 3AA

0121 455 7727  
[info@davidsonestates.co.uk](mailto:info@davidsonestates.co.uk)  
[www.davidsonestates.co.uk](http://www.davidsonestates.co.uk)

Agents Note: Whilst every care has been taken to prepare these particulars, they are for guidance purposes only. All measurements are approximate and are for general guidance purposes only and whilst every care has been taken to ensure their accuracy, they should not be relied upon and potential buyers/tenants are advised to recheck the measurements