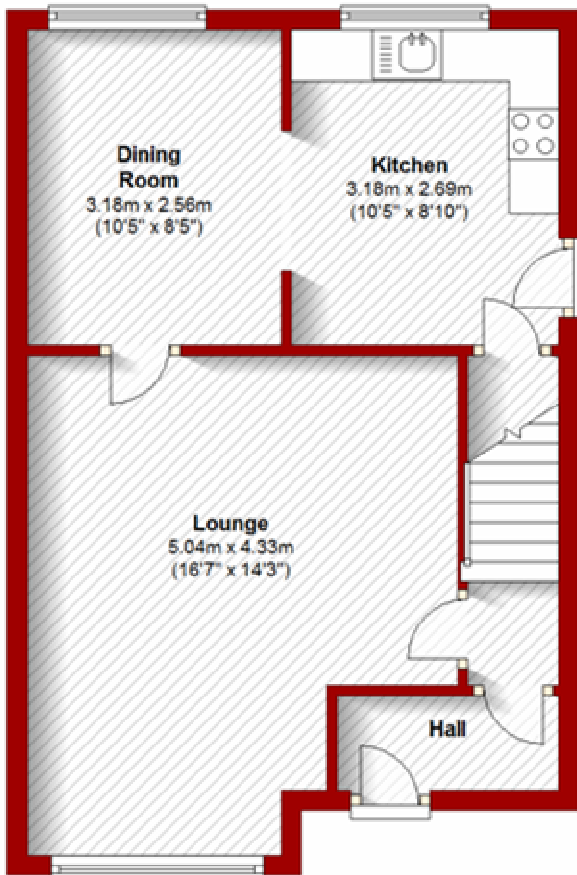


57 Montrose Drive
Garthdee
Aberdeen
AB10 7BX

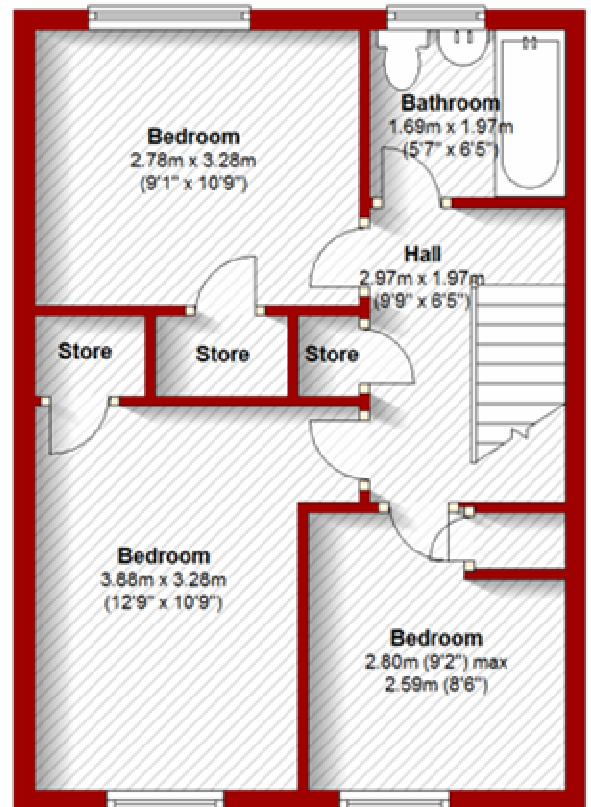
Ground Floor

Approx. 41.2 sq. metres (443.2 sq. feet)



First Floor

Approx. 38.8 sq. metres (417.4 sq. feet)



Total area: approx. 80.0 sq. metres (860.6 sq. feet)

The above particulars are for guidance only, no liability for any errors or omissions will be accepted by Aberdeen Property Leasing Ltd.