



First Floor Apartment

CHECK OUT this beautifully presented apartment featuring one double bedroom, an open-plan living/dining/kitchen area, modern bathroom and secure underground parking. Located in Exeter city centre, walking distance from local cafes, bars, restaurants and shops.

3 Mount Dinham Court | Exeter | EX4 4FP





PROPERTY TYPE

First Floor Apartment



SIZE

444sq ft



LOCATION

Urban



AGE

Modern



BEDROOMS

1



RECEPTION ROOMS

1



BATHROOMS

1



WARMTH

Gas Fired Central Heating



PARKING

Secure Gated Parking



OUTSIDE SPACE



EPC RATING

80C



COUNCIL TAX BAND

A



in a nutshell...

- Double Bedroom
- Open Plan Living/Dining/Kitchen
- Modern Bathroom
- Secure Underground Parking
- Beautifully Presented
- City Centre Location
- Ideal First Home or Investment
- Complete Upper Chain
- 181 Years Left on Lease





the details...

This beautifully presented one-bedroom apartment offers a smart and efficient layout, ideal for first-time buyers, downsizers, or investors seeking a low-maintenance home with modern appeal.

Set within a characterful Victorian building, the property features a well-designed open-plan kitchen/living area that makes excellent use of the space. The modern kitchen includes an integrated gas hob, electric oven and washing machine, along with space for a fridge/freezer.

The double bedroom is generously proportioned, with ample room for a wardrobe and plenty of natural light from the front-facing window. A useful fitted cupboard is positioned just outside the bedroom, providing valuable additional storage. Completing the accommodation is a contemporary bathroom fitted with a tiled bath and shower over, WC, wash basin, heated towel rail and practical vinyl flooring.

Outside, the property benefits from an allocated parking space within a secure underground car park.

Tenure - Leasehold

Lease Start Date - 29 Nov 2012

Lease Term - 199 years

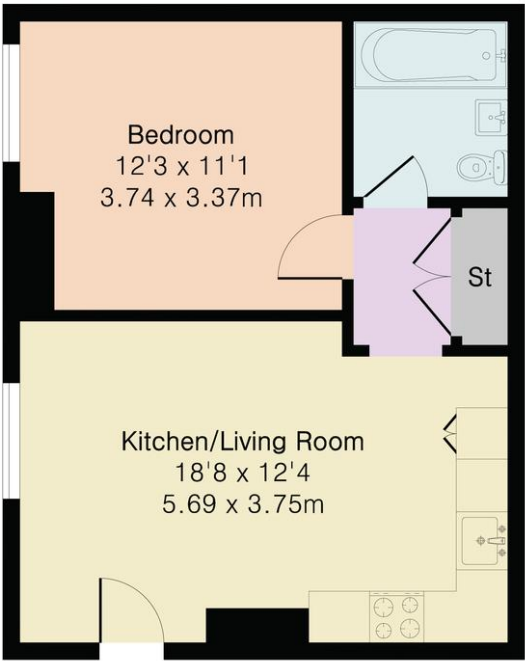
Ground Rent - approximately £258

Service Charge - approximately £1920 for 2026

Council Tax Band A



Approximate Gross Internal Area 444 sq ft - 41 sq m



Floor plan produced in accordance with RICS Property Measurement 2nd Edition. Although Pink Plan Ltd ensures the highest level of accuracy, measurements of doors, windows and rooms are approximate and no responsibility is taken for error, omission or misstatement. These plans are for representation purposes only and no guarantee is given on the total square footage of the property within this plan. The figure icon is for initial guidance only and should not be relied on as a basis of valuation.



Our note. For clarification we have prepared these sales particulars as a general guide and have not carried out a detailed survey nor tested the services, appliances or fittings. Room sizes should not be relied upon for carpets or furnishings. If there are any important matters which are likely to affect your decision to buy, please contact us before viewing this property. These particulars, whilst believed to be accurate, are set out as a general outline only for guidance and do not constitute any part of an offer or contract. Intending purchasers should not rely on them as statements of representation of fact, but must satisfy themselves by inspection or otherwise as to their accuracy. No person in the employment of Complete Property Services has the authority to make or give any representation or warranty in respect of the property.

SKETCH PLAN FOR ILLUSTRATIVE PURPOSES ONLY. All measurements and sizes and locations of walls, doors, window fittings and appliances are shown conventionally and are approximate only and cannot be regarded as being a representation either by the Seller or his Agent. We hope that these plans will assist you by providing you with a general impression of the layout of the accommodation. The plans are not to scale nor accurate in detail. © Unauthorised reproduction prohibited.

As part of the service we offer we may recommend ancillary services to you which we believe will help with your property transaction. We wish to make you aware that should you decide to proceed we will receive a referral fee. This could be a fee, commission, payment or other reward. We will not refer your details unless you have provided consent for us to do so. You are not under any obligation to provide us with your consent or to use any of these services, but where you do you should be aware of the following referral fee information. You are also free to choose an alternative provider. To find out more about this, please speak to a member of the team.





Need a more complete
picture? Get in touch with
your local branch...

Tel 01392 422500
Email exeter@completeproperty.co.uk
Web completeproperty.co.uk

Complete
141 Younghayes Rd
Cranbrook
EX5 7DR

Are you selling a property too? Call us to get a set of property details like these...

selling

letting

land &
new homes

signature
homes

complete.