

Davidson



7 HIGHFIELD ROAD
BIRMINGHAM, B15 3EH

£950 PCM

BLOOMSBURY HOUSE | One Bed, One Bath | Located in the highly sought after Highfield Gardens II | Fully Furnished | Allocated Parking | Communal Gardens | Gas Central Heating | Available 20th February 2026
Council Tax Band: B EPC: B



BLOOMSBURY HOUSE | 1 Bed, 1 Bath Apartment | Fully Furnished | Allocated

Parking | Communal Gardens

BLOOMSBURY HOUSE

Davidson Estates are delighted to present this apartment located in the highly sought after Highfield Gardens II development in B15 Edgbaston.

This immaculately appointed apartment located on the ground floor and comprises of an entrance hallway with storage, a magnificent open-plan living area with fully integrated kitchen; a large double bedroom with built in wardrobe storage and a family bathroom with a power shower over the bath tub.

The property is very bright and airy throughout and benefits from gas central heating and UPVC double glazing throughout.

An allocated parking space is included with the apartment and the development itself is gated.

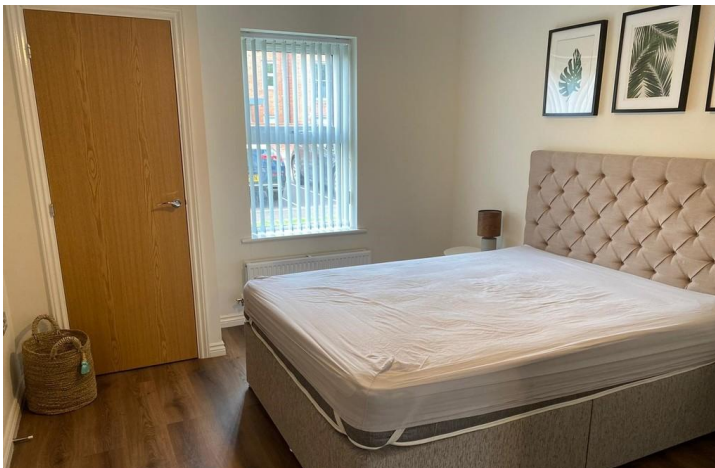
Situated within the highly regarded Calthorpe Estate, the property is just a 5 minute walk away from popular bars and restaurants such as The Edgbaston Boutique Hotel & Cocktail Lounge, The Highfield pub, Physician and the Michelin starred Simpsons restaurant.

There are excellent sporting facilities nearby, including the

recently-refurbished Warwickshire County Cricket Club, The Priory Tennis Club with international standard facilities, the Edgbaston Golf Club with a par-69 course laid out by the legendary H S Colt and the newly opened state-of-the-art, 55 million University of Birmingham Sport & Fitness club.

Council Tax Band: B

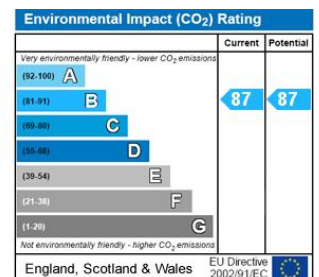
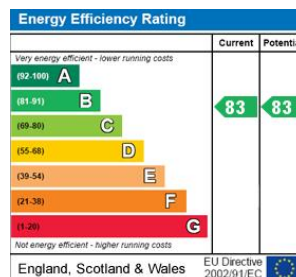
EPC: B



Fantastic Location in Edgbaston | Short distance to Birmingham City Centre | Open

Plan Living Area | Gas Central Heating | Available 20th February 2026





Davidson

OFFICE
22 Harborne Road
Birmingham
West Midlands

0121 455 7727
info@davidsonstates.co.uk
www.davidsonstates.co.uk

Agents Note: Whilst every care has been taken to prepare these particulars, they are for guidance purposes only. All measurements are approximate and are for general guidance purposes only and whilst every care has been taken to ensure their accuracy, they should not be relied upon and potential buyers/tenants are advised to recheck the measurements