



**25 Richmond Place, Tunbridge Wells – TN2 5JZ**  
Tunbridge Wells

Guide Price £950,000 – £975,000

**bracketts**  
est. 1828





Offered for sale is this most desirable regency style three bedroom semi detached family home. Located in a highly desirable development close to central Tunbridge Wells, situated just off from the coveted Warwick Park. The house has been stylishly modernised and decorated throughout arranged over three floors.

Internally comprising, generous entrance hall on the ground floor, cloakroom WC, storage room and utility room with internal access to the garage which could easily serve as a further reception bedroom subject to necessary planning consents.

To the first floor is a large 'L' shape sitting room with access to a balcony. Open plan modern kitchen / dining / breakfast room with quartz worksurfaces over, Neff appliances, underfloor heating & bi folding doors leading out to the rear garden, which is a truly beautiful space.

Further stairs lead to the second-floor landing and the master bedroom which has its own ensuite bathroom and fitted wardrobes. There are two further bedrooms on this floor, also with fitted wardrobes, and a well-appointed bathroom.



Externally there is a beautifully landscaped tropical inspired garden, three separate seating areas have been created with oak sleepers well stocked and mature flower beds, palm trees and shrubs. Additionally there is a integral garage and driveway to the front.

Richmond Place is situated off from Warwick Park, and consists of a range of attractive dwellings built in 2000. There is a real community feel to the road, and the communal areas, which include a woodland for the residents to enjoy, are beautifully maintained.







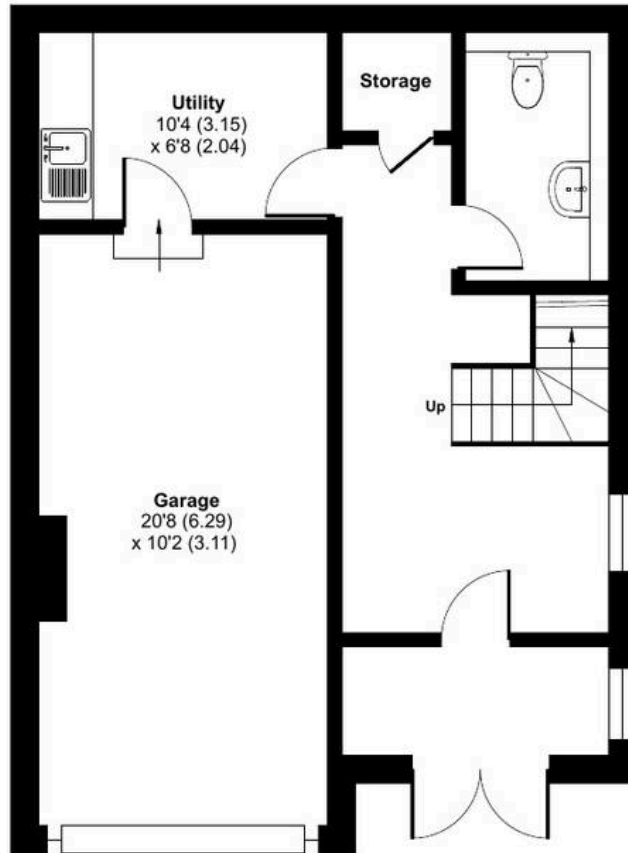
# Richmond Place, Tunbridge Wells, TN2

Approximate Area = 1419 sq ft / 131.8 sq m

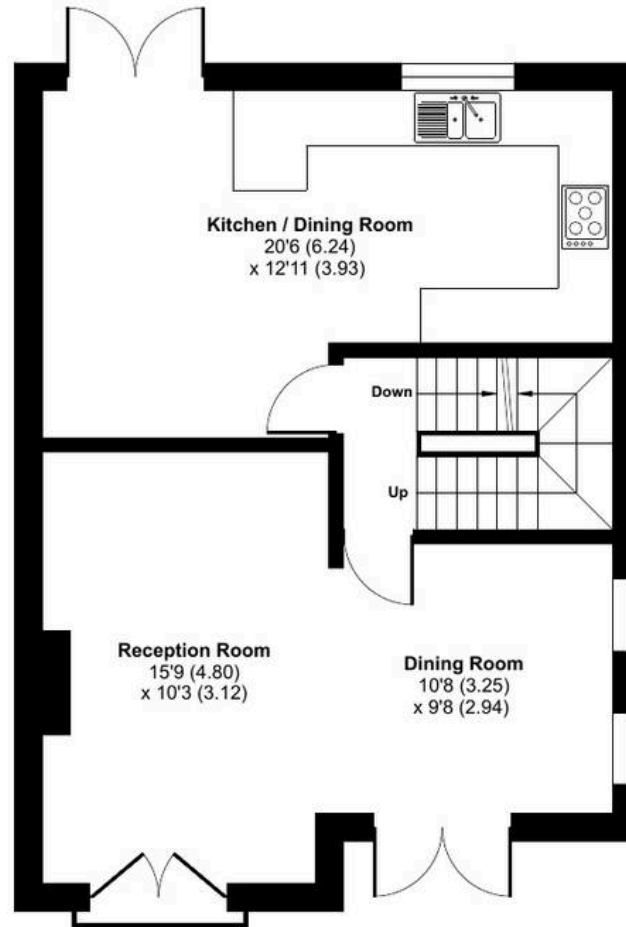
Garage = 218 sq ft / 20.2 sq m

Total = 1637 sq ft / 152 sq m

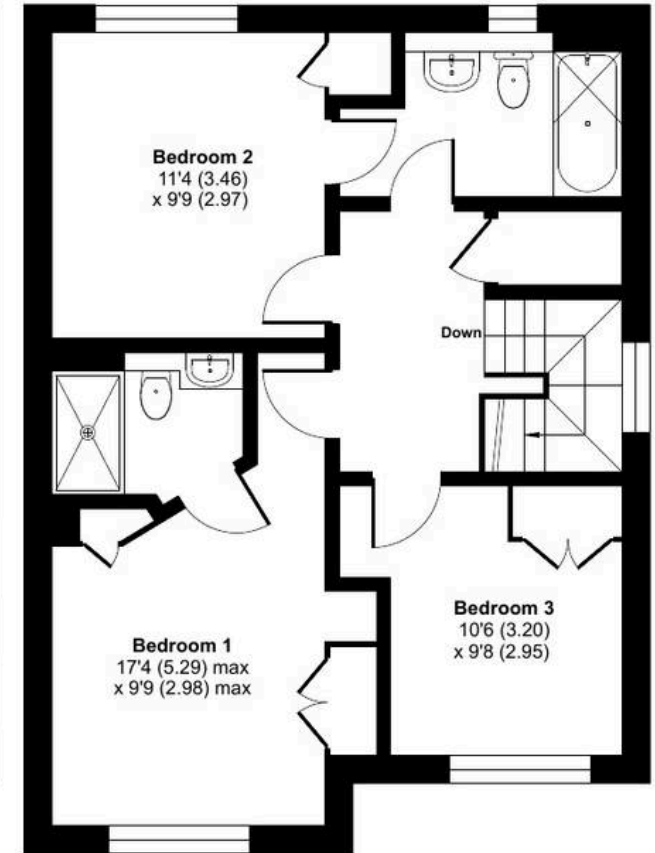
For identification only - Not to scale



GROUND FLOOR



FIRST FLOOR



SECOND FLOOR

