



## A DETACHED FOUR BEDROOM, SIX BATHROOM CHARACTER PROPERTY

Uxbridge Road, Harrow, HA3 6TR

**ROBSONS**

WEST DRIVE  
WEST DRIVE GDNS  
LAKELAND CLOSE



Uxbridge Road, Harrow, HA3 6TR

**ENTRANCE HALL • TWO RECEPTION ROOMS •  
LARGE KITCHEN / DINER • FOUR BEDROOMS  
WITH EN-SUITES • LUXURY FAMILY  
BATHROOM • GROUND FLOOR SHOWER  
ROOM • GARDEN • OFF-STREET PARKING &  
GARAGE TO REAR**

### Description

A four-bedroom, six-bathroom detached character property, offering a total of 2,275 sq.ft., with a garage and off-street parking at the rear. The property is situated a short distance from Hatch End High Street, with an alternative choice of high streets close by, as well as great transport links and schools.

The ground floor comprises a welcoming entrance hall with stairs to the first floor. There are two reception rooms, with the largest of the two benefiting from access to the garden, and an impressive kitchen / diner with an adjoining utility room. The kitchen features a range of modern units with ample storage, whilst the utility room also offers additional worktop space and storage. Furthermore, there is a ground floor shower room with a WC.







Four double bedrooms are located on the first floor, all with en-suite shower rooms, along with a luxury family bathroom. There is a good-sized garden that is mainly laid to lawn, with a garage and off-street parking at the rear of the property.

### Location

The property is situated on Uxbridge Road, a short distance from Hatch End, with easy access to a choice of alternative high streets. For commuters, the Overground services are available at Hatch End and Headstone Lane Stations, with Harrow and Wealdstone Station providing the Overground as well as the Bakerloo Line. Local bus routes are also easily accessible.

The area is well served by primary and secondary schooling, children's parks/playgrounds, and recreational facilities.

### Additional Information

Tenure: Freehold

Local Authority: London Borough of Harrow

Council Tax Band: G

Energy Efficiency Rating: TBC

For additional information, please refer to [www.robsonswb.com](http://www.robsonswb.com) or call us on: 020 8866 8083.



Approximate Gross Internal Area  
 Ground Floor = 114.2 sq m / 1,229 sq ft  
 First Floor = 77.9 sq m / 838 sq ft  
 Garage & External Cupboard = 19.3 sq m / 208 sq ft  
 Total = 211.4 sq m / 2,275 sq ft

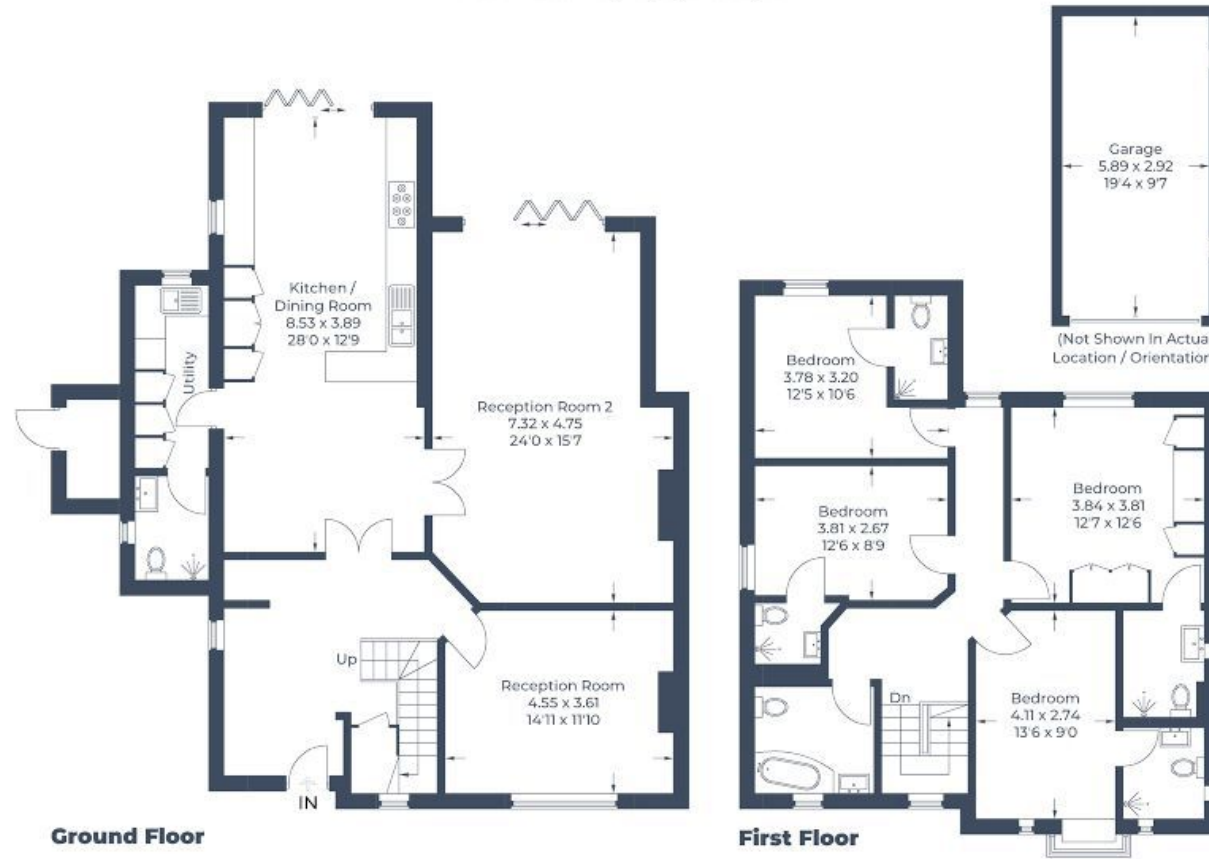


Illustration for identification purposes only,  
 measurements are approximate, not to scale.  
 © CJ Property Marketing Produced for Robsons

**ROBSONS**

1 High Street, Pinner HA5 5PJ  
 Tel: 020 8866 8083 Email: [pinner@robsonswb.com](mailto:pinner@robsonswb.com)  
[www.robsonswb.com](http://www.robsonswb.com)

SCAN TO VISIT



OUR WEBSITE

Important notice: Robsons, their clients and any joint agents give notice that 1: They are not authorised to make or give any representations or warranties in relation to the property either here or elsewhere, either on their own behalf or on behalf of their client or otherwise. They assume no responsibility for any statement that may be made in these particulars. These particulars do not form part of any offer or contract and must not be relied upon as statements or representations of fact. 2: Any areas, measurements or distances are approximate. Plot sizes and dimensions are taken from Promap and are approximate. The text, photographs and plans are for guidance only and are not necessarily comprehensive. It should not be assumed that the property has all necessary planning, building regulation or other consents and Robsons have not tested any services, equipment or facilities. Purchasers must satisfy themselves by inspection or otherwise.