

28 Holbrook Road, London – E15 3EA

£450,000 Freehold

Two-bedroom Victorian terrace • In need of refurbishment throughout – excellent project • Classic Victorian proportions and layout • Two reception rooms • Great potential to extend into the loft (STPP) • Scope for a rear/side return extension (STPP) • Private rear garden – blank canvas • Ideal for investors, renovators or owner-occupiers looking to add value



**HIGHCASTLE
ESTATES**

020 3026 4420
sales@hceuk.com

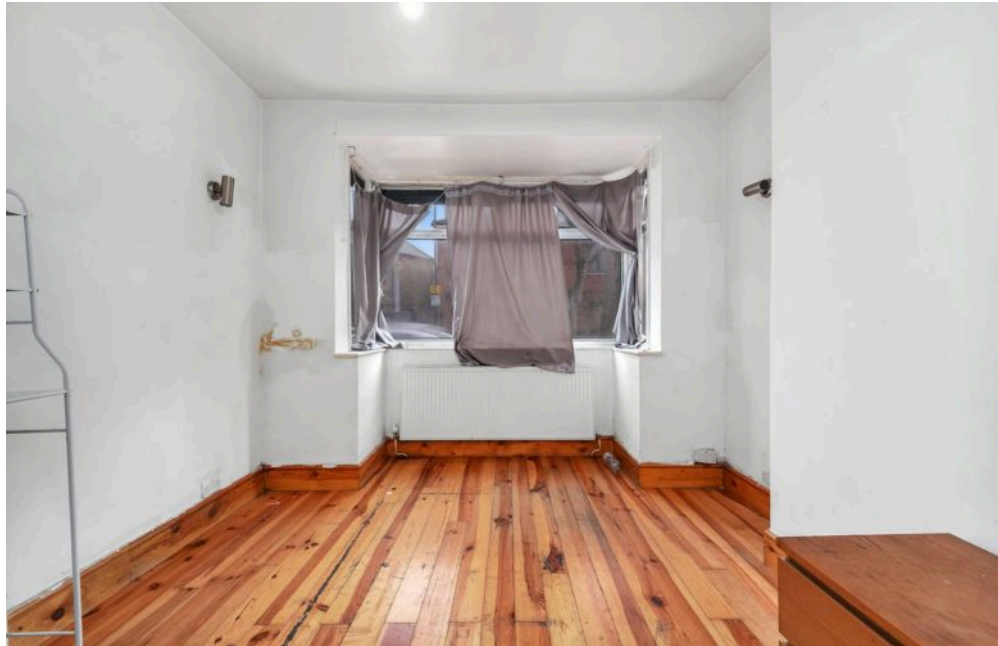
GUIDE PRICE £450,000 to £475,000 Two-bedroom Victorian terrace in Stratford E15, needing full renovation. Classic layout, two receptions, garden, loft and rear extension potential (STPP). Close to transport and schools. Freehold.

Council Tax band: TBD

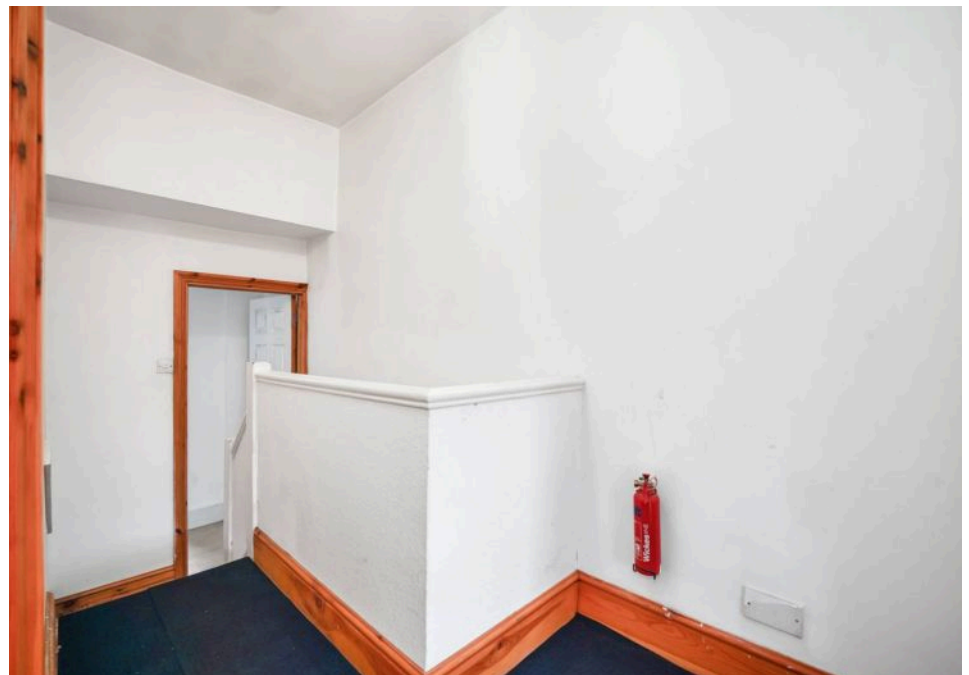
Tenure: Freehold

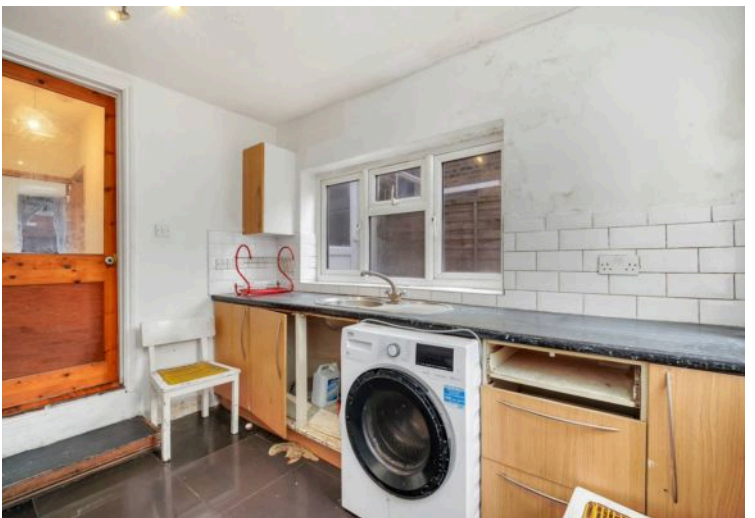
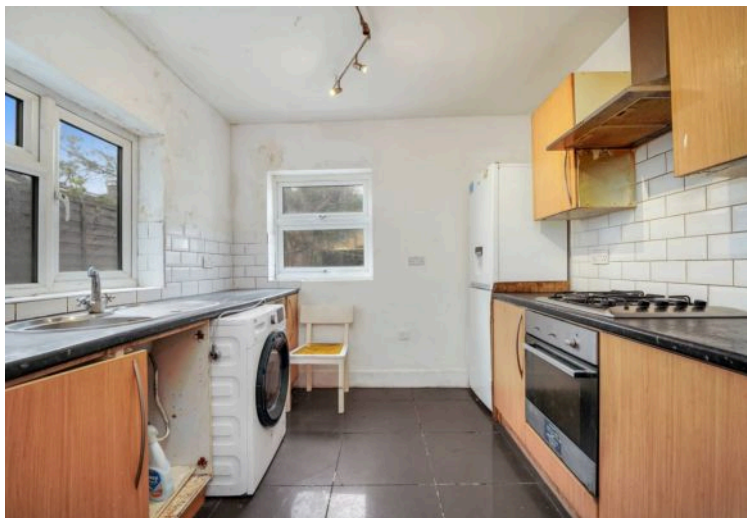
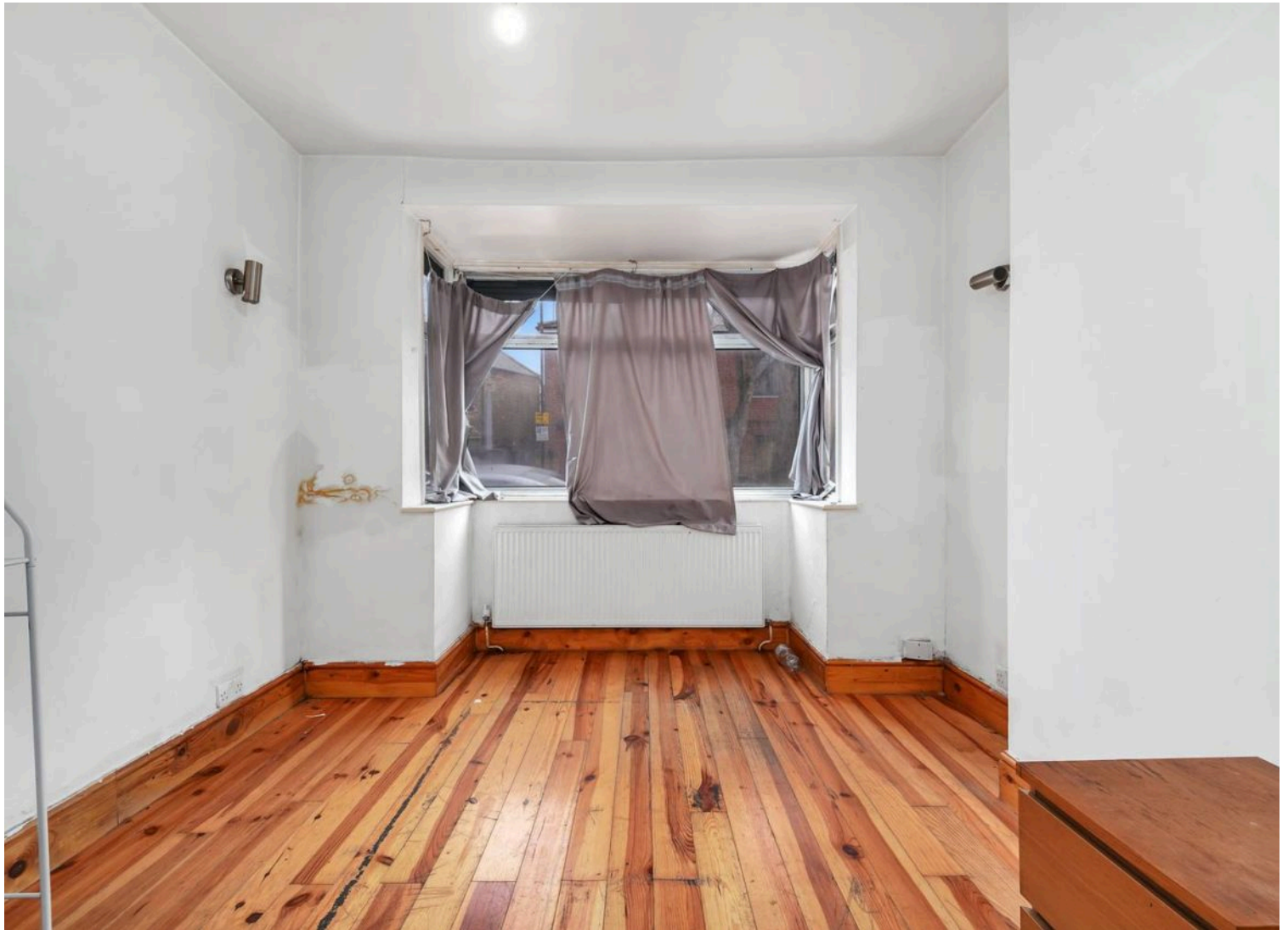
EPC Energy Efficiency Rating: D

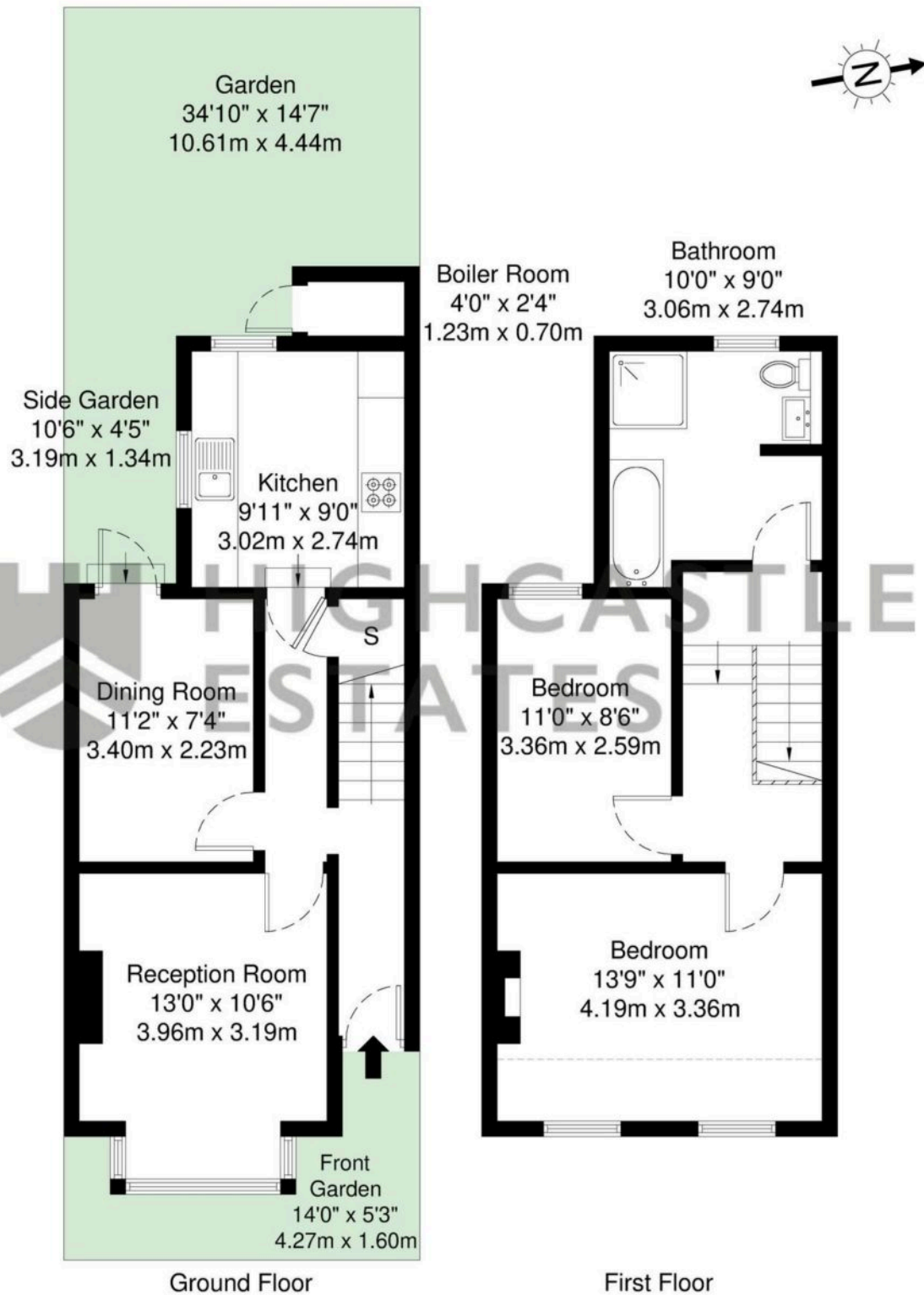
EPC Environmental Impact Rating: D



- Two-bedroom Victorian terrace
- In need of refurbishment throughout – excellent project
- Classic Victorian proportions and layout
- Two reception rooms
- Great potential to extend into the loft (STPP)
- Scope for a rear/side return extension (STPP)
- Private rear garden – blank canvas
- Ideal for investors, renovators or owner-occupiers looking to add value







GROSS INTERNAL AREA (GIA)
The footprint of the property
72.5 sq m / 780 sq ft

TOTAL STORAGE SPACE
Storage and wardrobe total area
0.7 sq m / 7 sq ft

EXTERNAL FEATURES
Garden, Balcony, Terrace, Verandah etc.
53.9 sq m / 580 sq ft

RESTRICTED HEAD HEIGHT
Limited use area under 1.5m
3.3 sq m / 35 sq ft

Disclaimer : Floorplan measurements are approximate and are for illustrative purposes only.
While we do not doubt the floorplan accuracy and completeness, you or your advisors should
conduct a careful, independent investigation of the property in respect of monetary valuation.

**Maison
VUE**

You can include any text here. The text can be modified upon generating your brochure.