



**5 Carlton Road.**  
Redhill

Offers Over **£1,000,000**  
 **halliwell  
marks**

This impressive four/five bedroom detached house presents a rare opportunity to acquire a beautiful double fronted mock Tudor family home, situated on a highly sought-after road renowned for its proximity to outstanding local schools. The property effortlessly blends character and charm with practicality, featuring original details such as a working maids bell that add a touch of period elegance throughout. Inside, the spacious accommodation includes four generously sized double bedrooms, two of which benefit from contemporary en-suite facilities, ensuring comfort and privacy for family members or guests. The ground floor offers two large reception rooms, ideal for both formal entertaining and relaxed family living, complemented by a bright and airy conservatory that provides a versatile space for year-round enjoyment. The lovely kitchen breakfast room is thoughtfully designed to cater to modern family needs, offering ample workspace for cooking and casual dining, while a separate utility room provides additional convenience. Two cloakroom/wc's are also available on the ground floor, enhancing the home's functionality. Further benefits include a single garage and ample parking via a carriage driveway, making this an ideal choice for families with multiple vehicles or those who enjoy hosting visitors. The property's location places it within catchment for some of the area's most highly regarded schools, making it perfect for families seeking quality education options. From its handsome mock Tudor facade to its well-proportioned, light-filled interiors, this home is brimming with character and offers a flexible layout to suit a variety of lifestyles. Early viewing is highly recommended to fully appreciate the quality and appeal of this exceptional family residence.

Council Tax band: G

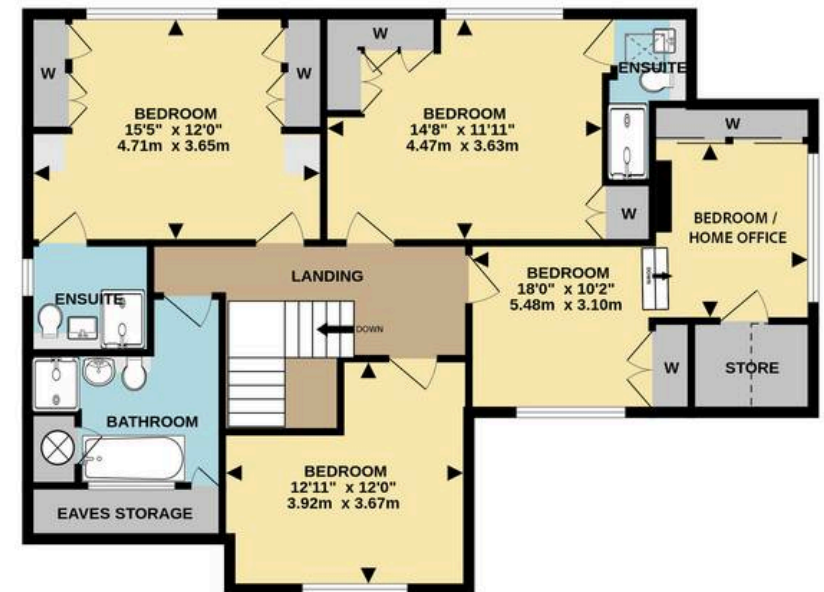
Tenure: Freehold







GROUND FLOOR  
1337 sq.ft. (124.3 sq.m.) approx.



1ST FLOOR  
1006 sq.ft. (93.4 sq.m.) approx.

CARLTON ROAD MAIN HOUSE 203 SQ.M (2193 SQ.FT) GARAGE 14.7 SQ.M (150 SQ.FT)

TOTAL FLOOR AREA : 2343 sq.ft. (217.7 sq.m.) approx.

Measurements are approximate. Not to scale. Illustrative purposes only

