



## A THREE BEDROOM MAISONETTE IN THE HEART OF NORTHWOOD

Hallowell Road, Northwood, Middlesex, HA6 1DR

**ROBSONS**



Hallowell Road, Northwood, Middlesex, HA6 1DR

**THREE BEDROOMS • SPACIOUS  
LIVING/DINING ROOM • MODERN KITCHEN •  
FAMILY BATHROOM • GREAT CONDITION  
THROUGHOUT • OFF-STREET PARKING •  
SHORT WALK TO NORTHWOOD TOWN AND  
STATION**

### Description

This three bedroom, one bathroom maisonette is situated in the heart of Northwood, moments from the high street shops and station. Boasting over 1,300 sqft of spacious accommodation set on the first and second floors of this attractive period property.

Upon entering, stairs lead up to the first floor where you are welcomed by a generous living/dining room and open-plan kitchen. There is also the family bathroom and the main bedroom.

The second floor comprises two further double bedrooms.

The maisonette also benefits from off-street parking to the front for multiple vehicles.







Northwood provides a range of shopping facilities including Waitrose supermarket, a variety of restaurants and other amenities with the Metropolitan Line station providing access to Baker Street and the City. There is a plethora of state and private schooling together with a wide choice of recreational facilities, which include golf courses and fitness centres. The M1, M40 and M25 motorways are also accessible.

NB this property is situated within the proximity of the ULEZ, if your vehicle does not comply charges may apply.

### **Additional Information**

Tenure: Leasehold

Lease Length: 125 years from 2005

Service Charge: circa £600 p/a

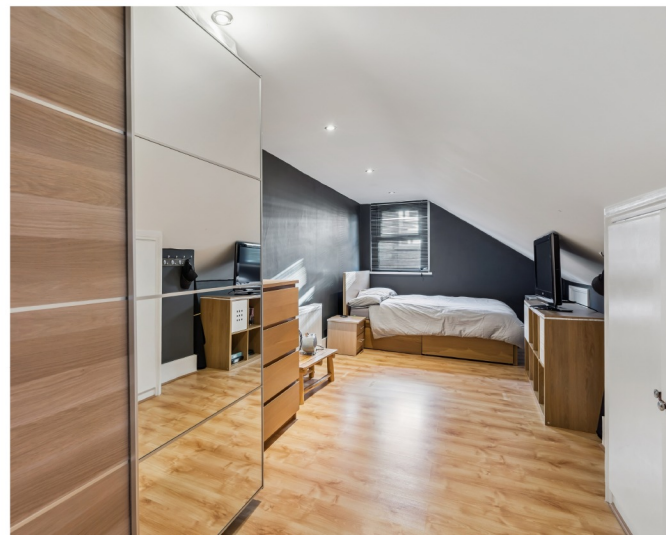
Ground Rent: £10 p/a

Local Authority: London Borough of Hillingdon

Council Tax Band: D


Energy Efficiency Rating: C

For additional information, please refer to [www.robsonswb.com](http://www.robsonswb.com) or call us on: 01923 835355.



Approximate Gross Internal Area  
 Lower Ground Floor = 2.6 sq m / 28 sq ft  
 Ground Floor = 69.3 sq m / 746 sq ft  
 First Floor = 49.1 sq m / 528 sq ft  
 Total = 121 sq m / 1,302 sq ft



 = Reduced headroom below 1.5m / 5'0

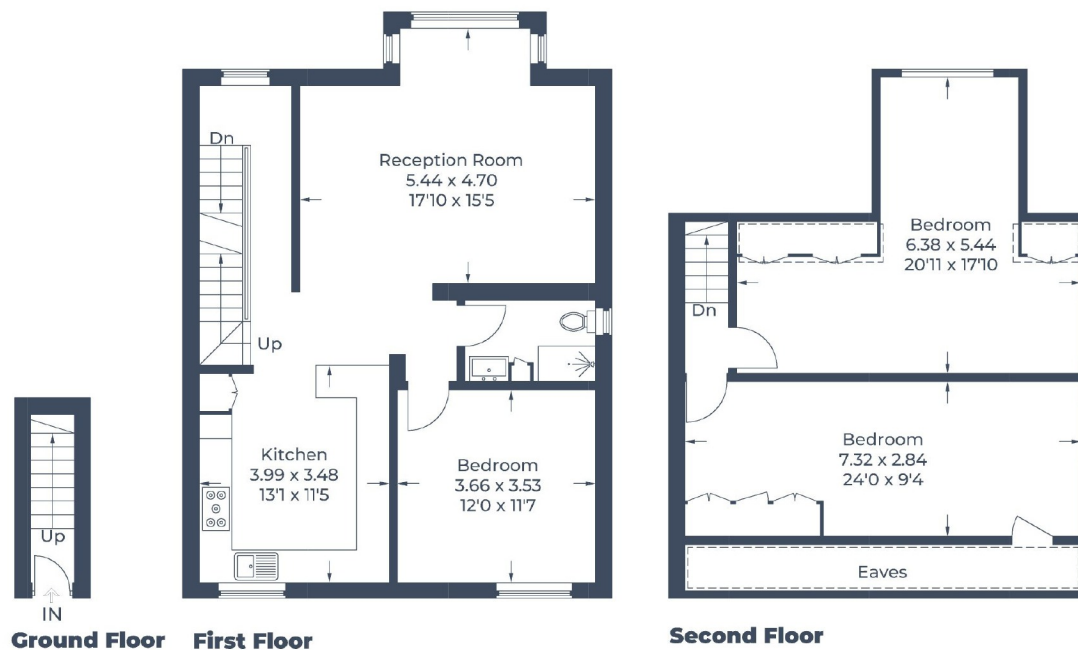


Illustration for identification purposes only,  
 measurements are approximate, not to scale.  
 © CJ Property Marketing Produced for Robsons

**ROBSONS**

7 Clive Parade, Northwood, HA6 2QF  
 Tel: 01923 835355 Email: northwood@robsonswb.com  
[www.robsonswb.com](http://www.robsonswb.com)

SCAN TO VISIT



OUR WEBSITE

Important notice: Robsons, their clients and any joint agents give notice that 1: They are not authorised to make or give any representations or warranties in relation to the property either here or elsewhere, either on their own behalf or on behalf of their client or otherwise. They assume no responsibility for any statement that may be made in these particulars. These particulars do not form part of any offer or contract and must not be relied upon as statements or representations of fact. 2: Any areas, measurements or distances are approximate. Plot sizes and dimensions are taken from Promap and are approximate. The text, photographs and plans are for guidance only and are not necessarily comprehensive. It should not be assumed that the property has all necessary planning, building regulation or other consents and Robsons have not tested any services, equipment or facilities. Purchasers must satisfy themselves by inspection or otherwise.