



1 Martel View, Le Mont De La Rocque, St. Brelade
£6,000 pcm

BROADLANDS

FINDING YOU A HOME SINCE 1972

1 Martel View, Le Mont De La Rocque

St. Brelade

- 3 bedroom, 3 bathroom, bright and spacious townhouse overlooking St Aubin
- Large balconies with panoramic sea views across the St. Aubin's bay
- Open plan living area and kitchen
- Walking distance from St Aubin's village with great access to St. Helier and the airport
- Kept in immaculate condition
- Pets negotiable
- Unfurnished
- 1 single garage & parking for 2 cars
- Entitled/Licensed housing qualifications required
- Please contact the rentals team on rentals@broadlandsjersey.com



1 Martel View, Le Mont De La Rocque

St. Brelade

An exceptional opportunity to lease a stunning coastal townhouse in the highly sought-after location of St. Aubin. This beautifully presented 3-bedroom, 3-bathroom residence enjoys uninterrupted panoramic views across St. Aubin's Bay, offering an enviable lifestyle by the sea. The property is flooded with natural light creating an inviting and open atmosphere as it boasts an open plan living style and multiple balconies panning over 3 floors. Each of the 3 generous bedroom suites benefits from its own luxurious ensuite bathroom and folding doors opening onto private balconies, all with spectacular sea views.

Immaculately maintained throughout, the townhouse further offers the convenience of a single garage and additional parking for two vehicles. Perfectly positioned, the property is just a short stroll along St. Aubin's cobbled high street to the village's renowned restaurants, cafés, and promenade, while also enjoying excellent access to St. Helier and the airport.

Available for immediate occupation, this exceptional home is open to entitled or licensed applicants and is offered on a 2-3 year lease. Exclusively marketed by Broadlands as sole agent.

For further details or to arrange a viewing, please contact: rentals@broadlandsjersey.com



1 Martel View, Le Mont De La Rocque

St. Brelade

Living

Generously sized, fully fitted kitchen and open-plan living area, with direct access to a large balcony that provides plenty of natural light and an inviting, open atmosphere.

Sleeping

3 spacious bedroom suites, each with its own ensuite bathroom and folding doors opening onto private balconies, all with spectacular sea views. The primary suite also boasts a dressing area and fitted wardrobes.

Outside

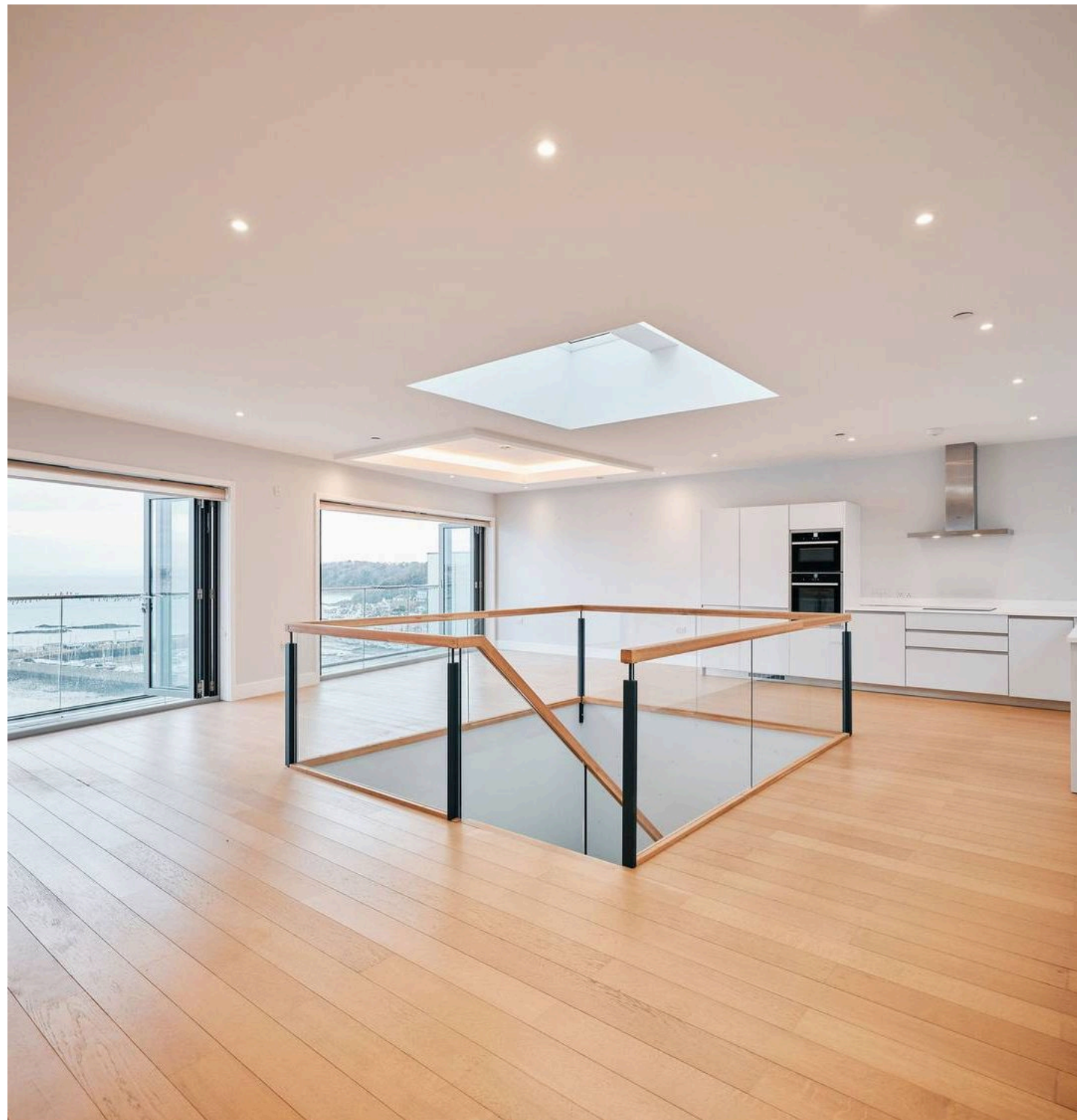
Large balconies with panoramic sea views across St. Aubin's bay.

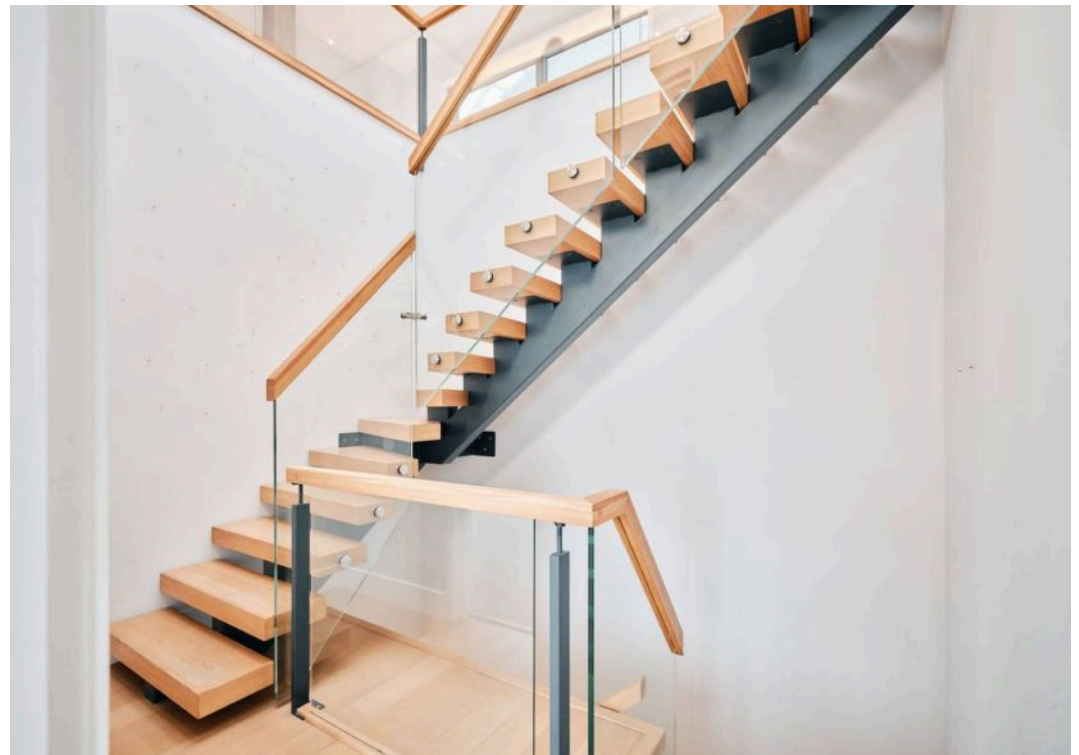
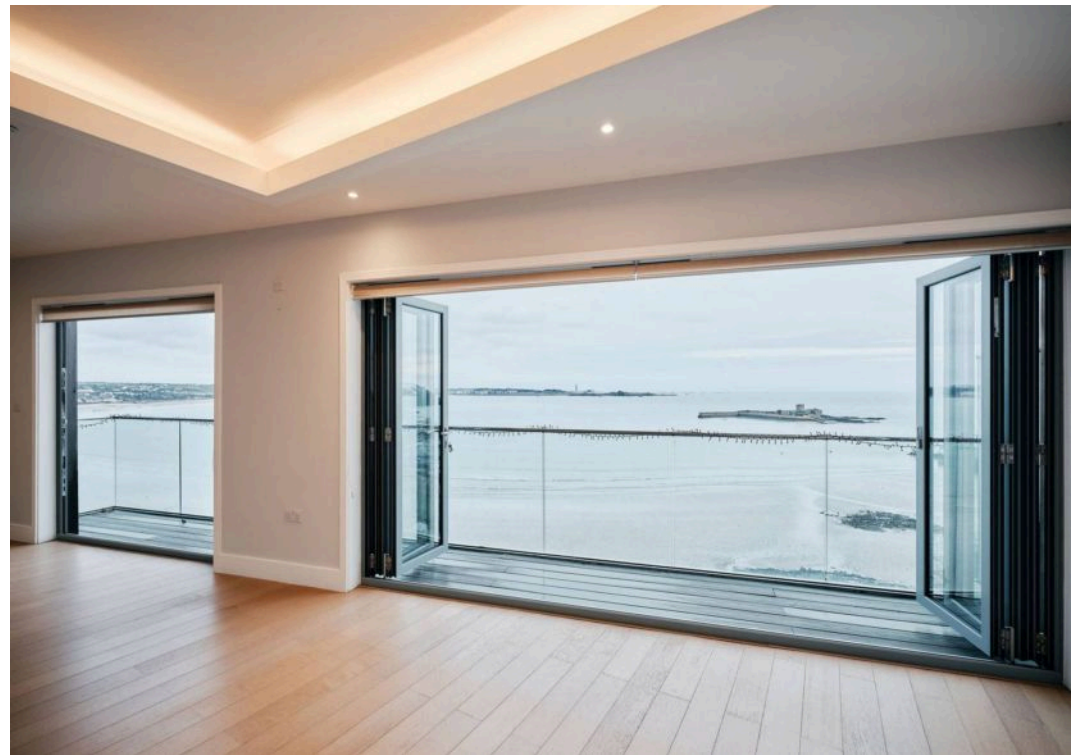
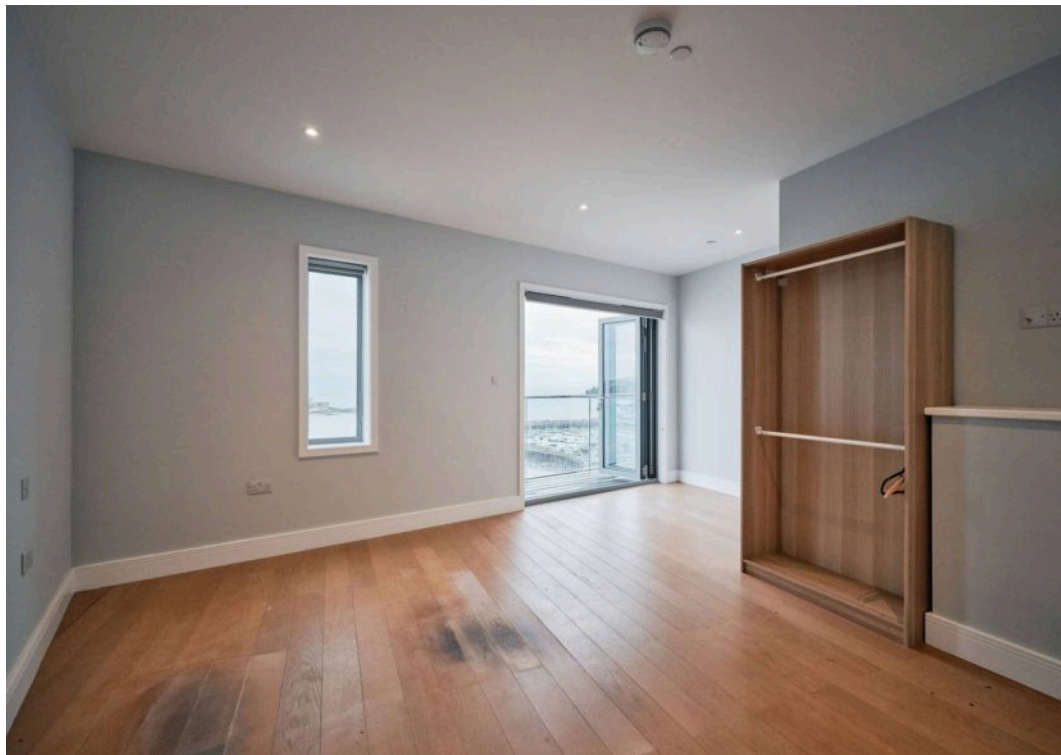
1 single garage & parking for 2 cars.

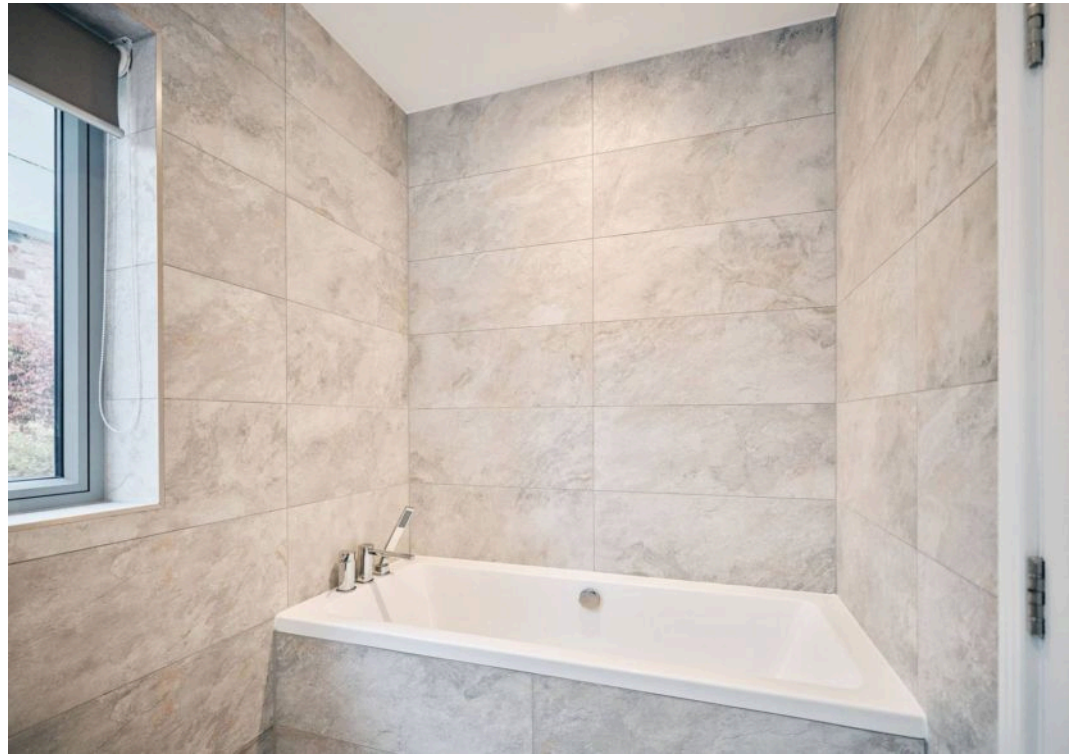
Services

All mains except gas.

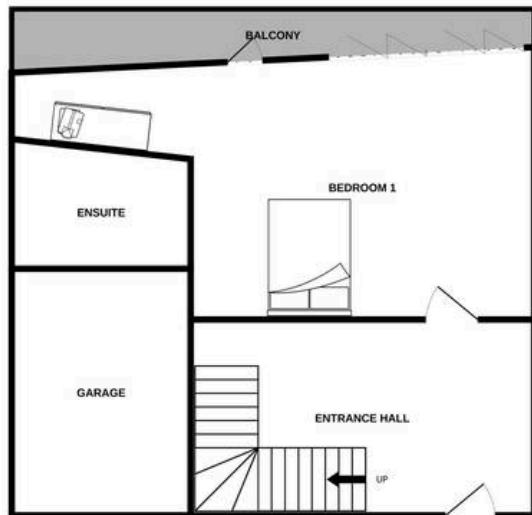
Electric heating.



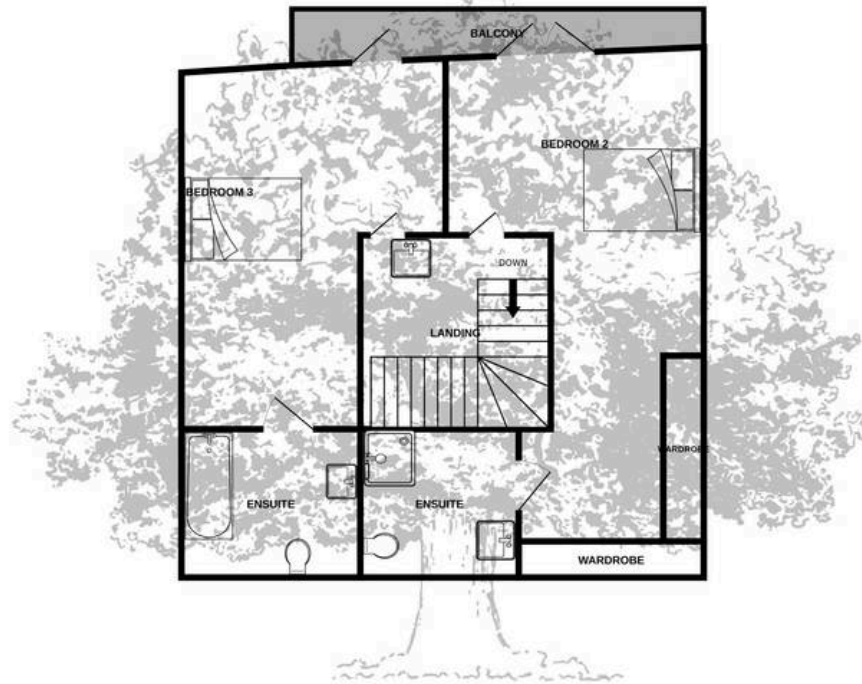




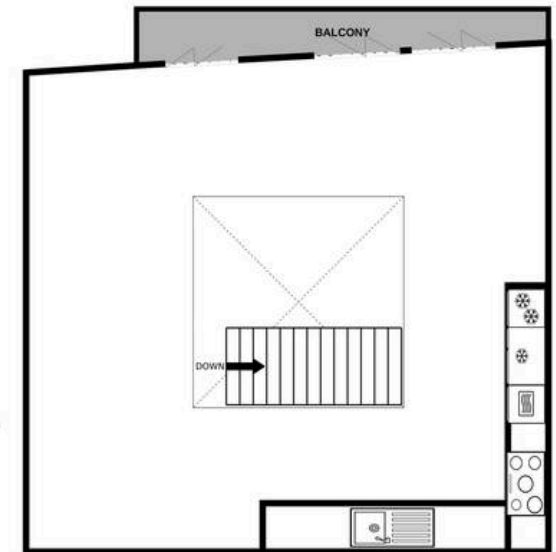
GROUND FLOOR
576 sq.ft. (53.5 sq.m.) approx.



1ST FLOOR
855 sq.ft. (79.4 sq.m.) approx.



2ND FLOOR
861 sq.ft. (80.0 sq.m.) approx.



TOTAL FLOOR AREA : 2292 sq.ft. (212.9 sq.m.) approx.

Whilst every attempt has been made to ensure the accuracy of the floorplan contained here, measurements of doors, windows, rooms and any other items are approximate and no responsibility is taken for any error, omission or mis-statement. This plan is for illustrative purposes only and should be used as such by any prospective purchaser. The services, systems and appliances shown have not been tested and no guarantee as to their operability or efficiency can be given.

Made with Metropix ©2026



Broadlands

Broadlands Estates, Library Place - JE2 3NL

01534 880770 • enquiries@broadlandsjersey.com • www.broadlandsjersey.com/

BROADLANDS

FINDING YOU A HOME SINCE 1972