







This attractive semi-detached home is ideally situated within the popular Cambusnethan area of Wishaw and is presented to the market in true walk-in condition, making it an ideal purchase for a wide range of buyers.

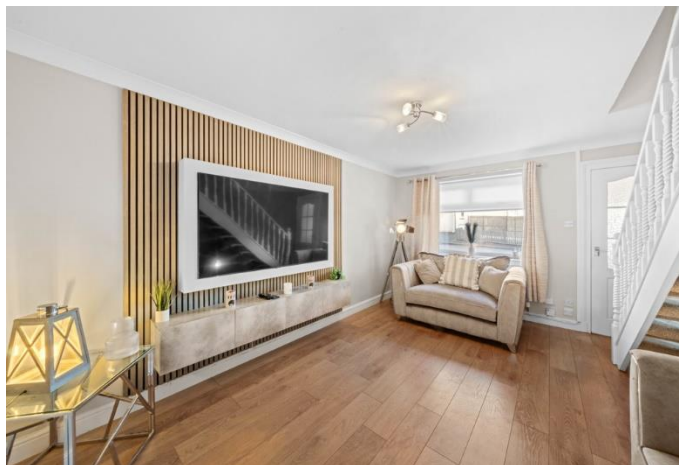
MQ Assisted Move, Part Exchange and 95% mortgages are available.

The accommodation begins with a welcoming entrance vestibule leading into a bright and stylish lounge. The lounge features wooden flooring, light neutral décor and an eye-catching panelled media feature wall, with open access to the staircase leading to the upper level.

To the rear, the well-appointed kitchen is fitted with a range of modern cabinetry and includes an integrated electric hob and oven. There is ample space for freestanding appliances including a dishwasher, washing machine and fridge freezer. A rear door provides direct access to the garden, making this an excellent space for everyday living and entertaining.

Upstairs, the property offers two generously sized double bedrooms, both finished with fitted mirrored wardrobes and comfortable carpeted flooring. Completing the accommodation is a contemporary shower room, comprising a fully enclosed corner shower cubicle, low-flush WC, wash hand basin and a chrome heated towel radiator.

Externally, the front garden is easily maintained with decorative gravel, while to the side there is a large driveway providing off-street parking. The enclosed rear garden features a garage, patio area and a section of lawn, offering a versatile outdoor space.



Wishaw offers an excellent range of local amenities including shops, bars, restaurants and leisure facilities. The property is perfectly positioned for commuters, with the M74 providing convenient access to the Central Belt. Excellent public transport links are also available, with regular train and bus services connecting to surrounding areas. Ideally located within a sought-after area of Wishaw, this home combines comfort, convenience and style.

MQ Estate Agents are open 7 days a week:  
Monday to Friday 8am to 9pm & Saturday & Sunday 8.30am - 9pm to arrange your viewing or valuation appointment.









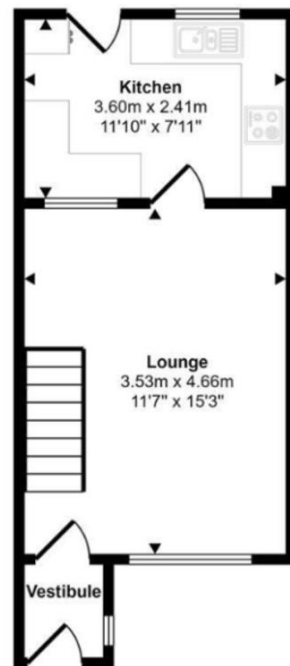




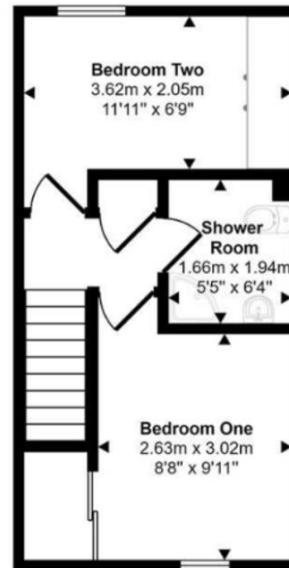




Approx Gross Internal Area  
54 sq m / 579 sq ft

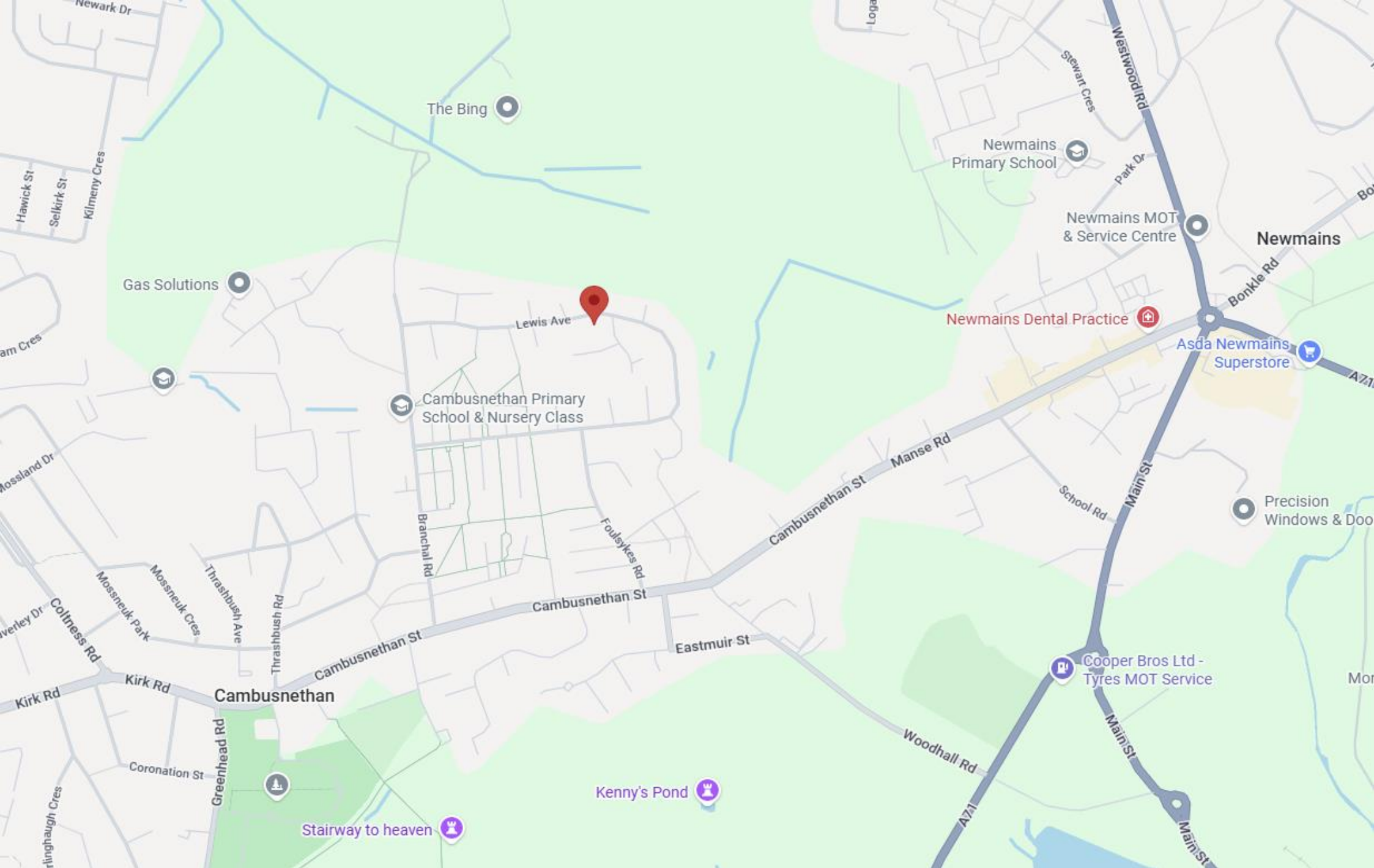


Ground Floor  
Approx 27 sq m / 293 sq ft



First Floor  
Approx 27 sq m / 286 sq ft





Call free on 0800 074 8585

[www.mqestateagents.co.uk](http://www.mqestateagents.co.uk)

We are registered with the Office of Fair Trading and the Property Ombudsman. You can be confident that the service is not only regulated but also fully transparent. Whilst every precaution to ensure accuracy has been taken during the preparation of these particulars, if there is any aspect which is critical to your interest or which you find misleading, please contact us for further information. In accordance with the terms of the Property Misdescriptions Act, we wish to clarify all kitchen appliances or indeed and other mechanical items, apparatus or appliances relating to this property, including the central heating system, has not been inspected or tested and therefore MQ Estate Agents Limited do not warrant either now or at a later date their correct functions. Please note photographs taken with a wide angled lens and all measurements are approximate and are taken with a laser tape measure, therefore MQ Estate Agents Limited cannot guarantee true room sizes and will not be held responsible.