



Biddulph Mansions, Elgin Avenue, Maida Vale W9

London

£1,000,000



Biddulph Mansions, Elgin Avenue

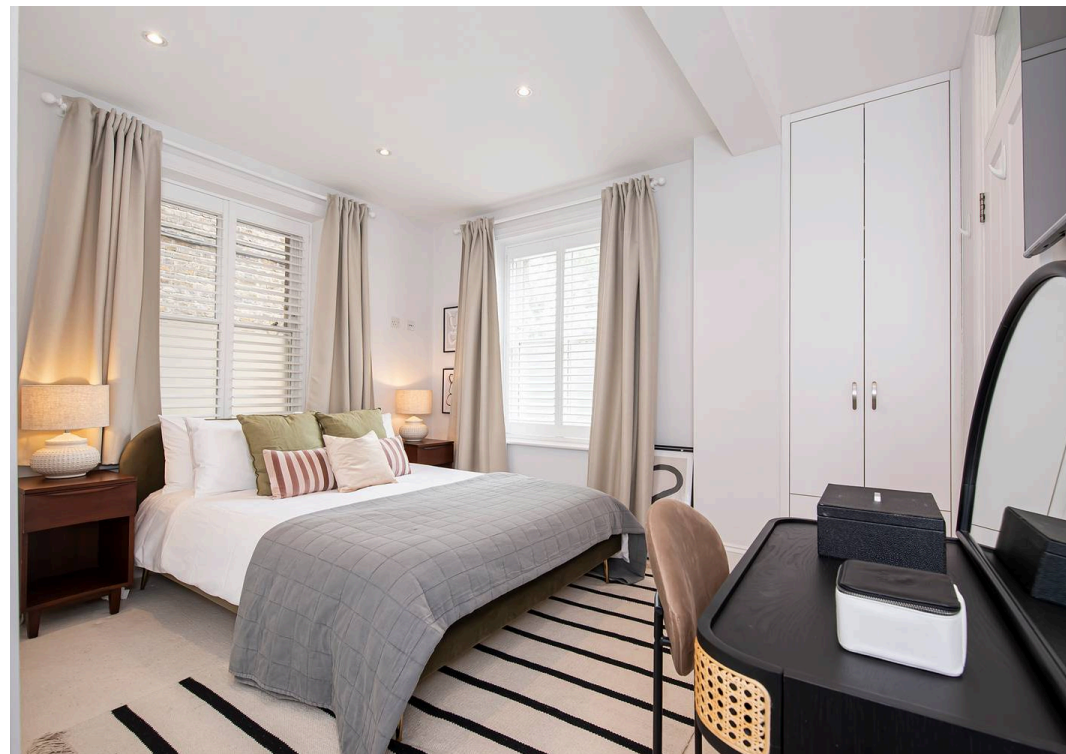
Maida Vale, London W9

Stunning 3 bed / 2 bath with communal garden.
Chain free with 951 years lease.
Council Tax band: B

Tenure: Leasehold

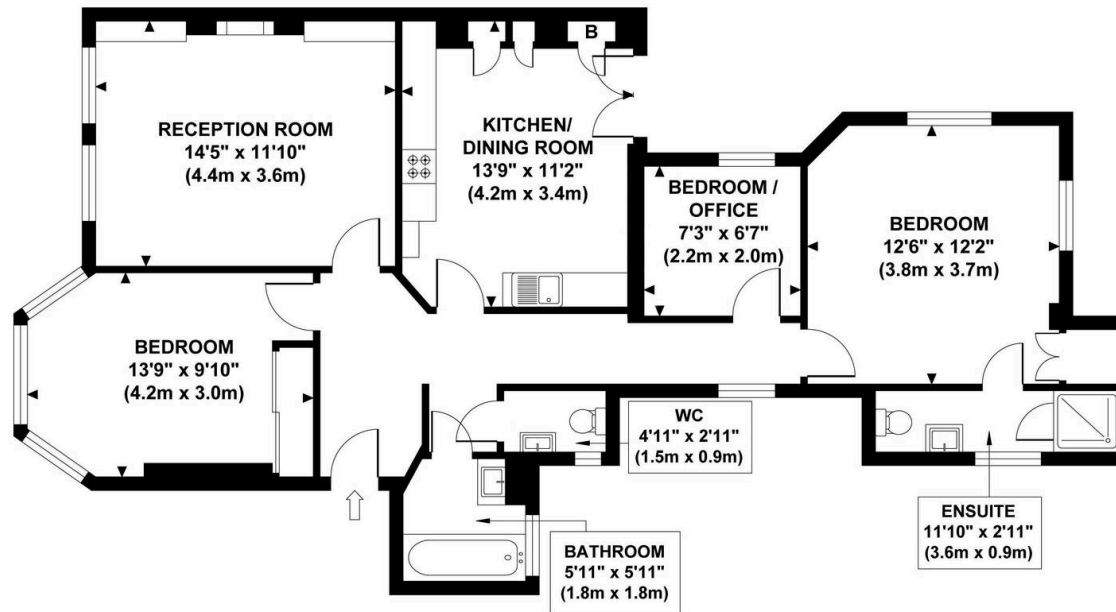
EPC Energy Efficiency Rating: D

EPC Environmental Impact Rating: G



BIDDULPH MANSIONS

Approximate Gross Internal Area
906 sq ft / 84.17 sq m



LOWER GROUND FLOOR GROSS INTERNAL FLOOR AREA 906 SQ FT

Although every attempt has been made to ensure accuracy,
all measurements are approximate and no responsibility is taken for any error, omission, or mid-statement.
This floor plan is for illustrative purposes only and not to scale. Measured in accordance to RICS standards.
GB PRO PHOTOS



Garrison Estates

20 College Parade, Salusbury Road, Queens Park – NW6 6RN

020 4511 4820 • contact@garrisonestates.co.uk • www.garrisonestates.co.uk/