

6 Meadow View Ivy Chimneys

Epping, Essex

Offers Over £650,000

Welcome to Meadow View. Awash with light, this four double bedroom home with gated private parking is completely 'turnkey'. Just a short walk to Epping station and high street, what a gorgeous spot to call home.

Council Tax band: F

Tenure: Freehold

- Four double bedrooms
- Two en-suite shower rooms
- Beautifully presented
- Gated parking
- Garden with rear access
- Walking distance to Epping station & high street
- Close to Ivy Chimneys school
- Air conditioning



Hallway

Kitchen / Diner

8' 4" x 17' 7" (2.55m x 5.35m)

Living Room

16' 9" x 13' 0" (5.11m x 3.97m)

WC

Bedroom

9' 3" x 10' 7" (2.83m x 3.22m)

Ensuite Shower Room

Bedroom

8' 0" x 13' 10" (2.43m x 4.22m)

Bedroom

7' 7" x 9' 9" (2.30m x 2.96m)

Bathroom

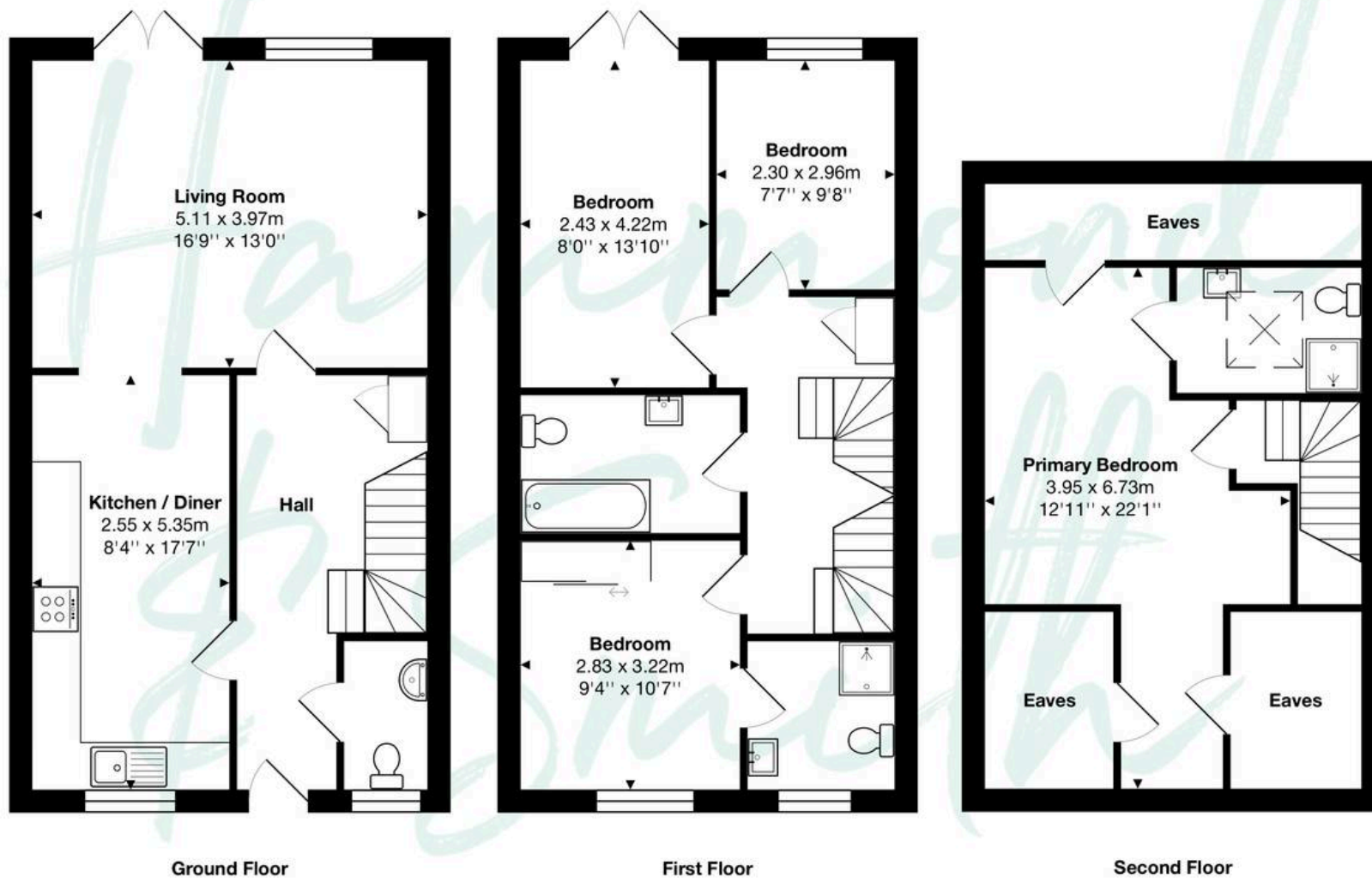
Primary Bedroom

13' 0" x 22' 1" (3.95m x 6.73m)

Ensuite Shower Room







Total Area: approx. 131.7 m² ... 1417 ft²

THE FLOORPLAN IS FOR ILLUSTRATIVE PURPOSES ONLY AND IS NOT TO SCALE.
Measurements and features are approximate and may differ from the actual property. Verify all details independently; no liability is accepted for errors or omissions.

Property marketing provided by www.fotomarketing.co.uk