



20 St. Marys Close, Etchinghill - CT18 8NX

Fixed Price £206,500

Approximate Gross Internal Area = 66 sq m / 710 sq ft

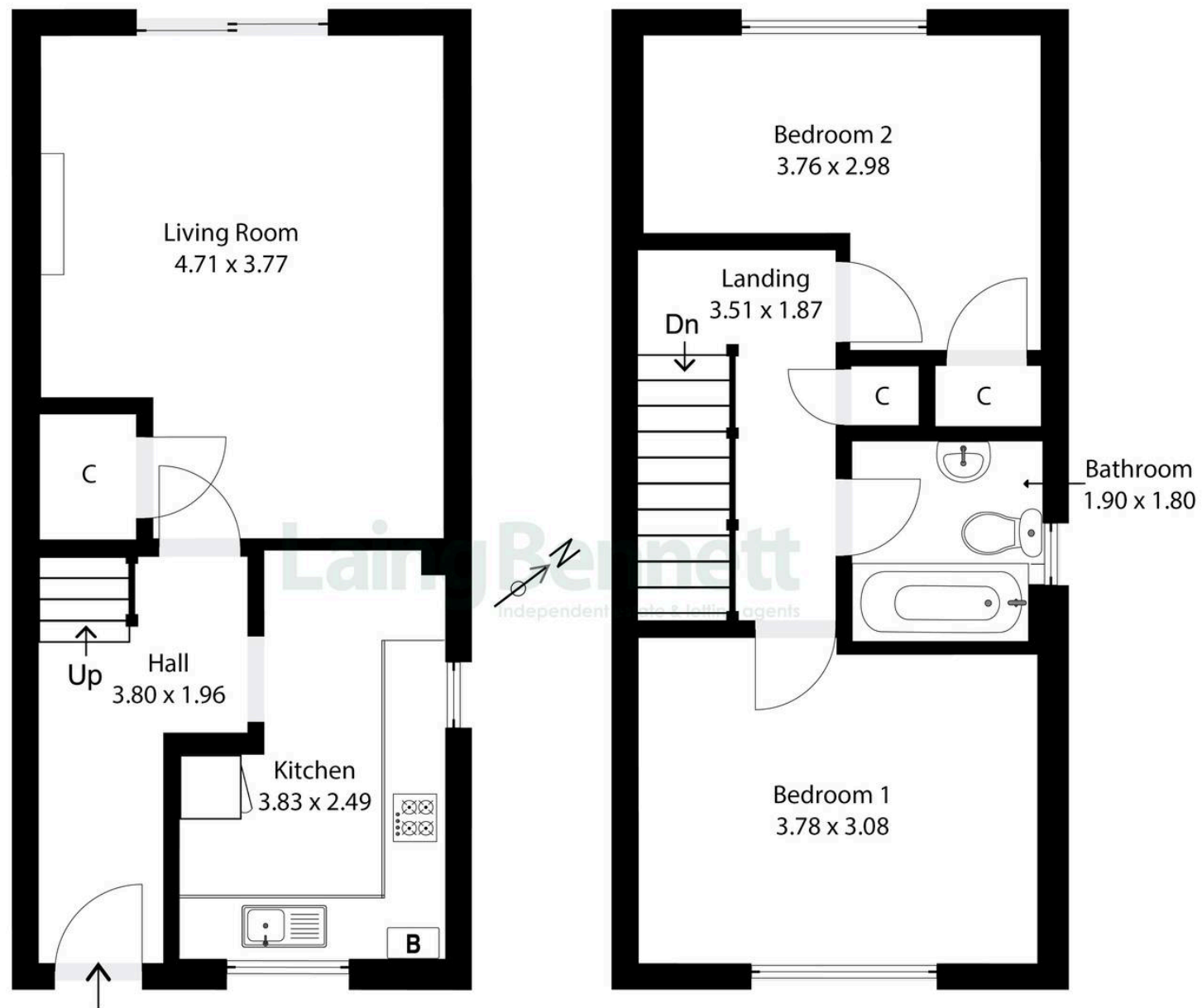


Illustration for Identification purposes only. Measurements are approximate. Dimensions given are between the widest points.

Not to scale. Outbuildings are not shown in actual location.

© Unauthorised reproduction prohibited - chriskemps@hotmail.com



20 St. Marys Close

Etchinghill, Folkestone

The fixed price of £206,500 is for a 70% share of the total market value of £295,000. A beautifully presented two-bedroom semi-detached house, entrance hall, modern kitchen, living/dining room with a contemporary fireplace and sliding glass doors leading to the garden. Two bedrooms and bathroom with bath with overhead shower. Frontage, off-road parking via a paved driveway and rear garden with patio, lawn, mature trees, and shrubs. This home has no chain and ready for you to move in and make it your own.

Council Tax band: C

Tenure: Leasehold

EPC Energy Efficiency Rating: C

EPC Environmental Impact Rating: C





**Laing
Bennett**
Independent estate & letting agents

Laing Bennett

Laing Bennett Ltd, The Estate Office, 8 Station Road – CT18 8HP

01303 863393

info@laingbennett.co.uk

www.laingbennett.co.uk/

DISCLAIMER – These details are for guidance only and do not form part of an offer or contract. Measurements are approximate. Laing Bennett Ltd and the Vendor/Landlord accept no liability. Services and appliances are untested. Applicants must make their own checks. Items shown may not be included. No staff have authority to give warranties.