

## FOR SALE

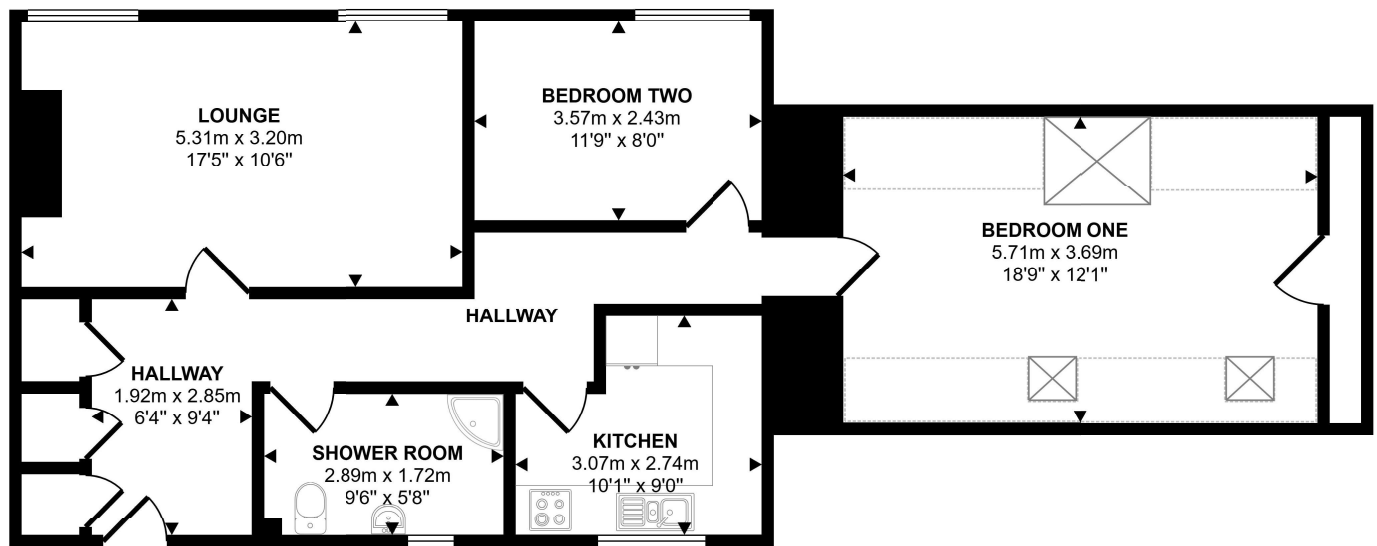
OFFERS OVER

## £95,000

### FLAT 5, 14 HARBOUR TERRACE, WICK, KW1 5HB

This beautifully presented and spacious two-bedroom second-floor apartment offers stunning elevated views over Wick Marina and out to sea, providing a peaceful coastal outlook while remaining close to all local amenities. The property is in excellent decorative order throughout and finished in fresh, neutral tones, featuring a bright lounge, a modern and well-equipped kitchen, two generously sized bedrooms, and a stylish contemporary shower room. Benefiting from gas central heating and double glazing for year-round comfort, this low-maintenance home is ideally suited to first-time buyers or buy-to-let investors seeking a well-located property in the heart of Wick.

Approx Gross Internal Area  
82 sq m / 884 sq ft



Floorplan

Denotes head height below 1.5m

This floorplan is only for illustrative purposes and is not to scale. Measurements of rooms, doors, windows, and any items are approximate and no responsibility is taken for any error, omission or mis-statement. Icons of items such as bathroom suites are representations only and may not look like the real items. Made with Made Snappy 360.

## SERVICES

MAINS WATER AND DRAINAGE. ELECTRICITY & GAS

## EXTRAS

ALL CARPETS, FITTED FLOOR COVERINGS, CURTAINS AND BLINDS.

## GLAZING

DOUBLE GLAZING THROUGHOUT.

## HEATING

GAS CENTRAL HEATING.

## ENTRY

BY MUTUAL AGREEMENT.

## POSTCODE:

KW1 5HB

## LOCATION:

[HTTPS://W3W.CO/SURGICAL.AUNTS.PILED](https://w3w.co/surgical.aunts.piled)

## EPC:

C78

## COUNCIL TAX BAND:

A

## VIEWING

STRICTLY BY APPOINTMENT VIA KR PROPERTIES- TELEPHONE  
01955 950580

## HOME REPORT

HOME REPORT VALUATION - £95,000

A FULL HOME REPORT IS AVAILABLE VIA KR PROPERTIES  
WEBSITE.

AGENTS NOTE: WHILST EVERY CARE HAS BEEN TAKEN TO PREPARE THESE PARTICULARS, THEY ARE FOR GUIDANCE PURPOSES ONLY. ALL MEASUREMENTS ARE APPROXIMATE AND ARE FOR GENERAL GUIDANCE PURPOSES ONLY AND WHILST EVERY CARE HAS BEEN TAKEN TO ENSURE THEIR ACCURACY, THEY SHOULD NOT BE RELIED UPON AND POTENTIAL BUYERS/TENANTS ARE ADVISED TO RECHECK THE MEASUREMENTS