

Ashbourne Road, Eccles

Manchester

HILLS

£280,000

Ashbourne Road

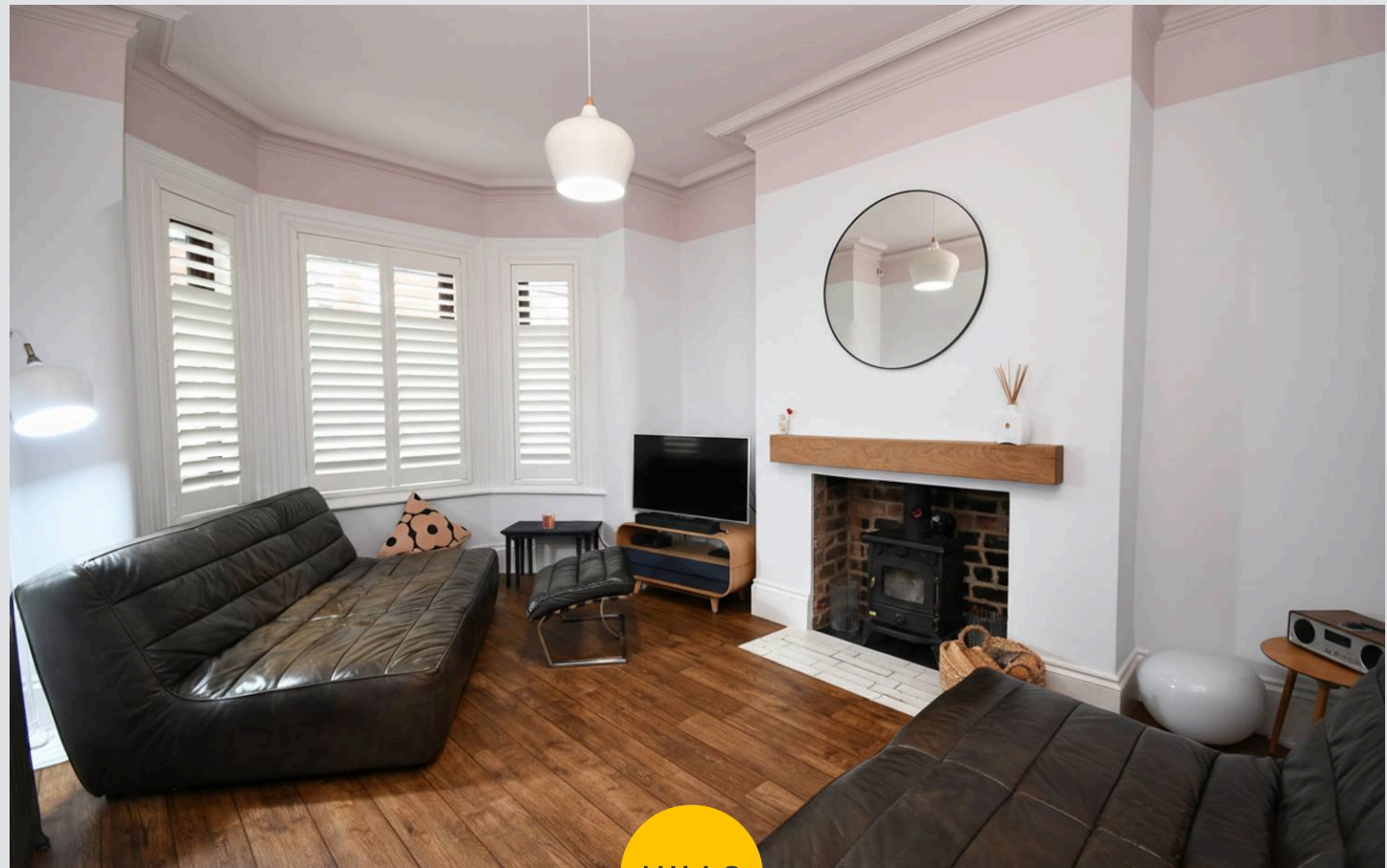
Eccles, Manchester

Spacious, modern three-bed mid-terrace in prime location. Two receptions, stylish kitchen, utility, three doubles, sleek bathroom. Close to schools, shops, transport. Move-in ready.

Council Tax band: B

Tenure: Leasehold

- Perfect First Time Buy or Family Home
- Beautifully Presented Throughout
- Bay Fronted Lounge & Second Reception Room
- Stunning Fitted Modern Kitchen, Separate Utility and External W.C.
- Three Generous Double Bedrooms
- Three Piece Bathroom Suite
- Low Maintenance Sun Drenched Rear Garden
- Excellently Located To Local Amenities Including Schools, Parks and Shops
- Well Served by Public Transport and Motorway Links



HILLS



Entrance Hallway

Reception Room One

15' 0" x 11' 4" (4.57m x 3.45m)

Reception Room Two

14' 0" x 12' 2" (4.27m x 3.71m)

Kitchen

12' 8" x 8' 8" (3.86m x 2.64m)

Utility Room

9' 0" x 5' 5" (2.74m x 1.65m)

Landing

Bedroom One

15' 3" x 12' 2" (4.65m x 3.71m)

Bedroom Two

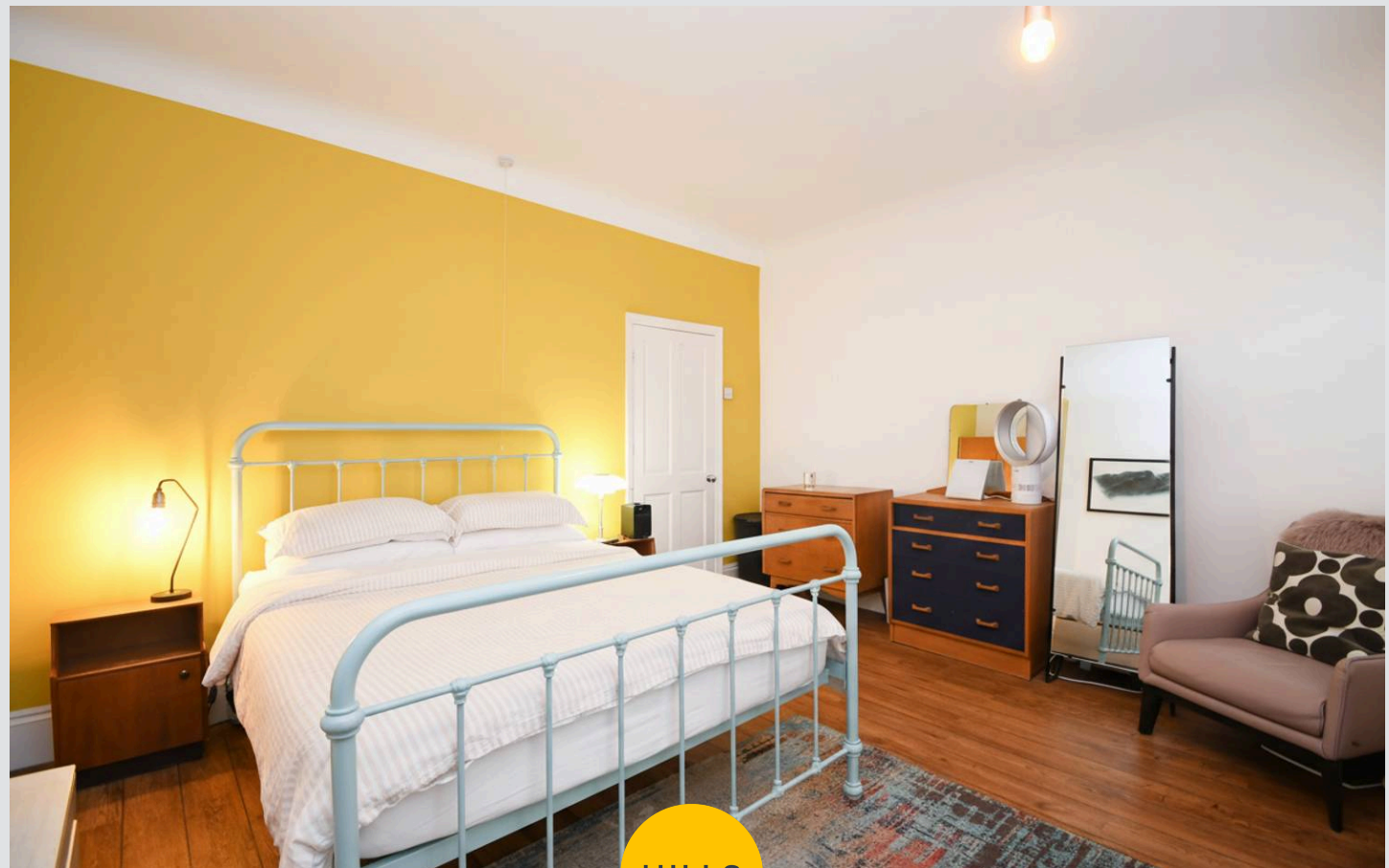
12' 5" x 9' 6" (3.79m x 2.90m)

Bedroom Three

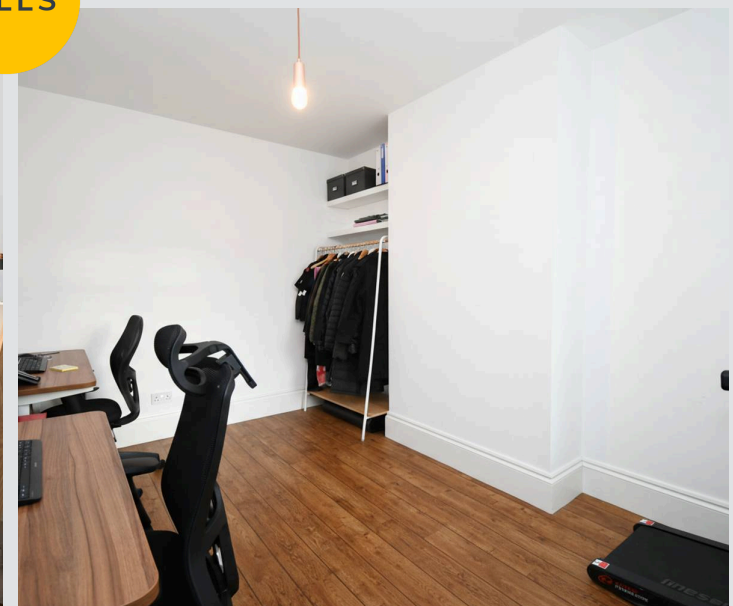
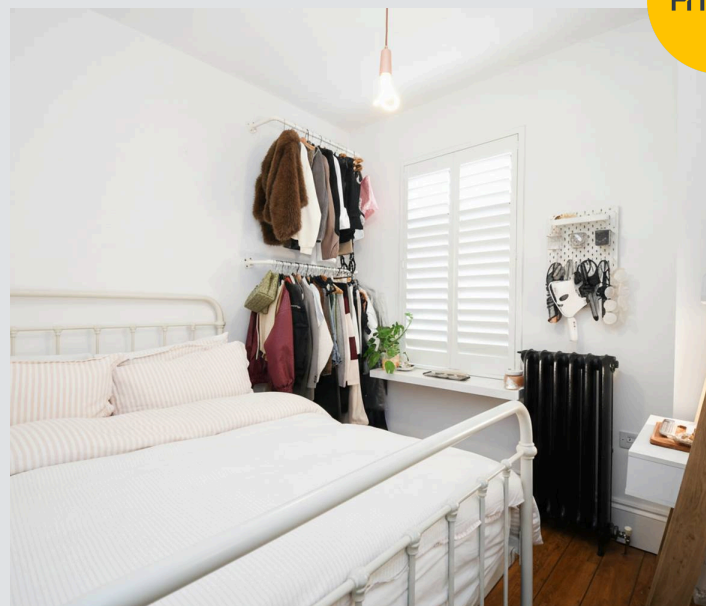
8' 9" x 8' 4" (2.67m x 2.54m)

Bathroom

5' 8" x 5' 5" (1.73m x 1.65m)



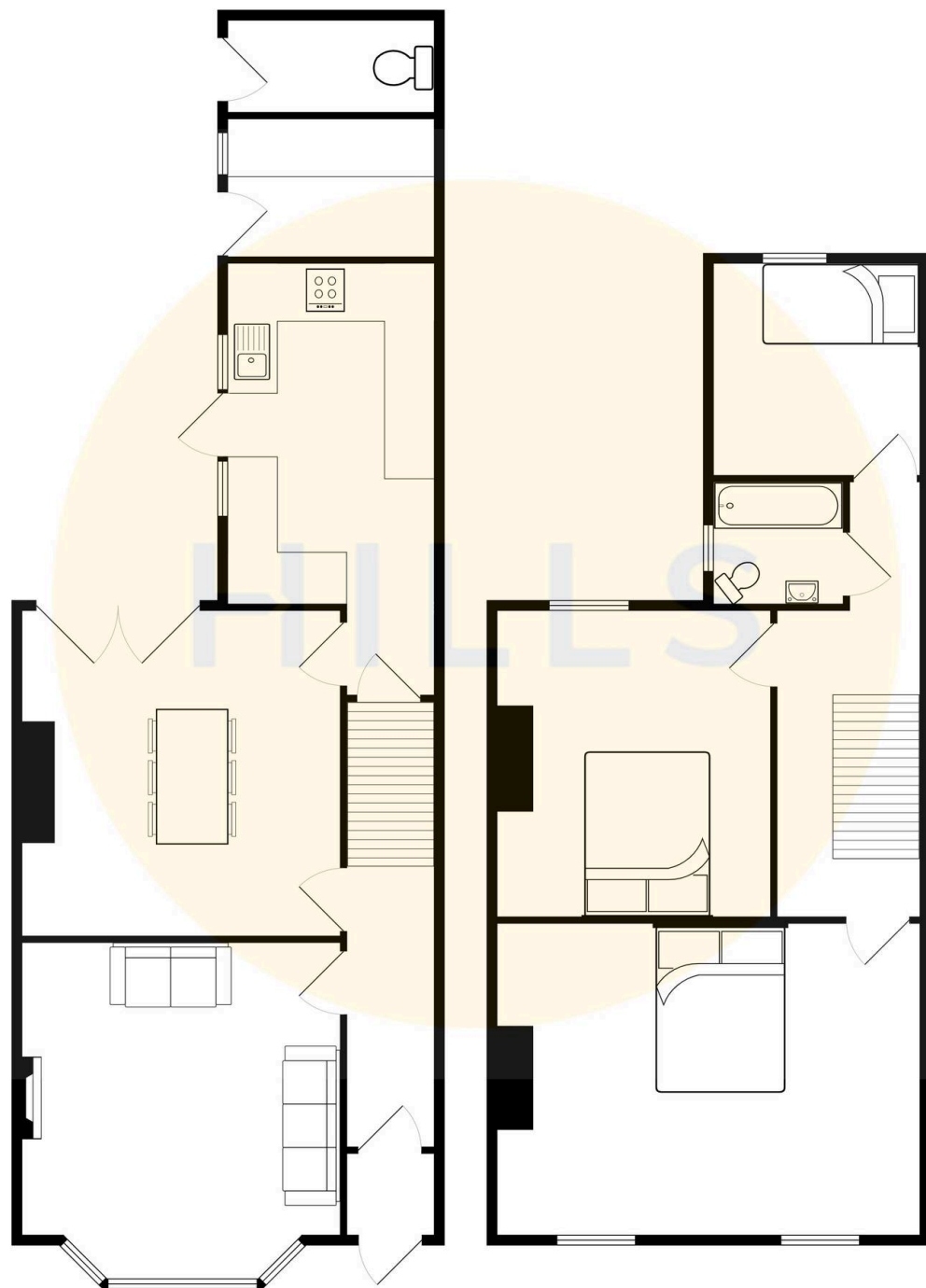
HILLS





HILLS







Hills | Salfords Estate Agent

Hills Residential, Sentinel House Albert Street – M30 0SS

0161 707 4900

sales@hills.agency

www.hills.agency/



By law, we are required to conduct anti-money laundering checks on all potential buyers and sellers. In line with HMRC guidelines, our trusted partner, Coadjute, will securely manage these checks on our behalf. A non-refundable fee of £45 + VAT per person will apply, and Coadjute will handle the payment. Once an offer is accepted, Coadjute will send a secure link for you to complete the biometric checks. These checks must be completed before we can send the memorandum of sale to all parties. PLEASE NOTE: The Agent has not tested any equipment, fixtures, fittings or services so cannot verify that they are in working order or fit for the purpose. References to the properties tenure are based on information supplied by the seller. You are advised to check the availability of this property before travelling any distance to view. Every effort has been made to ensure these particulars are correct and not misleading but their accuracy is not guaranteed nor do they form part of any contract.