

Trippier Road, Eccles

Manchester



Offers Over **£280,000**

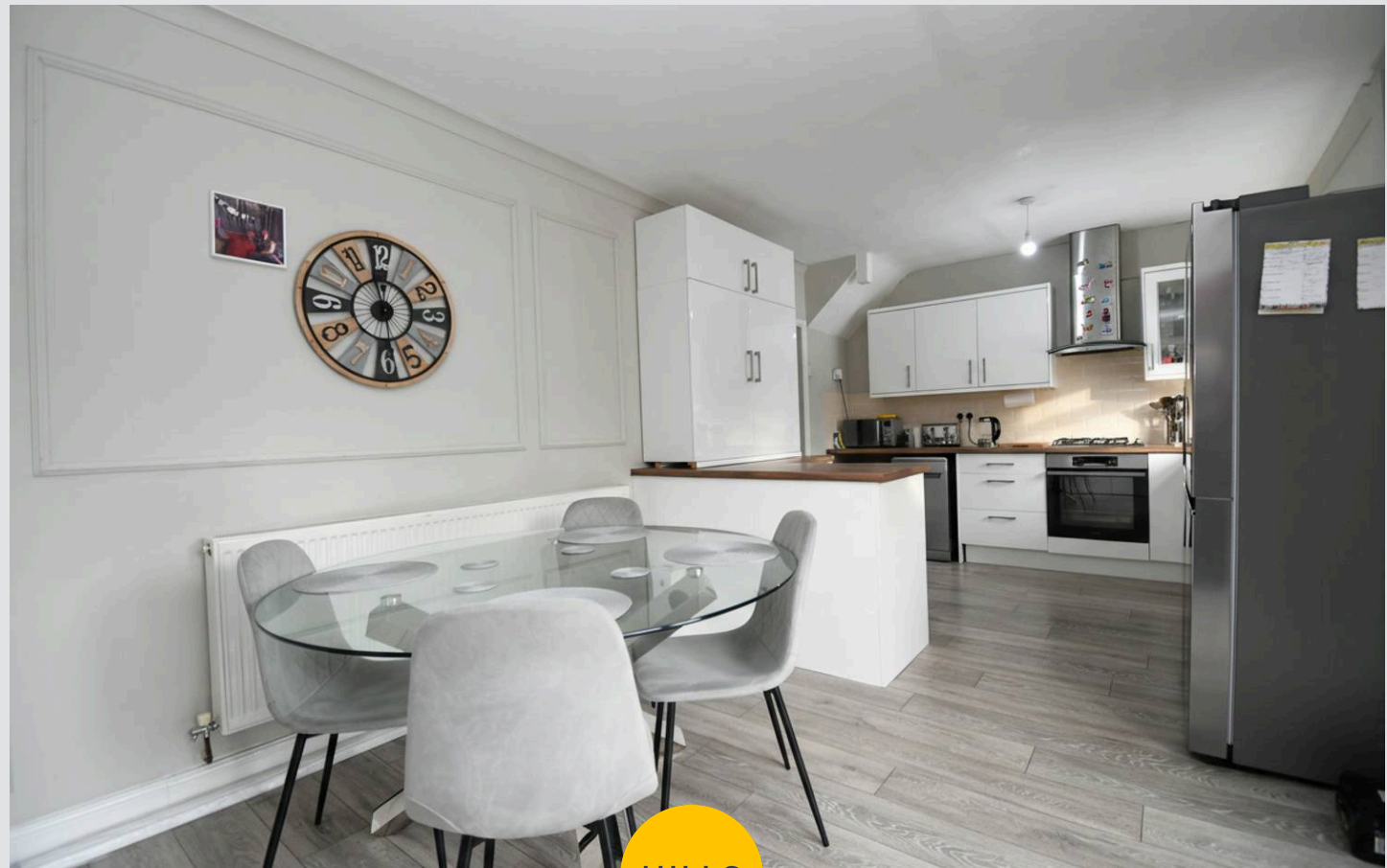
Trippier Road

Eccles, Manchester

Beautifully presented three bed terraced house in sought after area. Features open plan kitchen, spacious lounge, modern bathroom, loft, rear garden, and off road parking. Close to shops and transport.

Council Tax band: A

- Fantastic First Time Buy
- Spacious Lounge
- Stunning Open Plan Fitted Kitchen and Dining Space
- Three Generously Sized Bedrooms
- Modern Three Piece Bathroom Suite
- Boarded Out Loft Space
- Off Road Parking for Multiple Cars to the Front
- Private, Sun Drenched Rear Garden with Built in Bar Area
- Perfectly Positioned Close to Shops, Schools and Brilliant Transport Links



HILLS



Entrance Hallway

Lounge

14' 0" x 10' 6" (4.26m x 3.20m)

Kitchen/Diner

20' 3" x 10' 9" (6.17m x 3.27m)

Landing

Bedroom One

10' 6" x 10' 5" (3.20m x 3.17m)

Bedroom Two

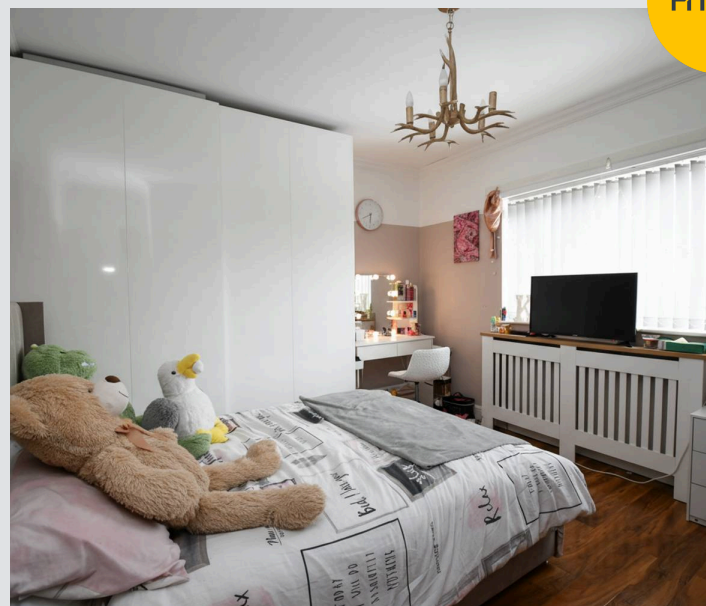
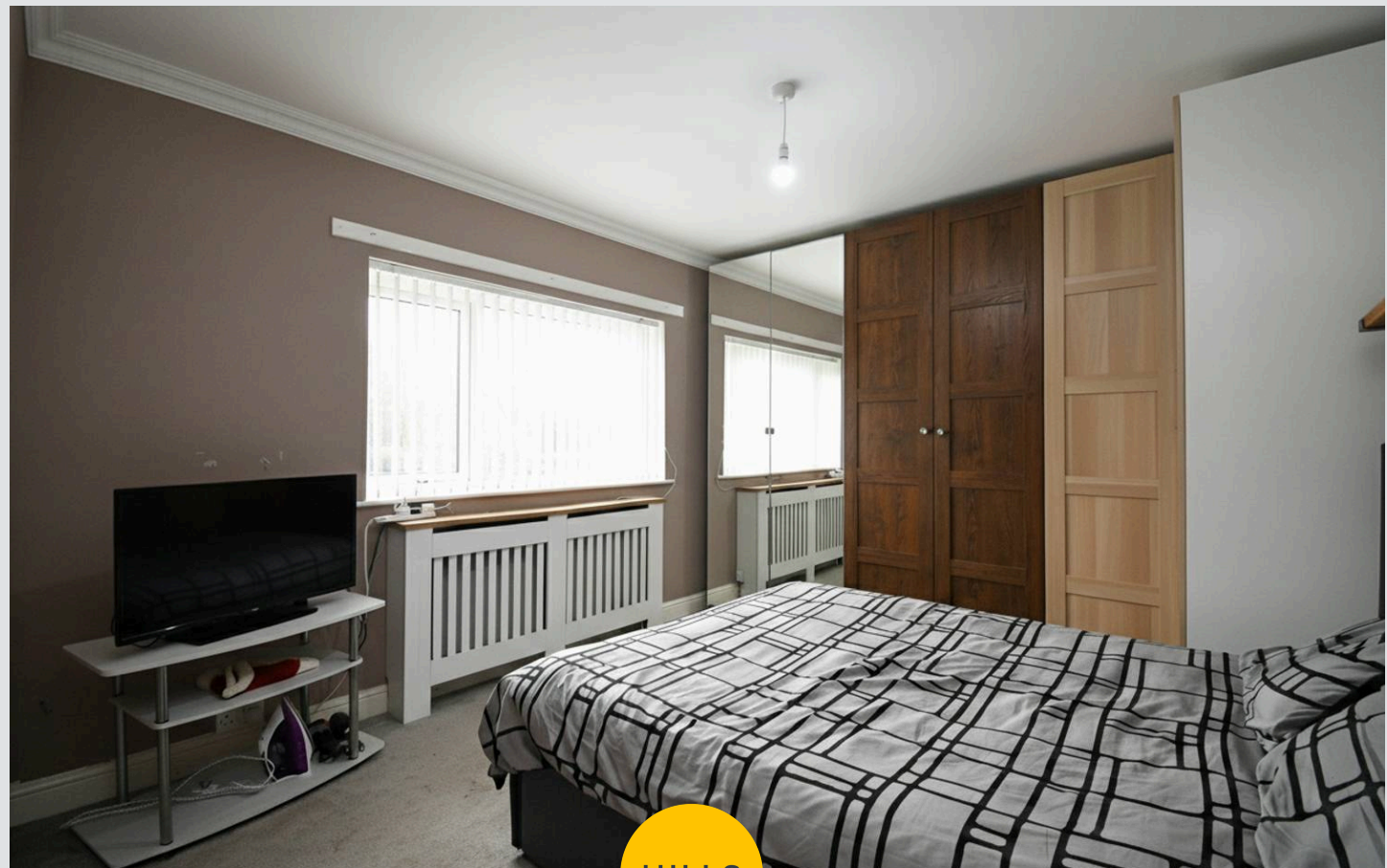
12' 4" x 9' 8" (3.76m x 2.94m)

Bedroom Three

9' 7" x 7' 7" (2.92m x 2.31m)

Bathroom

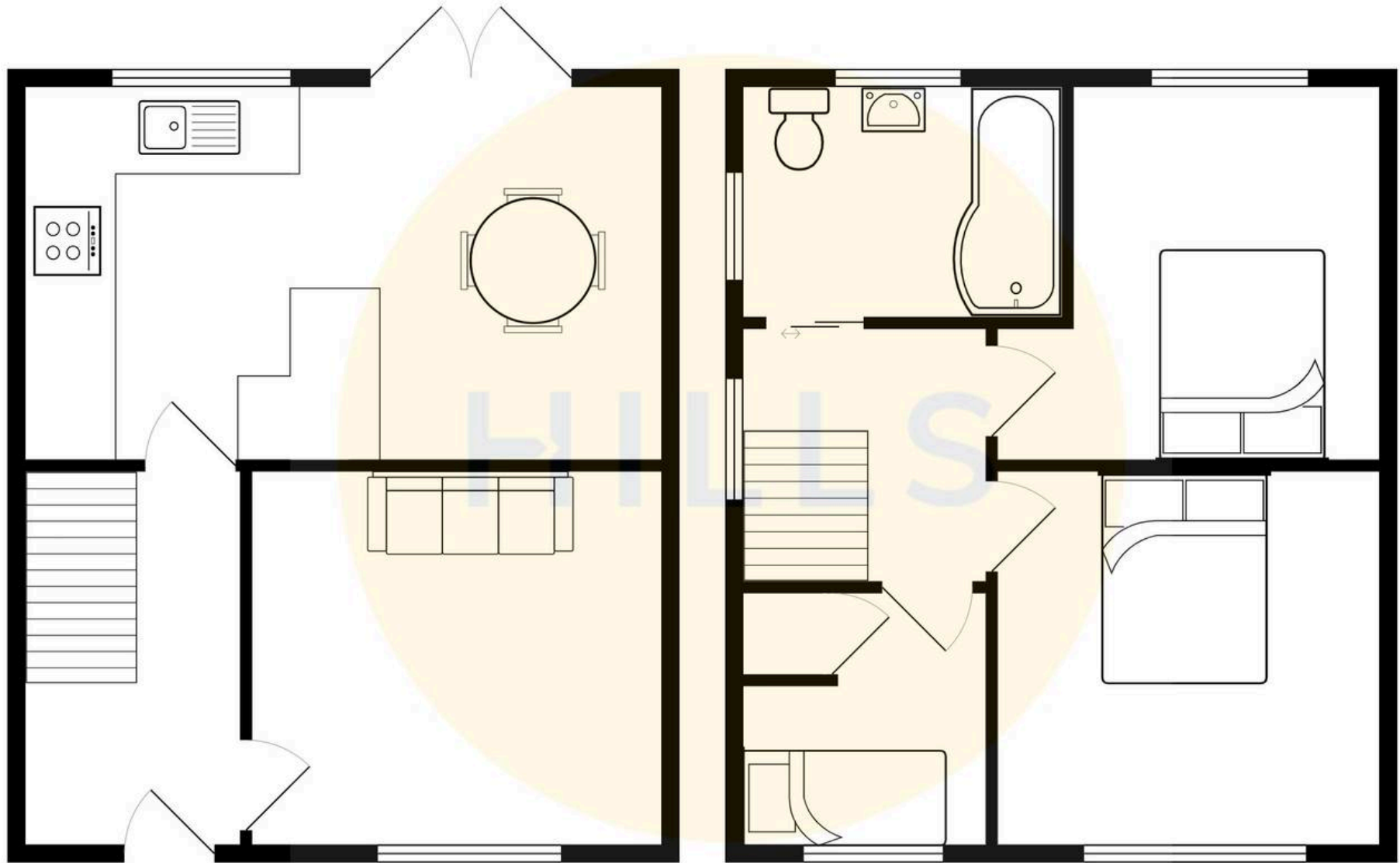
7' 6" x 5' 6" (2.28m x 1.68m)





HILLS







Hills | Salfords Estate Agent

Hills Residential, Sentinel House Albert Street – M30 0SS

0161 707 4900

sales@hills.agency

www.hills.agency/



By law, we are required to conduct anti-money laundering checks on all potential buyers and sellers. In line with HMRC guidelines, our trusted partner, Coadjute, will securely manage these checks on our behalf. A non-refundable fee of £45 + VAT per person will apply, and Coadjute will handle the payment. Once an offer is accepted, Coadjute will send a secure link for you to complete the biometric checks. These checks must be completed before we can send the memorandum of sale to all parties. PLEASE NOTE: The Agent has not tested any equipment, fixtures, fittings or services so cannot verify that they are in working order or fit for the purpose. References to the properties tenure are based on information supplied by the seller. You are advised to check the availability of this property before travelling any distance to view. Every effort has been made to ensure these particulars are correct and not misleading but their accuracy is not guaranteed nor do they form part of any contract.