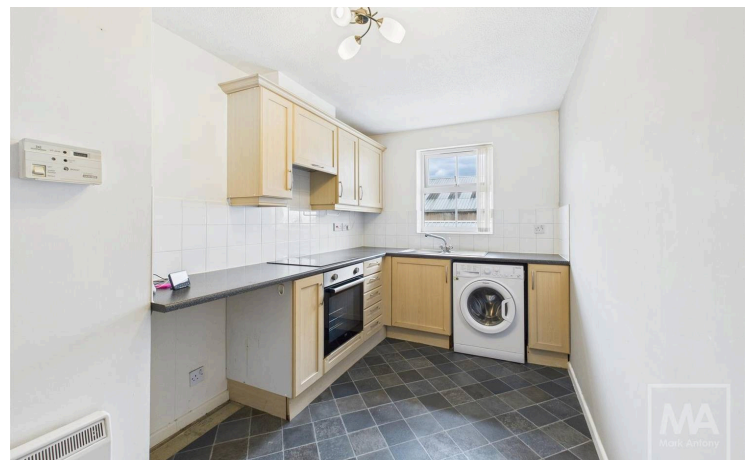




Mark Antony
SALES & LETTING AGENTS

To LET

Finsbury Close, Great Sankey Unfurnished

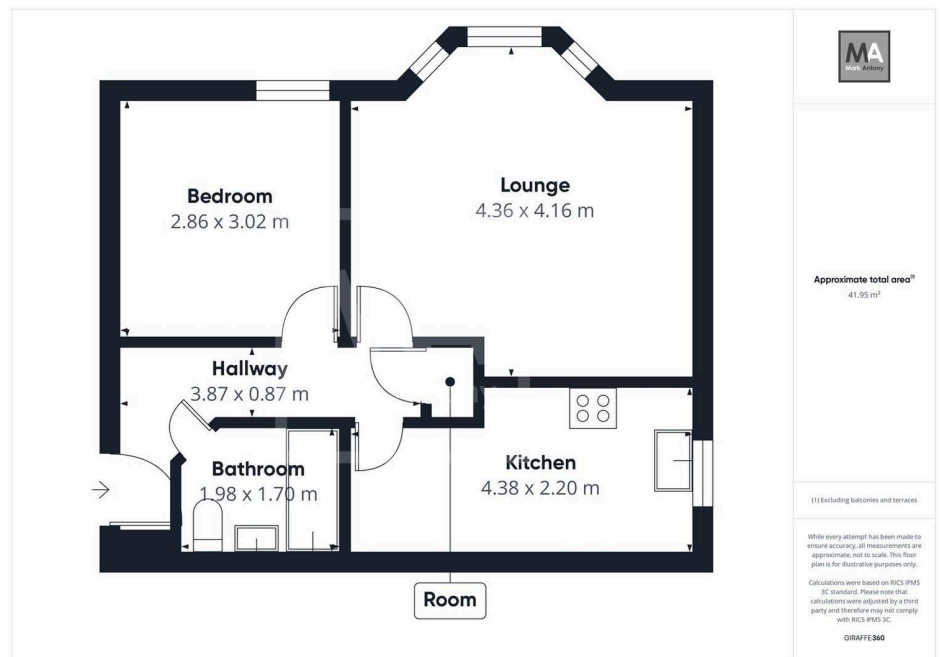


PROPERTY DESCRIPTION

A well-presented one-bedroom apartment offering modern, comfortable living in an exceptionally convenient location. The property features a bright living room, a separate fitted kitchen, a generous double bedroom, and a spacious bathroom. Positioned close to shops, transport links, and local amenities, it's ideal for anyone seeking easy access to daily essentials and smooth connections for commuting. A practical, low-maintenance home perfectly suited to busy lifestyles.

PROPERTY FEATURES

- Top Floor Apartment
- Allocated Parking
- Spacious Lounge
- Transport Links
- Close To Amenities
- Large Double Bedroom
- Sought After Location
- Convenient Kitchen
- Long Term Tenancy
- Visitor Parking Available



NOTES TO PERSPECTIVE TENANTS

Washing machine, fridge/freezer, wardrobe and corner stand supplied on none repairable none replaceable

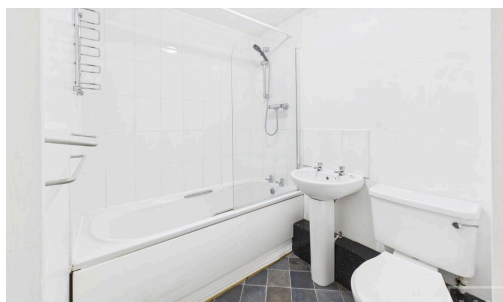
Allocated parking

RENTAL AVAILABLE FROM

15th February 2026

GERENAL INFORMATION

- Council Tax band: A
- EPC Energy Efficiency Rating: C



£50 FOR YOU! *and they sign up fully managed with us.

if you refer a Warrington landlord*

MA
Mark Antony

Note: These details have been prepared as a general guide only and do not constitute any part of any contract. The function of any appliances, services, sockets or cables are not guaranteed. Any interested party should satisfy themselves about any matter of importance to them and not rely on the contents of these particulars when making the decision to offer.

SCAN ME!

safeagent **The Property Ombudsman**