



168 Edwards Lane, Nottingham – NG5 3HZ

Guide Price **£325,000**

DavidJames
the estate agent



168 Edwards Lane

Nottingham, Nottingham

Stylishly-presented 4 bed semi-detached home with excellent local amenities and City Hospital nearby - available with no upward chain and offering open plan living space, parking and a private garden!

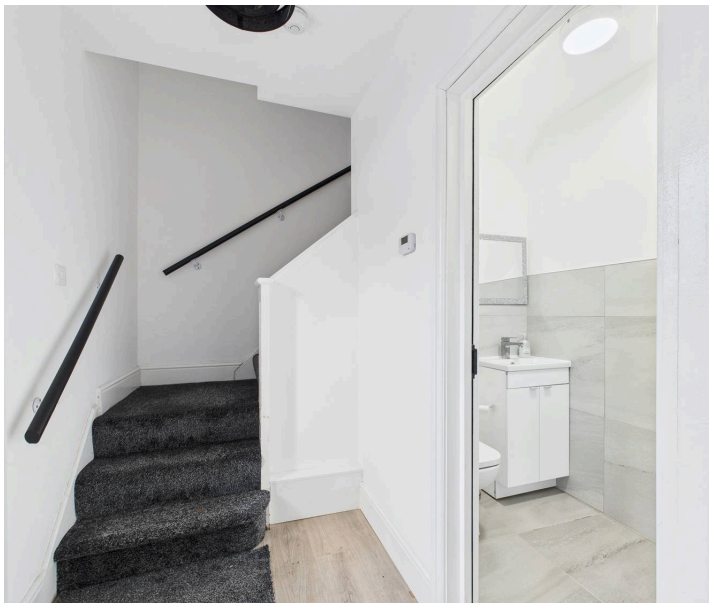
Council Tax band: C

Tenure: Freehold

EPC Energy Efficiency Rating: E

EPC Environmental Impact Rating: F

- Well-presented and renovated semi-detached family home set across three floors
- Within easy reach of excellent local amenities, schools and transport links
- Nottingham City Hospital on the doorstep providing a simple commute for healthcare professionals
- Available to purchase with no upward chain
- Welcoming entrance hall and a convenient cloakroom/WC
- Large open plan kitchen, dining and living area ideal for modern family living
- Four double bedrooms across the two upper floors
- Sleek first floor modern bathroom and a separate contemporary second floor shower room
- Generous and enclosed rear garden with lawn and privacy fencing
- Block-paved driveway providing practical off-street parking for residents and visitors









Floor 0



Floor 1

Approximate total area⁽¹⁾

92.7 m²

998 ft²

(1) Excluding balconies and terraces

Calculations reference the RICS IPMS 3C standard. Measurements are approximate and not to scale. This floor plan is intended for illustration only.

GIRAFFE360



Floor 2





David James Estate Agents

98-100 Front Street, Arnold - NG5 7EJ

0115 955 5550 • arnold@david-james.com • www.david-james.com

These particulars are produced in good faith and are set out as a general guide only. Measurements are approximate and floor plans are for illustrative purposes only. Services have not been tested. We have established professional relationships with third-party suppliers for the provision of services to Clients, details of which can be found on the property listing page on our website.