



Elliot Heath
ESTATE AGENTS

10 Malthouse Mews, Ware
Offers Over £600,000

10 Malthouse Mews

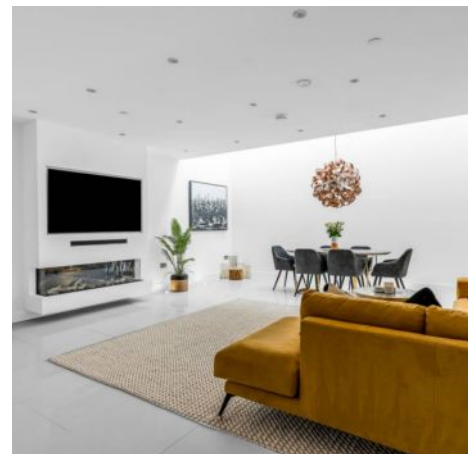
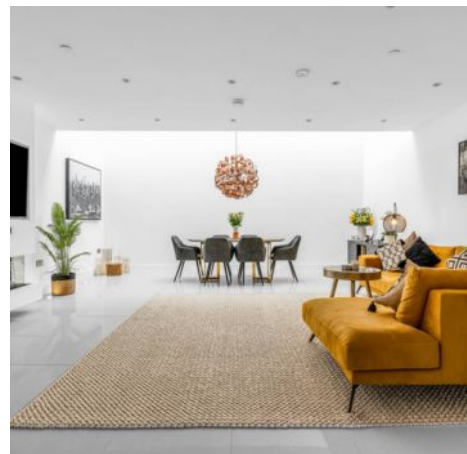
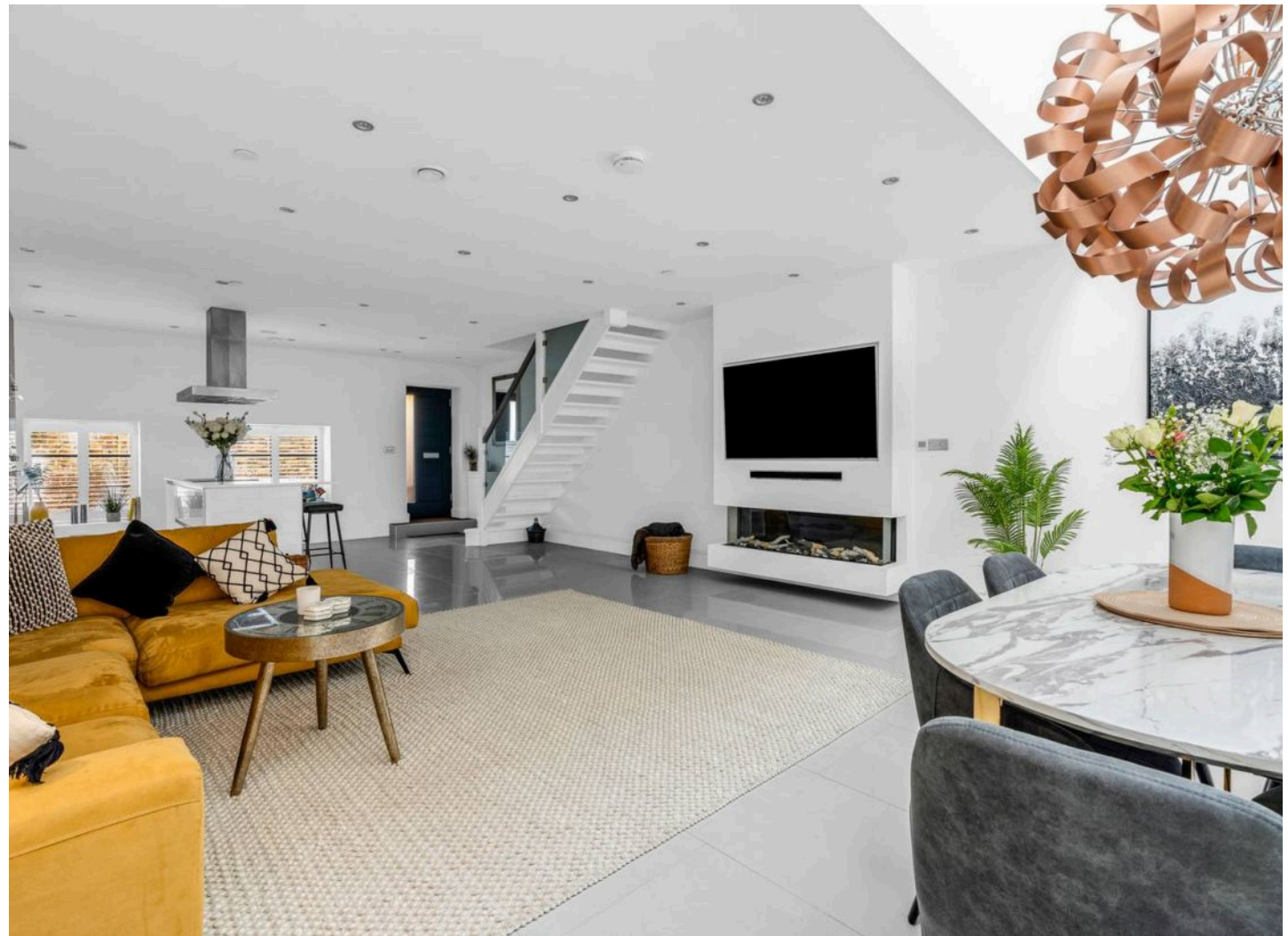
Ware, Ware

Mews house in Victorian malting's in heart of Ware.
3-bed, open plan living, high spec kitchen, 1st floor
has 2 beds & bathroom, 2nd floor has large
bedroom suite, patio to front, parking for 1 car.
Council Tax band: E

Tenure: Freehold

EPC Energy Efficiency Rating: C

EPC Environmental Impact Rating: C

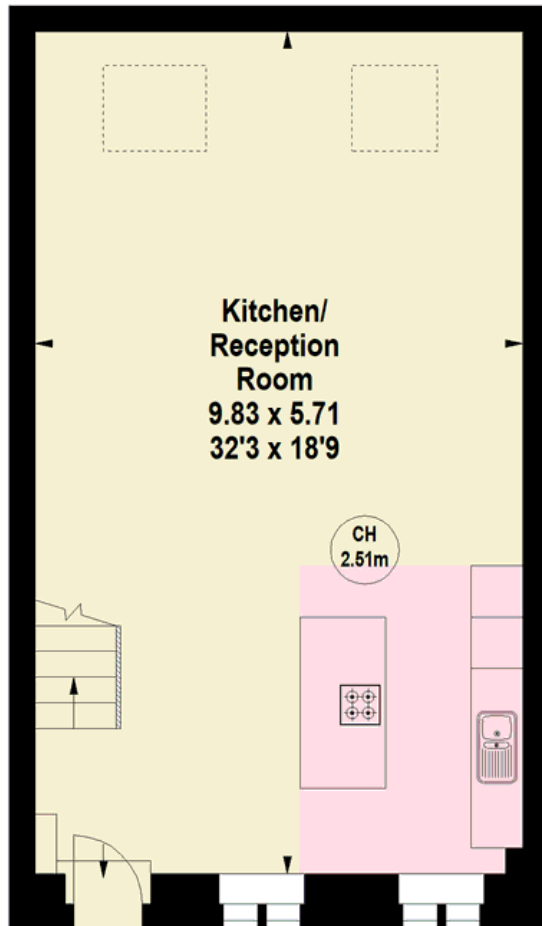


Malthouse Mews, SG12

Approximate Area = 148.55 sq m / 1599 sq ft

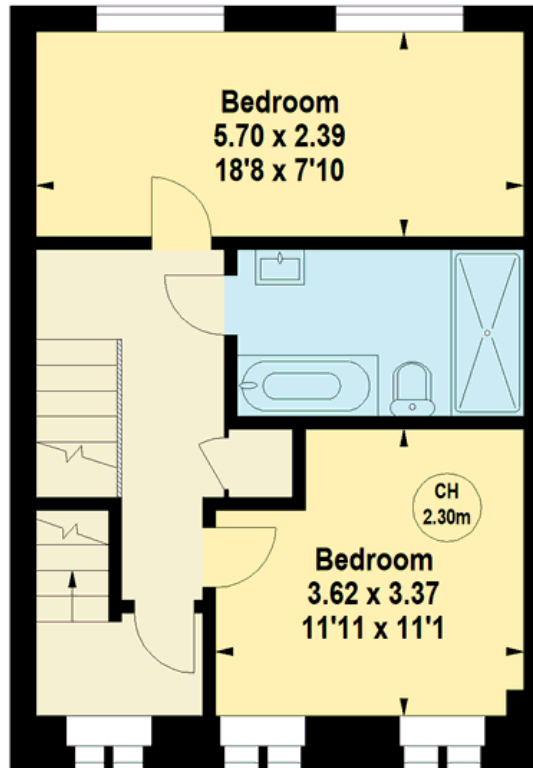


Key :
CH - Ceiling Height



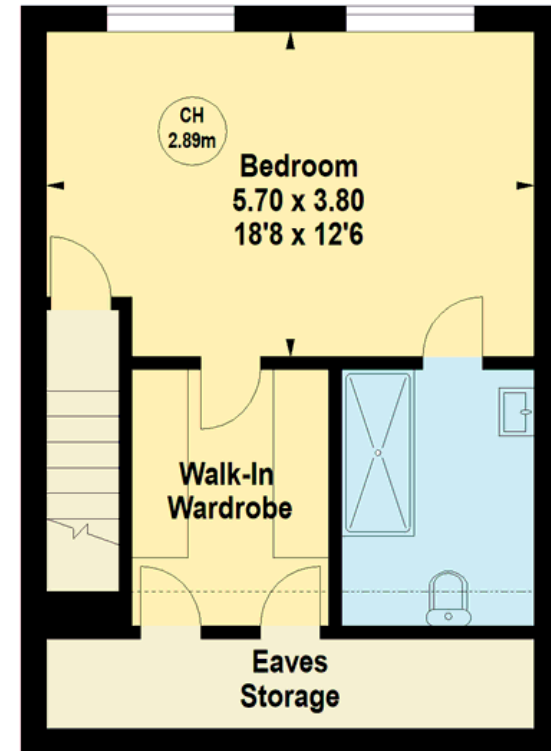
Ground Floor

Approx. 56.48 sq m / 608 sq ft



First Floor

Approx. 45.61 sq m / 491 sq ft



Second Floor

Approx. 46.45 sq m / 500 sq ft

Illustration For Identification Purposes Only.
All measurements and areas are approximate, not to scale.
© Orange Tree Photography

Accommodation

Private front entrance door to:

Kitchen/Reception Room

32' 3" x 18' 9" (9.83m x 5.71m)

Kitchen

With two double glazed windows to front aspect with fitted shutters. Comprehensively fitted with a contemporary range of wall and base storage units with work surfaces over incorporating a sink and drainer unit, two built in ovens, hob with extractor over, integrated appliances, breakfast bar, tiled flooring with under floor heating, open to:

Reception Room

Impressive triple height room with skylight windows, media wall with feature fireplace, tiled flooring with under floor heating and stairs rising to first floor landing.

First Floor Landing

With double glazed window to front aspect, stairs rising to second floor, two built in storage cupboards, wood effect flooring, doors to:

Bedroom Two

11' 11" x 11' 1" (3.62m x 3.37m)

With double glazed windows to front aspect with fitted shutters, wood effect flooring with under floor heating.

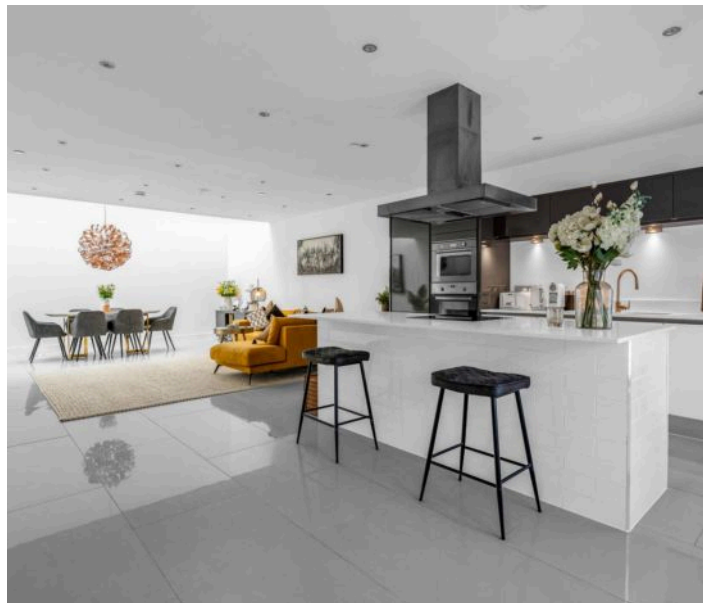
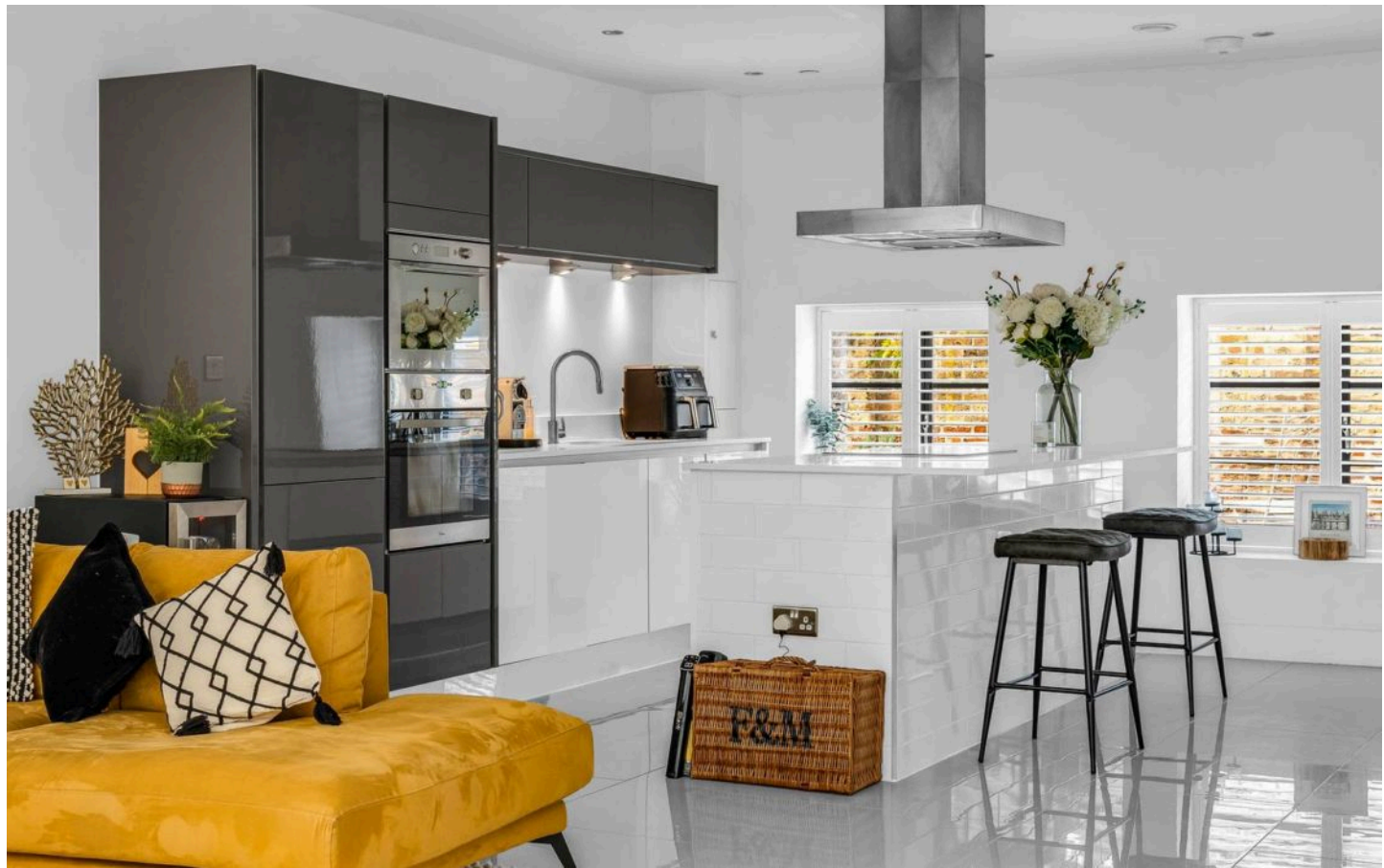
Bedroom Three

18' 8" x 7' 10" (5.70m x 2.39m)

With windows overlooking the reception room, wood effect flooring with underfloor heating.

Bathroom

With skylight window. Fitted with a suite comprising tile enclosed bath, vanity unit with inset wash hand basin, concealed cistern wc, tiled walls, tiled flooring, chrome heated towel rail.



Second Floor Landing

With door to:

Bedroom One

18' 8" x 12' 6" (5.70m x 3.80m)

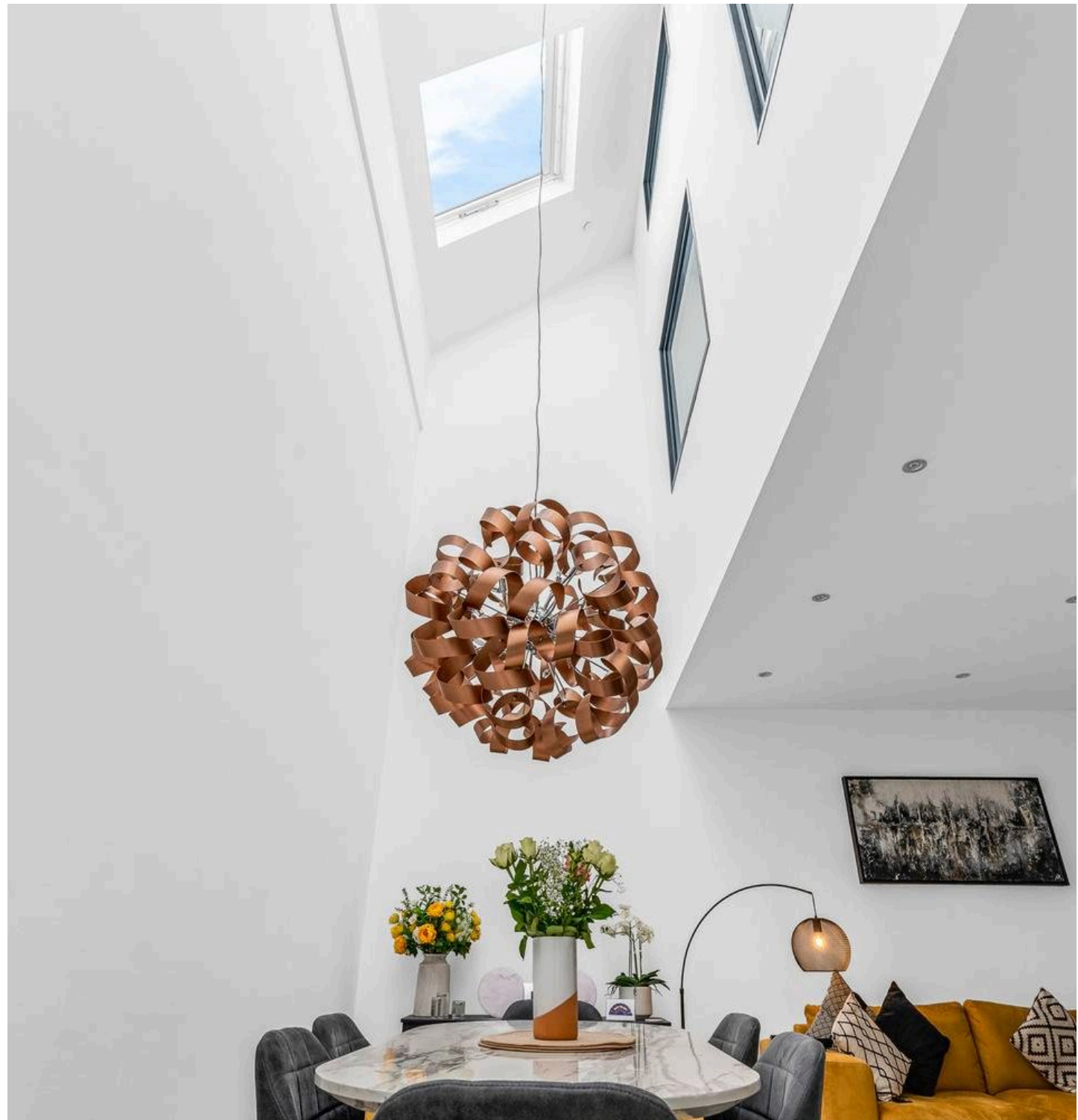
With windows over looking the reception room, under floor heating, doors to:

Walk In Wardrobe

Comprehensively fitted walk in wardrobe, doors to eaves storage.

En Suite Shower Room

With skylight window. Fitted with a suite comprising walk in shower cubicle, concealed cistern wc, vanity unit with wash hand basin, tiled walls, tiled flooring, chrome heated towel rail.





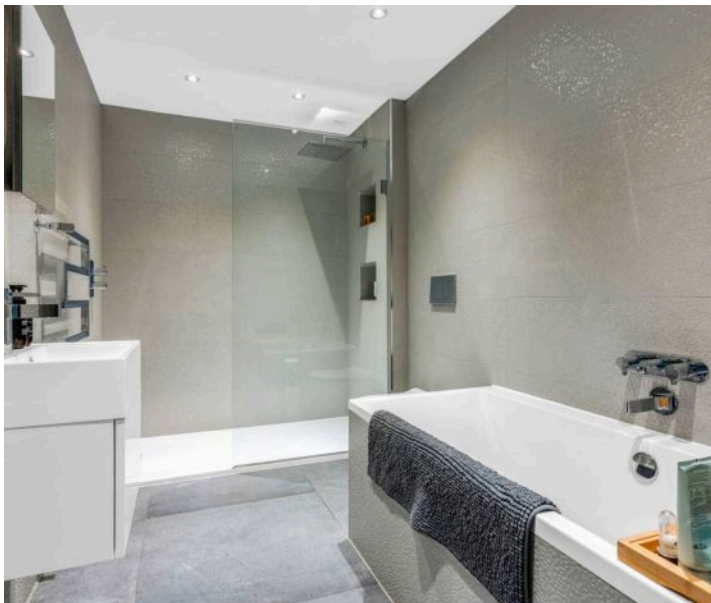
FRONT GARDEN

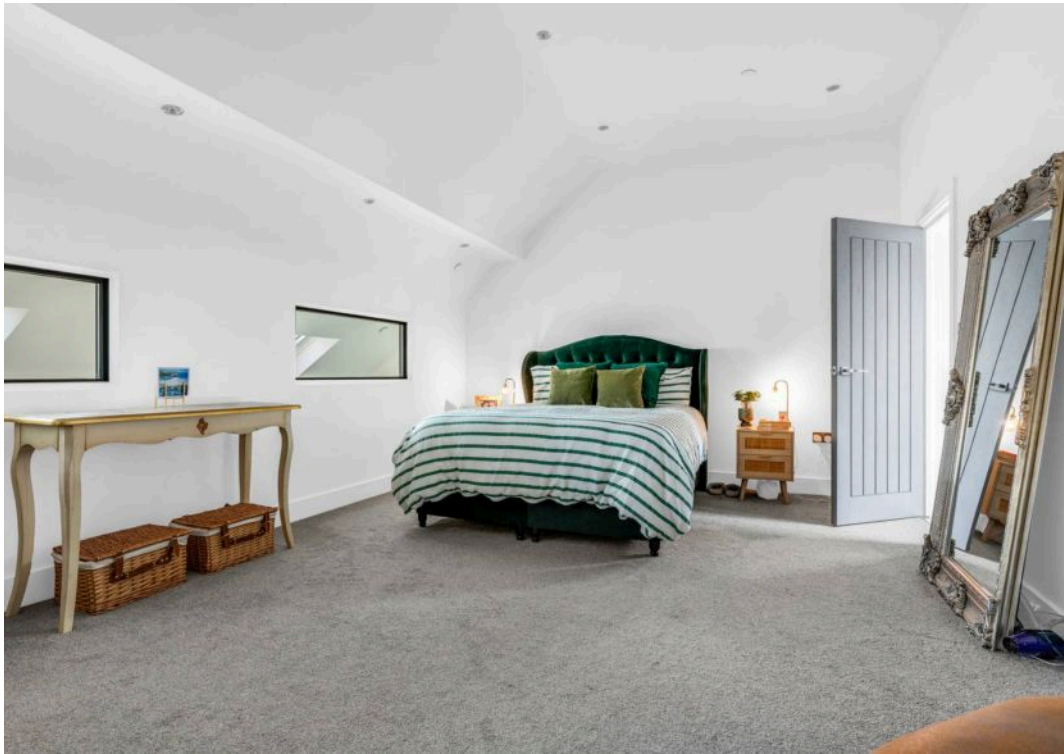
Seating area to the front.

ALLOCATED PARKING

1 Parking Space

Allocated parking for one car.







Elliot Heath Estate Agents

Elliot Heath Estate Agents, 7 Star Street – SG12 7AA

01920 29 33 33

hello@elliotheath.co.uk

elliotheath.co.uk