





This well-presented semi-detached house offers a versatile and contemporary living space in a popular residential area. Accommodation includes three generously sized bedrooms, two bright reception rooms, and two modern bathrooms, providing flexible options for family living or professional households.

Externally, the property features a private rear garden, perfect for outdoor entertaining or relaxation, and benefits from off-street parking. The home is in good condition throughout and ready for immediate occupation.

Located in a convenient area with excellent access to local amenities and transport links, the property presents strong potential for owner-occupiers or investors seeking a high-demand rental opportunity. A fantastic opportunity to secure a stylish home in a sought-after neighbourhood – early viewing is recommended.



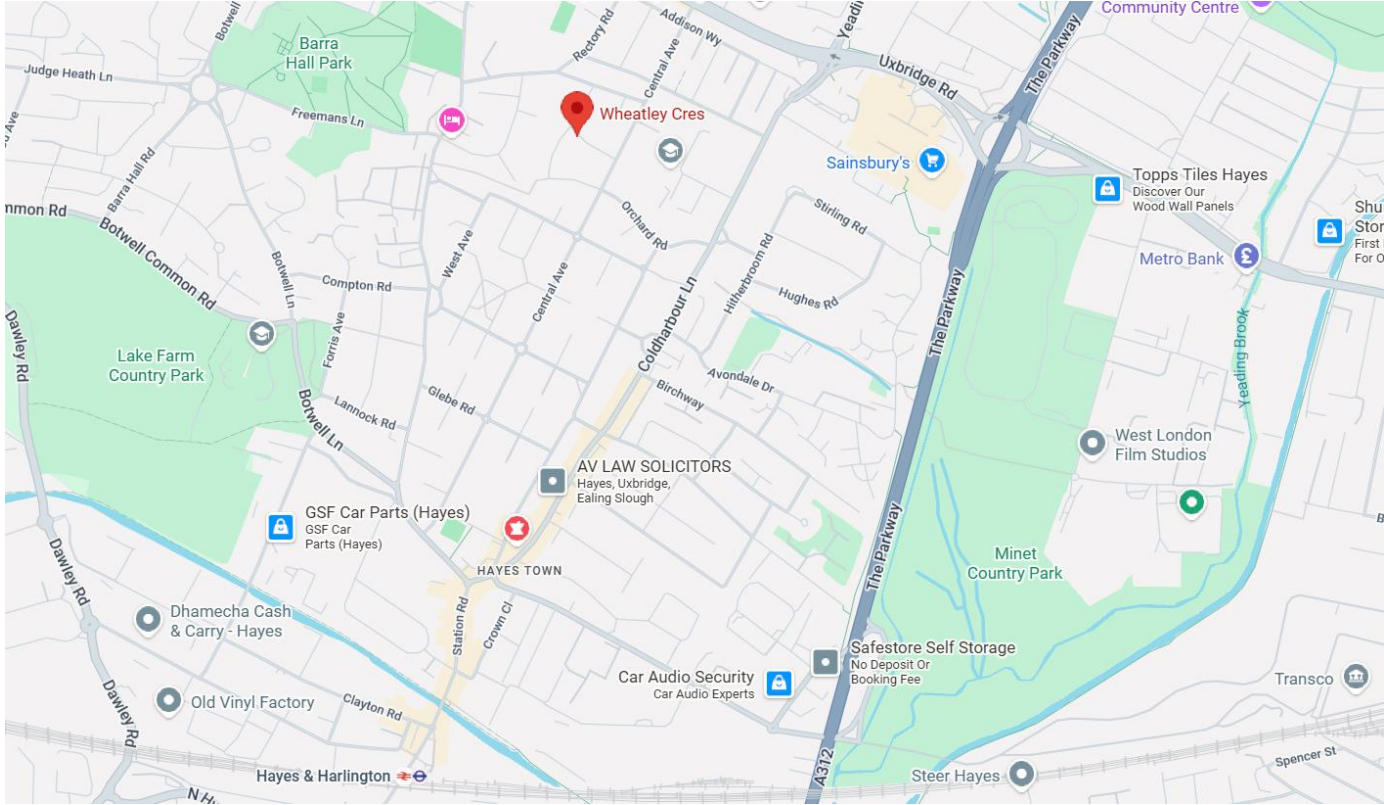
Semi-detached house in popular residential area

Three well-sized bedrooms

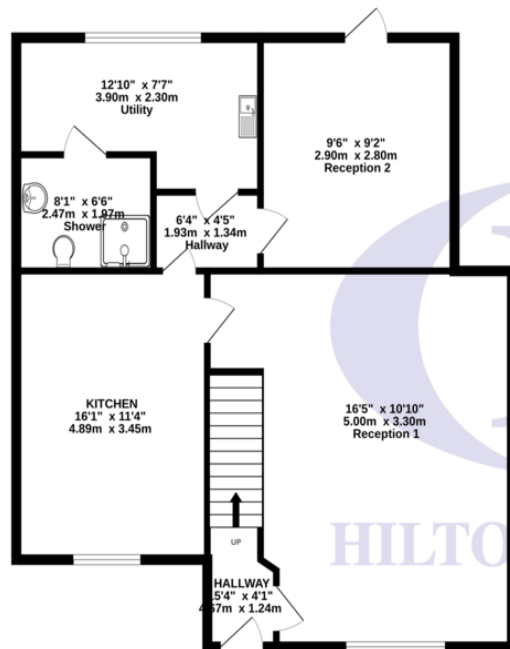
Two bright, spacious reception rooms

Two modern bathrooms

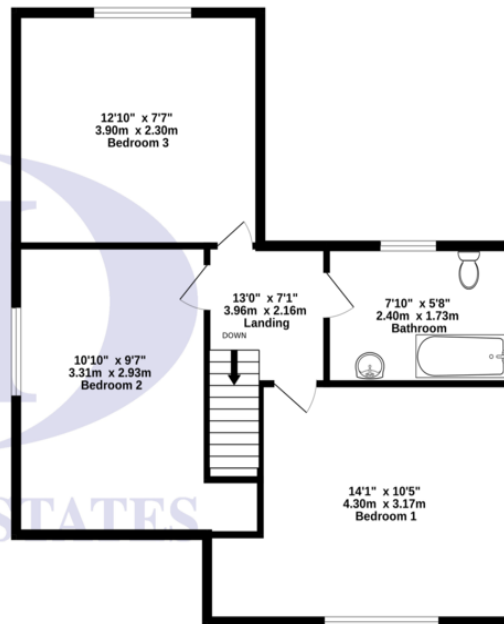
Private rear garden for entertaining or relaxation



GROUND FLOOR
894 sq.ft. (83.1 sq.m.) approx.



1ST FLOOR
746 sq.ft. (69.3 sq.m.) approx.



TOTAL FLOOR AREA: 1640 sq.ft. (152.4 sq.m.) approx.

Whilst every attempt has been made to ensure the accuracy of the floorplan contained here, measurements of doors, windows, rooms and any other items are approximate and no responsibility is taken for any error, omission or mis-statement. This plan is for illustrative purposes only and should be used as such by any prospective purchaser. The services, systems and appliances shown have not been tested and no guarantee as to their operability or efficiency can be given.
Made with Metropix ©2025



Score	Energy rating	Current	Potential
92+	A		
81-91	B		86 B
69-80	C		
55-68	D	64 D	
39-54	E		
21-38	F		
1-20	G		

Hiltons Estates, 137 Western Road
Southall, UB2 5HN

www.hiltons-estates.com
email: harvin@hiltons-estates.com
0208 867 9555 / 07961 527301

Agents Note: Whilst every care has been taken to prepare these sales particulars, they are for guidance purposes only. All measurements are approximate are for general guidance purposes only and whilst every care has been taken to ensure their accuracy, they should not be relied upon and potential buyers are advised to recheck the measurements.