



30 Marina View, Hebburn

Offers In The Region Of £175,000

End Terrace Bungalow • 2 Bedroom • Spacious Living Room With Feature Fireplace • Modern Fitted Kitchen • Stylish Modern Shower Room • Conservatory With Garden Views



Hallway**Lounge**

19' 2" x 9' 11" (5.84m x 3.03m)

Kitchen

9' 11" x 8' 9" (3.01m x 2.67m)

Conservatory

7' 3" x 12' 4" (2.20m x 3.76m)

Master Bedroom

10' 10" x 10' 3" (3.31m x 3.12m)

Bedroom 2

10' 3" x 9' 0" (3.12m x 2.75m)

Shower Room

7' 1" x 5' 1" (2.15m x 1.56m)

Lawned Front Garden**Private well Maintained Rear Garden**

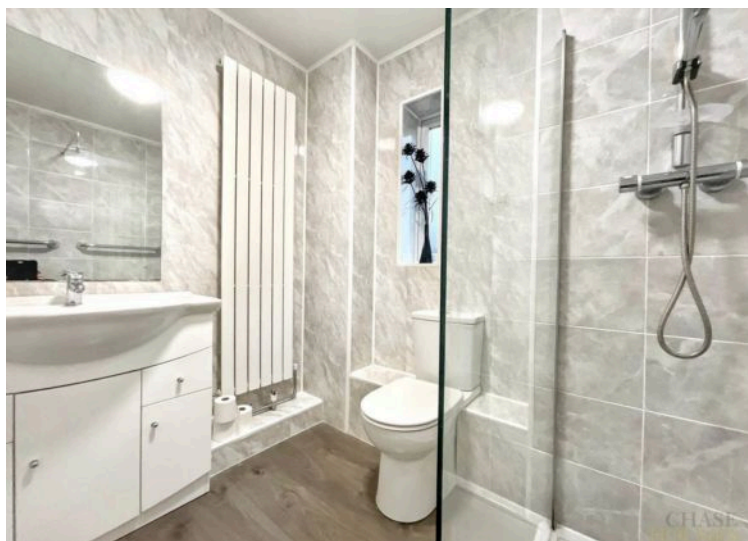
Beautiful end two bedroom terraced bungalow with spacious living room, modern kitchen, stylish shower room, conservatory, efficient heating, double glazing and close to local amenities.

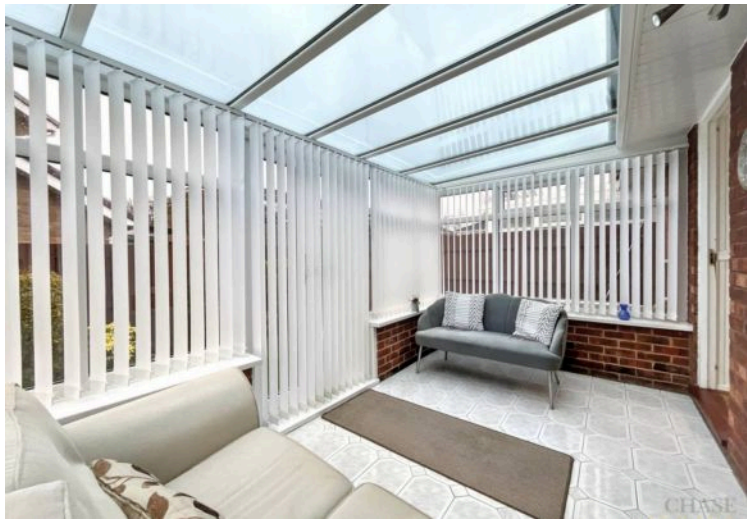
Council Tax band: A

Tenure: Freehold

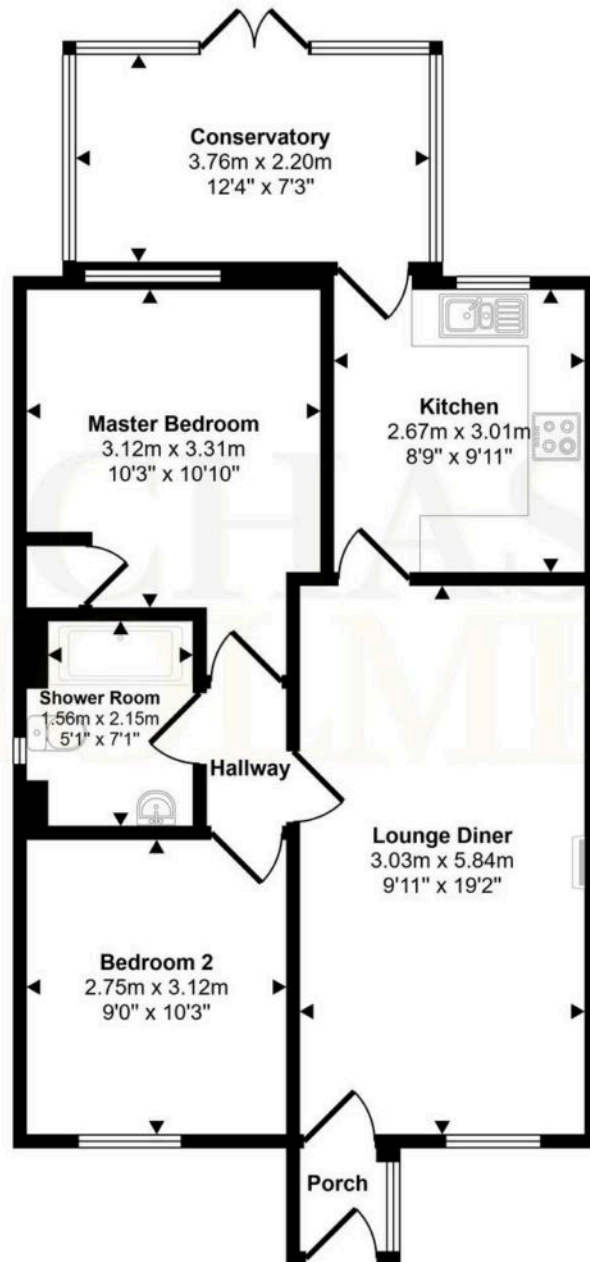
EPC Energy Efficiency Rating: D

EPC Environmental Impact Rating: E





Approx Gross Internal Area
64 sq m / 685 sq ft



Floorplan

This floorplan is only for illustrative purposes and is not to scale. Measurements of rooms, doors, windows, and any items are approximate and no responsibility is taken for any error, omission or mis-statement. Icons of items such as bathroom suites are representations only and may not look like the real items. Made with Made Snappy 360.

You can include any text here. The text can be modified upon generating your brochure.