



113 Ipswich Road, Woodbridge
Woodbridge

Offers in Region of **£600,000**



113 Ipswich Road

Woodbridge, Woodbridge

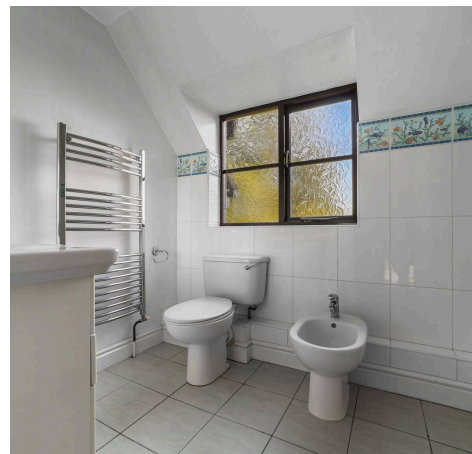
A spacious five bedroom detached family home offering versatile accommodation, ample parking, a garage, and a private wraparound garden, set towards the edge of Woodbridge. Offered for sale with no onward chain. This property requires updating and modernising but presents an excellent opportunity to create a long term family home or strong investment.

The property sits on a generous plot and provides well proportioned living space throughout. It benefits from gas central heating, double glazing, and a practical layout that lends itself well to improvement and reconfiguration if desired.

The ground floor comprises a welcoming entrance hall with built-in storage, a large dual aspect lounge with patio doors opening onto the garden, and a separate dining room ideal for family living or entertaining. The kitchen includes a range of wall and base units with integrated oven and hob and space for appliances. A useful utility room provides external access, and there is a ground floor cloakroom.

Upstairs, the principal bedroom includes an ensuite shower room. There are four further double bedrooms, all offering good natural light and space. The family bathroom is fitted with a bath and shower over, basin, WC, and bidet, with tiled walls and flooring.

Outside, the property is approached via a shared access driveway leading to off-road parking for three to four vehicles and an integral



113 Ipswich Road

Woodbridge, Woodbridge

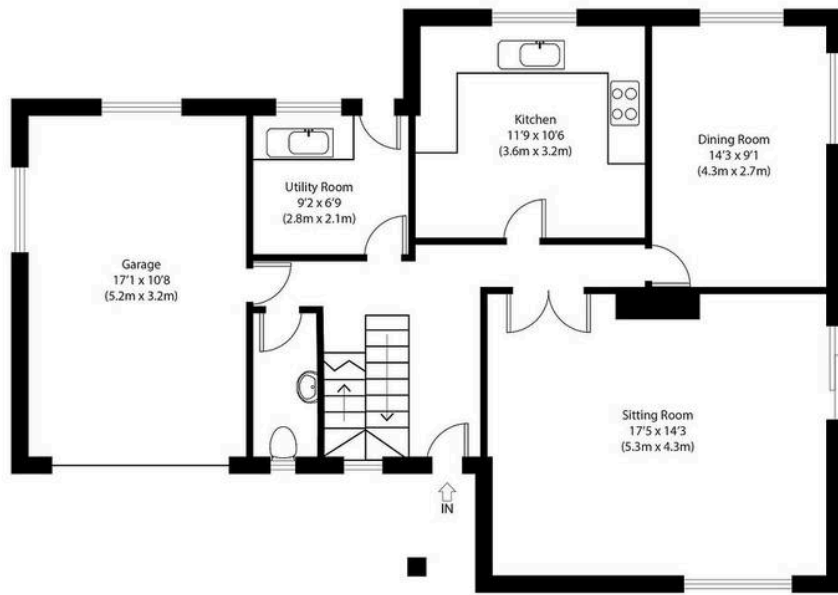
Council Tax band: F

Tenure: Freehold

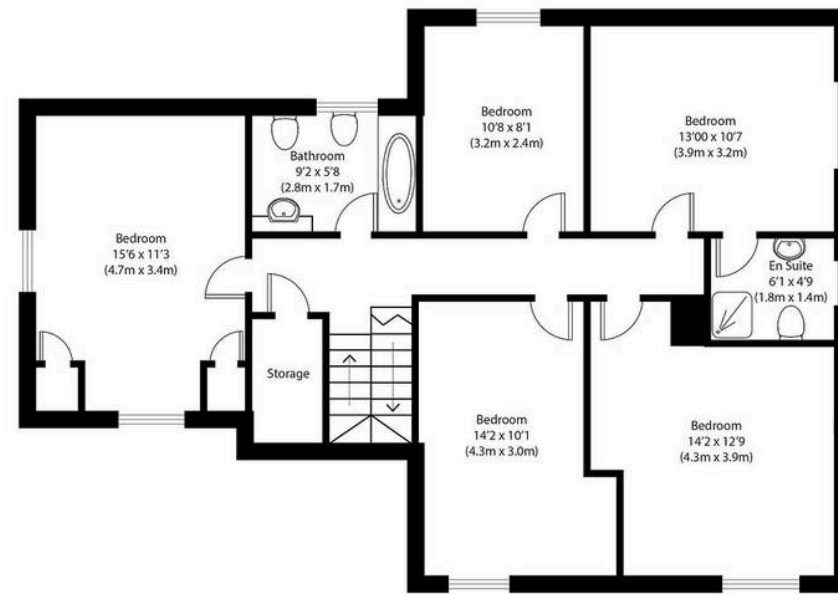
- Sold with no onward chain
- Large Sitting Room with Open Fire
- Master bedroom with ensuite
- Four further bedrooms
- Cloakroom and utility room
- Large mature garden
- Parking and single garage
- Located on South side of Woodbridge







Ground Floor



First Floor



Approximate Gross Internal Area 1940 sq ft (180 sq m)

Disclaimer: Floorplan measurements are approximate and are for illustrative purposes only. While we do not doubt the floor plan accuracy and completeness, you or your advisors should conduct a careful, independent investigation of the property in respect of monetary valuation.
copyright www.photohausgroup.co.uk





Potters Estate Agents

Potters Estate Agents, 6 Market Hill - IP12 4LU

01394 447487

enquiries@pottersestateagents.com

www.pottersestateagents.com/