



8 Berkeley Road North, Coventry - CV5 6NX

In Excess of £355,000

Williams  
BINCH  
MILNER



# 8 Berkeley Road North

Coventry, Coventry

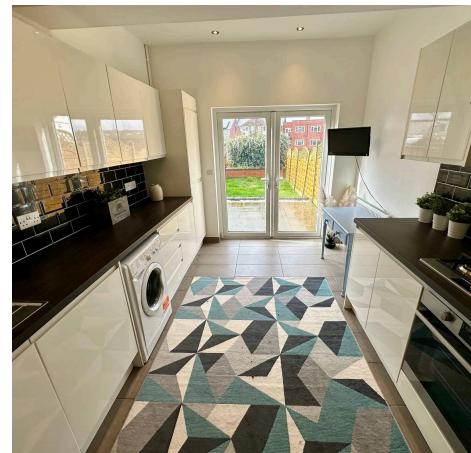
**An Outstanding Traditional Bayed Home – Set In  
The Heart Of Earlsdon – 3 Bedrooms – Family  
Bathroom – Lovely Lounge – Dining Room – SUPERB  
KITCHEN / DINER – Delightful Rear Garden – Gas  
Central Heating – UPVC Double Glazing – NO CHAIN –  
Call Today 02476 011400  
Council Tax band: C**

**Tenure: Freehold**

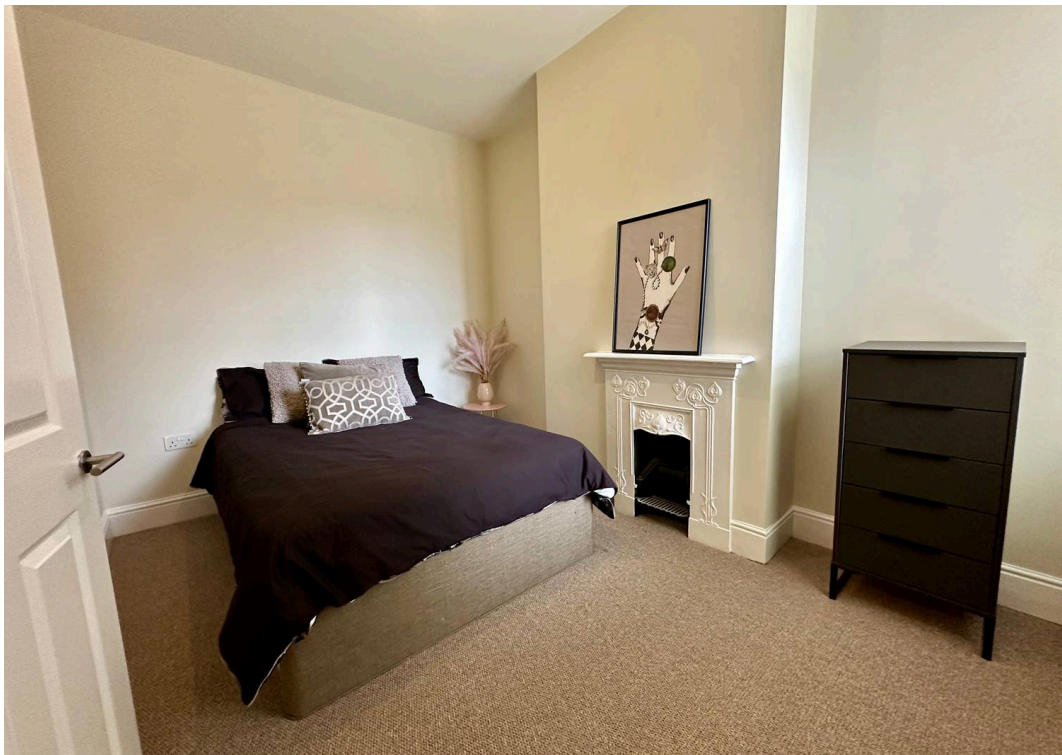
**EPC Energy Efficiency Rating: D**

**EPC Environmental Impact Rating: D**

- **Traditional Double Bayed Terraced Home**
- **3 Generous Bedrooms**
- **Lovely Lounge**
- **Dining Room**
- **Superb Kitchen / Diner**
- **Family bathroom**
- **Gardens To Front & Rear**
- **Gas Central Heating – Double Glazing**
- **Walking Distance To Earlsdon High Street**
- **No Chain – EPC C**

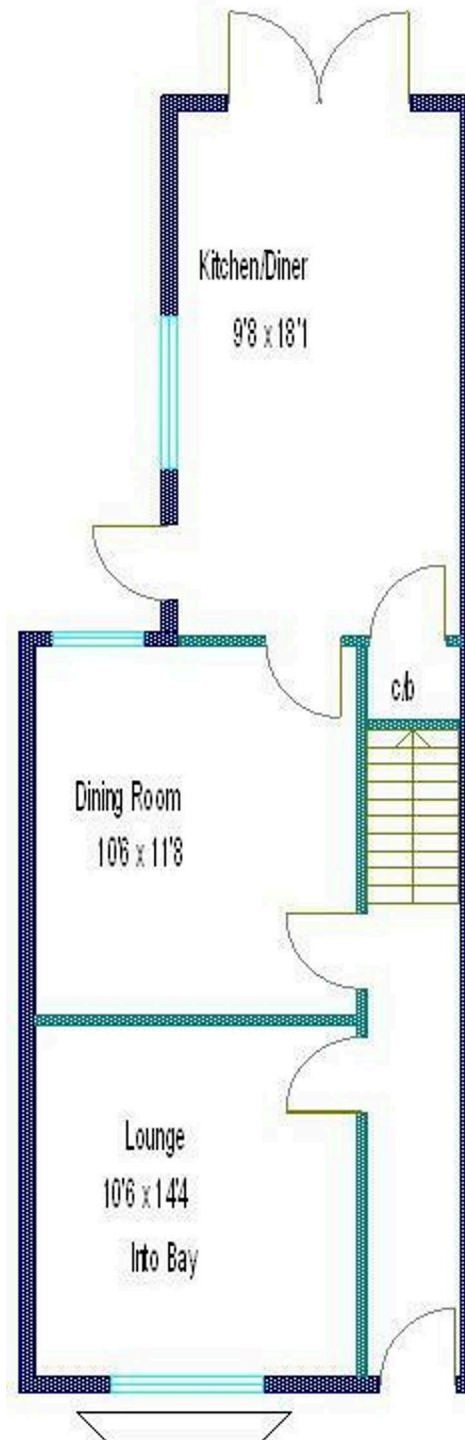








Ground Floor



First Floor

