



HW

ESTATE AGENTS

New Church Road, Hove
Guide Price £1,000,000 - £1,250,000



192 New Church Road

Hove

Spacious five-bedroom detached home with period charm, modern kitchen, two bathrooms, large garden, off-road parking, and great location near amenities. Ideal for families or professionals.

Council Tax band: F

Tenure: Freehold

EPC Energy Efficiency Rating: C

EPC Environmental Impact Rating: D

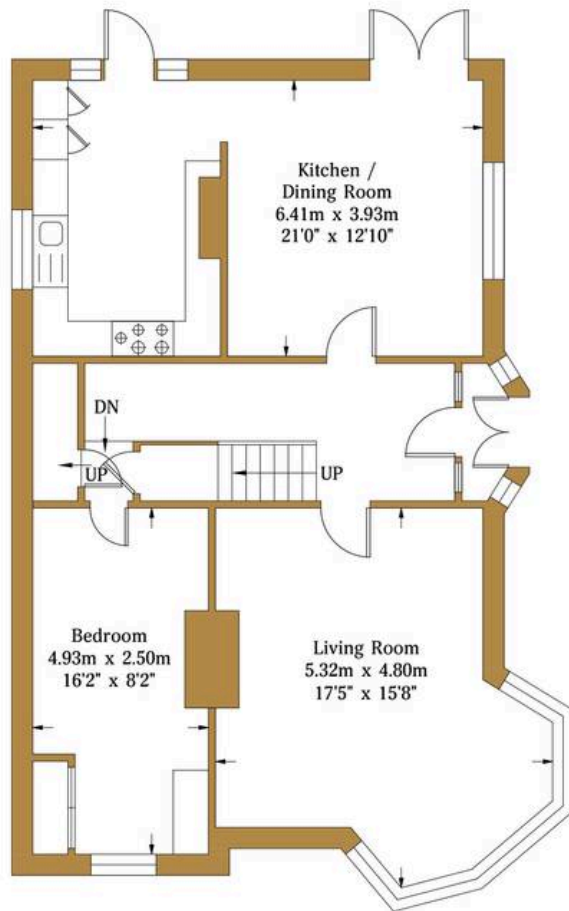
- GUIDE PRICE £1,000,000 - £1,250,000
- Chain Free
- Spacious garden
- Off-road parking
- Modern kitchen with granite countertops
- Integrated appliances
- Garden access via French doors
- Bay windows
- Feature fireplace
- Modern bathrooms



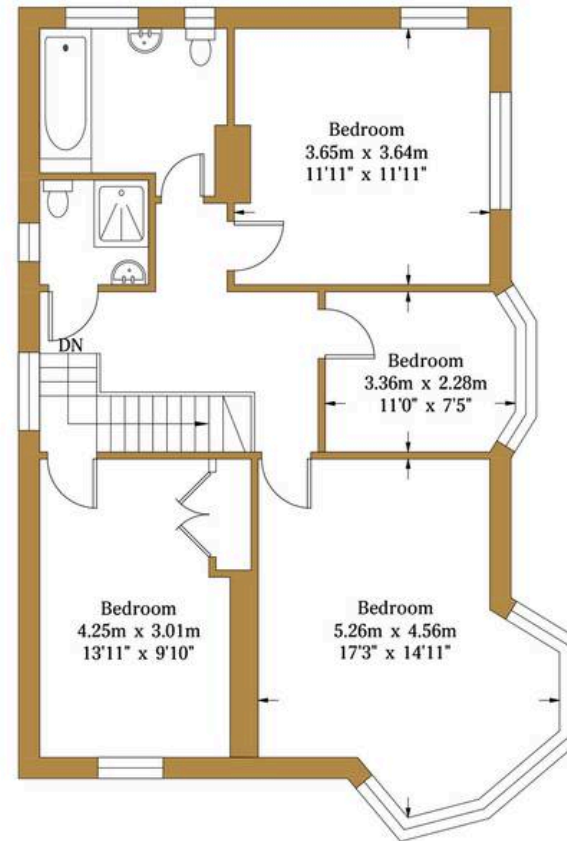


New Church Road

Approx. Gross Internal Area:- 145.34 sq.m. 1564.42 sq.ft.



Ground Floor
Approximate Floor Area
782.21 sq ft
(72.67 sq m)



First Floor
Approximate Floor Area
782.21 sq ft
(72.67 sq m)



Illustration for identification purposes only, measurements are approximate, not to scale.



HW Estate Agents

HW Estate Agents, 80 Goldstone Villas, Hove - BN3 3RU

01273 359000 · hove@hwestateagents.co.uk · www.hwestateagents.co.uk

HW

ESTATE AGENTS