



1 Gothic Close, Nottingham - NG6 0NU

Guide Price £210,000

DavidJames
the estate agent



1 Gothic Close

Nottingham, Nottingham

NO CHAIN! 3 bedroom semi-detached home within easy reach of amenities, Nottingham City Hospital and the Ring Road - ideal for first-time buyers, growing families and professionals seeking convenience!

Council Tax band: B

Tenure: Freehold

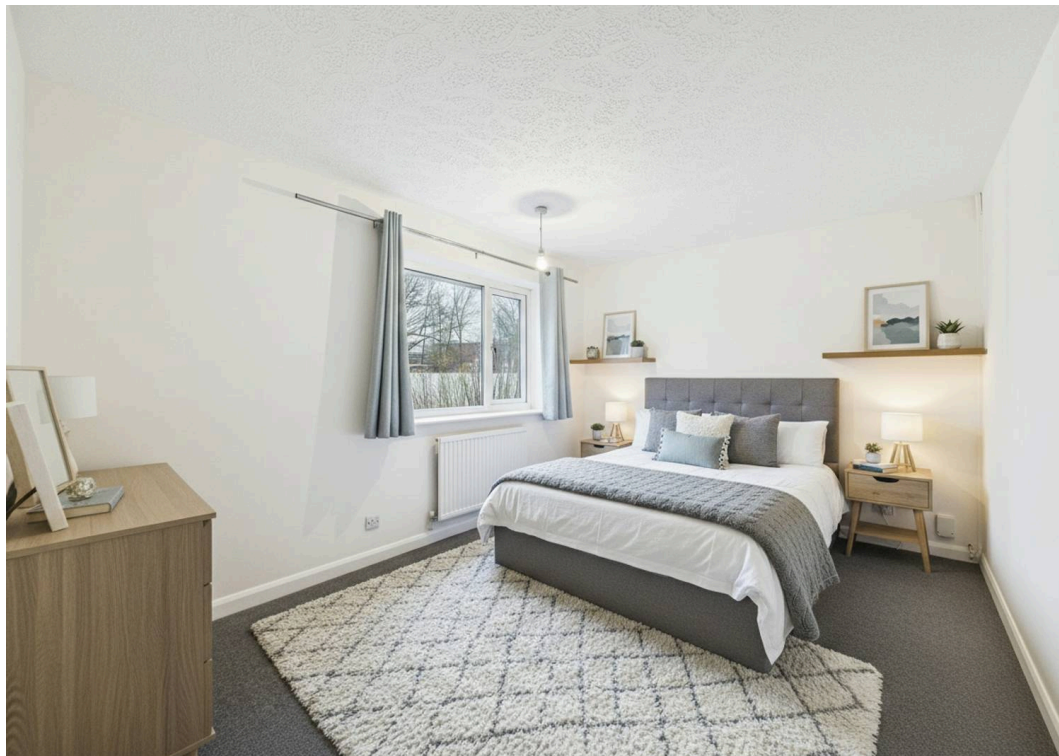
EPC Energy Efficiency Rating: D

EPC Environmental Impact Rating: D

- Semi-detached home in a cul-de-sac
- Available with no upward chain
- Within easy reach of local amenities, transport links, Nottingham City Hospital and the Ring Road
- Ideal for first-time buyers, growing families and professionals
- Well-proportioned front-facing lounge with grey carpet
- Modern kitchen with a range of fitted units, integrated cooking appliances and dining space
- Well-appointed bathroom three-piece bathroom with an electric shower
- Three versatile bedrooms (including two double bedrooms)
- Low-maintenance rear garden with lawn and patio seating space
- Off-street parking for multiple vehicles

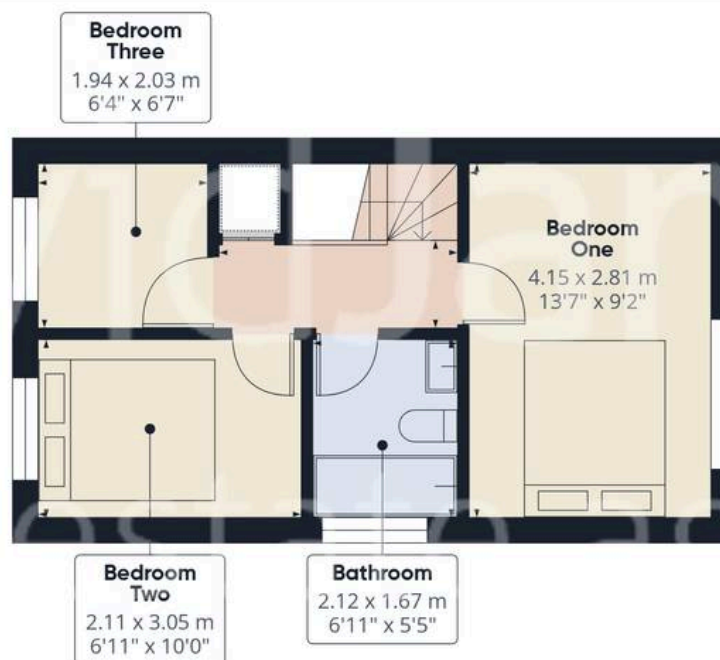








Floor 0



Floor 1



Approximate total area⁽¹⁾

60.3 m²

649 ft²

Reduced headroom

0.9 m²

10 ft²

(1) Excluding balconies and terraces

Reduced headroom

Below 1.5 m/5 ft

Calculations reference the RICS IPMS 3C standard. Measurements are approximate and not to scale. This floor plan is intended for illustration only.

GIRAFFE360



David James Estate Agents

98-100 Front Street, Arnold - NG5 7EJ

0115 955 5550 • arnold@david-james.com • www.david-james.com

These particulars are produced in good faith and are set out as a general guide only. Measurements are approximate and floor plans are for illustrative purposes only. Services have not been tested. We have established professional relationships with third-party suppliers for the provision of services to Clients, details of which can be found on the property listing page on our website.