



120 Alexander Close, Abingdon OX14 1XD

120 Alexander Close

Impressive and thoughtfully extended detached family home offering superbly presented accommodation throughout, set within a desirable North Abingdon location close to nearby amenities.

Alexander Close is a sought-after area of North Abingdon, with easy pedestrian access to many local facilities, including the popular Long Furlong and Dunmore Primary Schools, and Fitzharrys Secondary School. There is also convenient access to the A34, providing excellent routes both north and south, including to Oxford city centre (approximately 6 miles).

Bedrooms: 3

Bathrooms: 2

Reception Rooms: 2

Council Tax Band: D

Tenure: Freehold

EPC: D





Key Features

- Inviting entrance hall with internal doors to the insulated, converted integral garage (boot room/utility area) and to the extended family dining room
- Spacious rear living room featuring sliding doors opening directly onto the well-maintained decked area and rear garden
- Stylishly refitted kitchen with an excellent range of wall and base units, leading through to the conservatory with views over and access to the rear garden
- Extended principal bedroom with en-suite shower room, plus two further generous double bedrooms, complemented by a large family bathroom
- Spacious front garden providing off-street parking for several vehicles
- Landscaped rear garden offering high degree of privacy, with decked family area leading onto patio, raised lawn, and well-stocked flower and shrub borders, enclosed by timber fencing with side access
- Insulated converted integral garage, accessed from the driveway, and incorporating a large wash station with hot and cold running water plus space for a washing machine and tumble dryer
- Electric vehicle charging point and covered bike storage area, accessible from the front of the property.









BRITISH
PROPERTY
AWARDS
2024

GOLD WINNER

ESTATE AGENT
IN ABINGDON



Introducing the Hodsons team...
...trust in our experience!



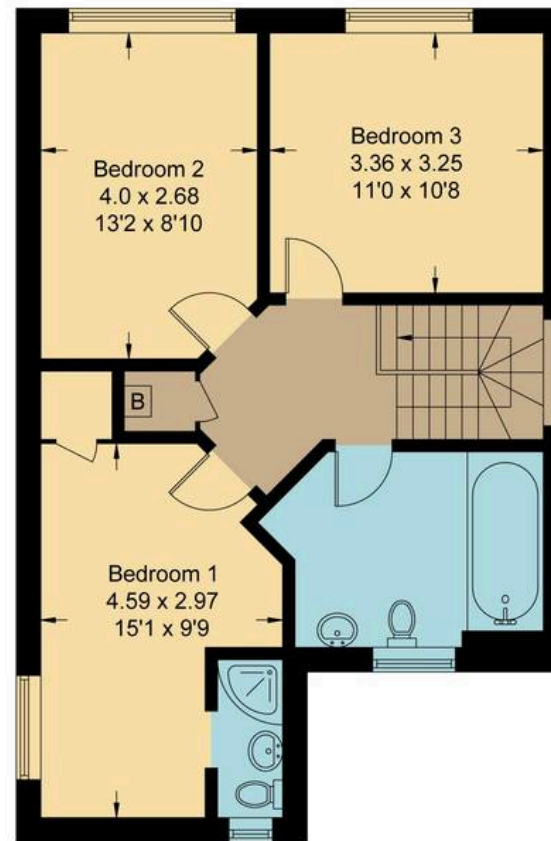
Alexander Close, OX14

Approximate Gross Internal Area = 120.70 sq m / 1299 sq ft

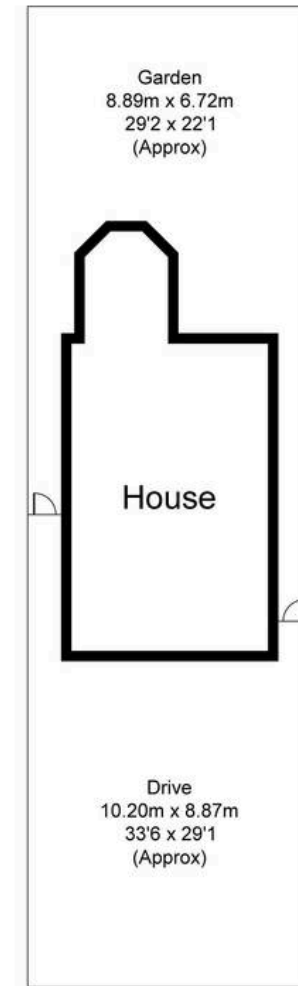
For identification only - Not to scale



Ground Floor



First Floor



Not to scale, for illustration and layout purposes only.
© Mortimer Photography. Produced for Hodsons.
Unauthorised reproduction prohibited



Hodsons
...your move, our passion
Sales | Lettings

5 Ock Street, Abingdon,
Oxfordshire, OX14 5AL
T: 01235 553686
E: abingdon@hodsons.co.uk
www.hodsons.co.uk