



ABBOTTS COURT, EVERSLEY PARK, CHESTER

£1,200 PCM

- AVAILABLE IMMEDIATELY
- REDECORATED THROUGHOUT
- NEW FLOORING
- TWO DOUBLE BEDROOMS
- WITH APPLIANCES
- ALLOCATED PARKING

urbansale&let
property sales and letting



ABBOTTS COURT, EVERSLEY PARK, CHESTER

2
BED

2
BATH

1
RECEPTION

Urban Sale and Let are delighted to offer for let this superb ground floor apartment. Conveniently located for access into the city centre, the property is unfurnished.

The accommodation comprises entrance hallway with storage cupboards, a very spacious lounge which is open plan and incorporates a modern fitted kitchen with integrated oven, hob, dishwasher, washing machine and free-standing fridge/freezer, two double bedrooms both with built in wardrobes, master with en-suite shower room and main bathroom.

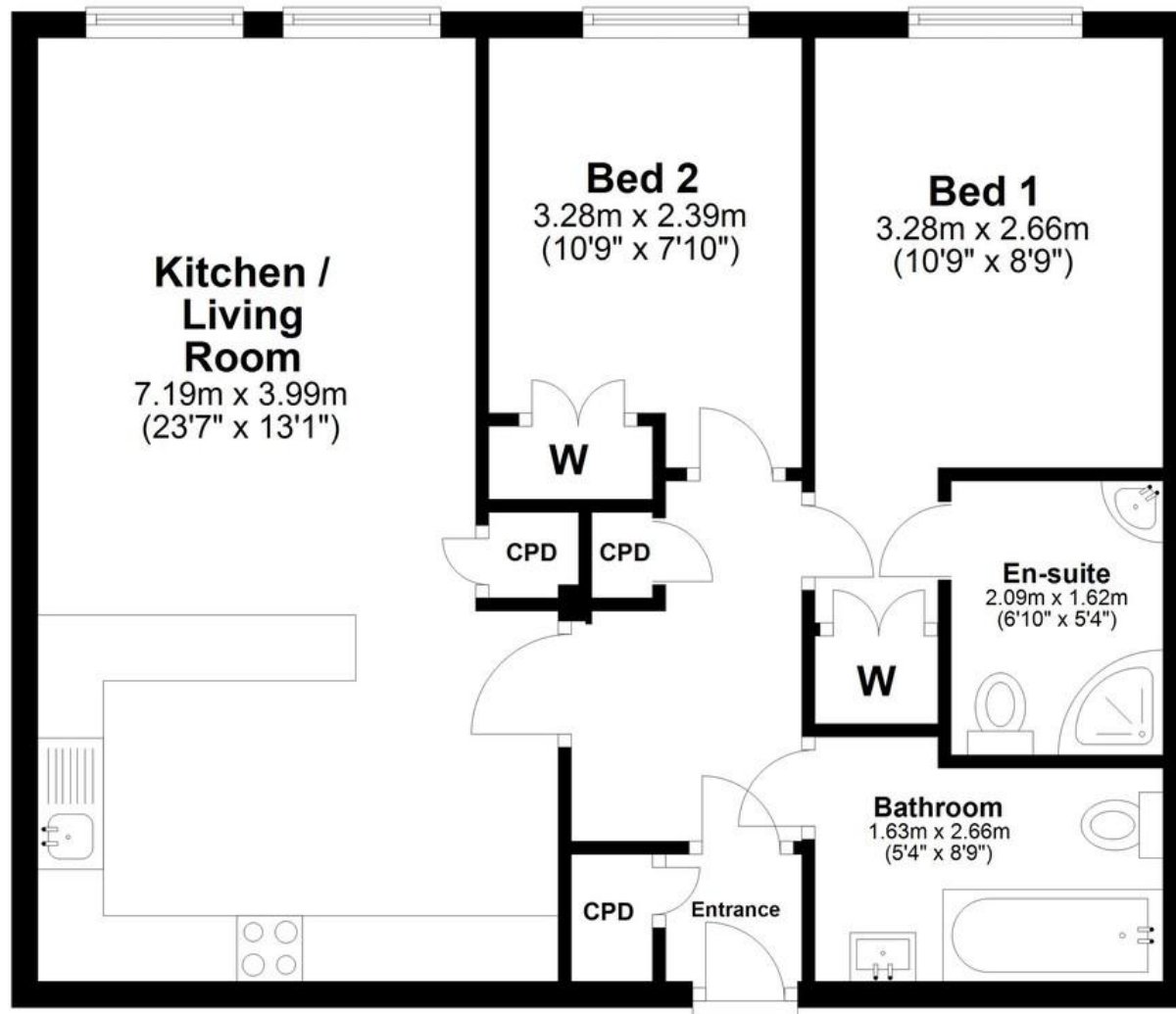
Allocated parking for one car and communal landscaped garden to the rear.

EPC rating C & council tax band C. Sorry, no pets, no smokers.





Apartment



TOTAL FLOOR AREA 601 sq ft / 56 sq m

COUNCIL TAX
Band C

AVAILABLE FROM
Available Now

DEPOSIT
£1,384.61

FURNISH
Unfurnished

EPC

Score	Energy rating	Current	Potential
92+	A		
81-91	B		
69-80	C	79 C	79 C
55-68	D		
39-54	E		
21-38	F		
1-20	G		

OFFICE CONTACT INFO

Urban Sale and Let
19 Charles Street
Hoole
Chester
Cheshire
CH2 3AY

01244 886 636
info@urbansaleandlet.co.uk
www.urbansaleandlet.co.uk

2 Abbots Court Eversley Park