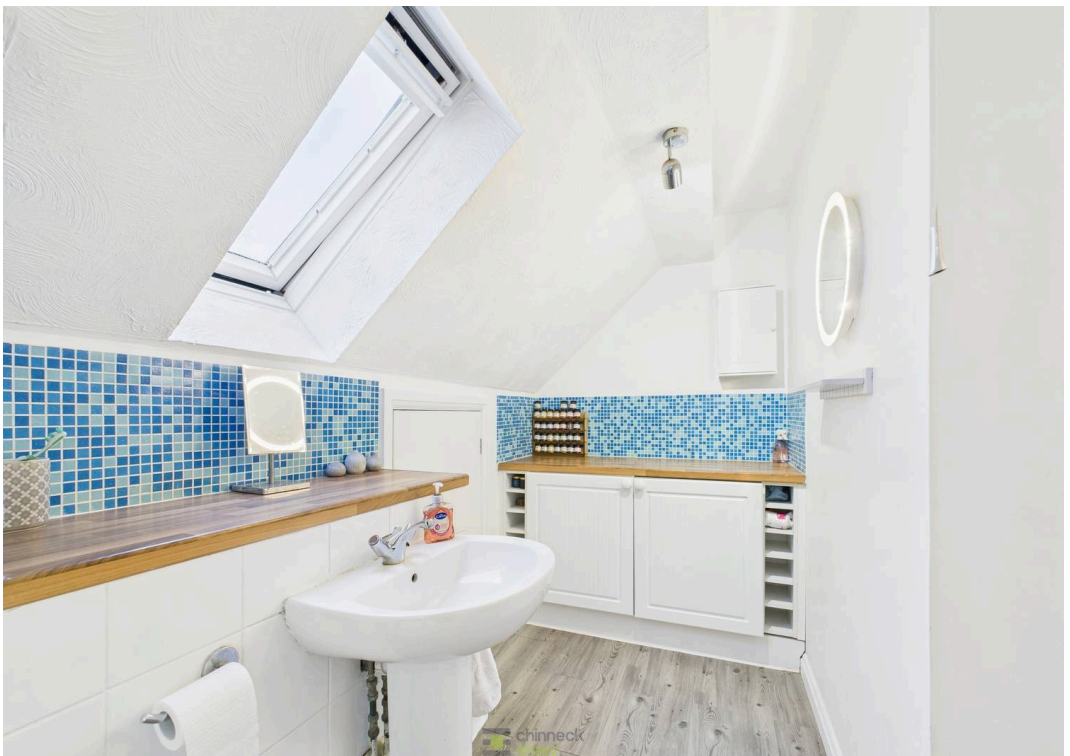
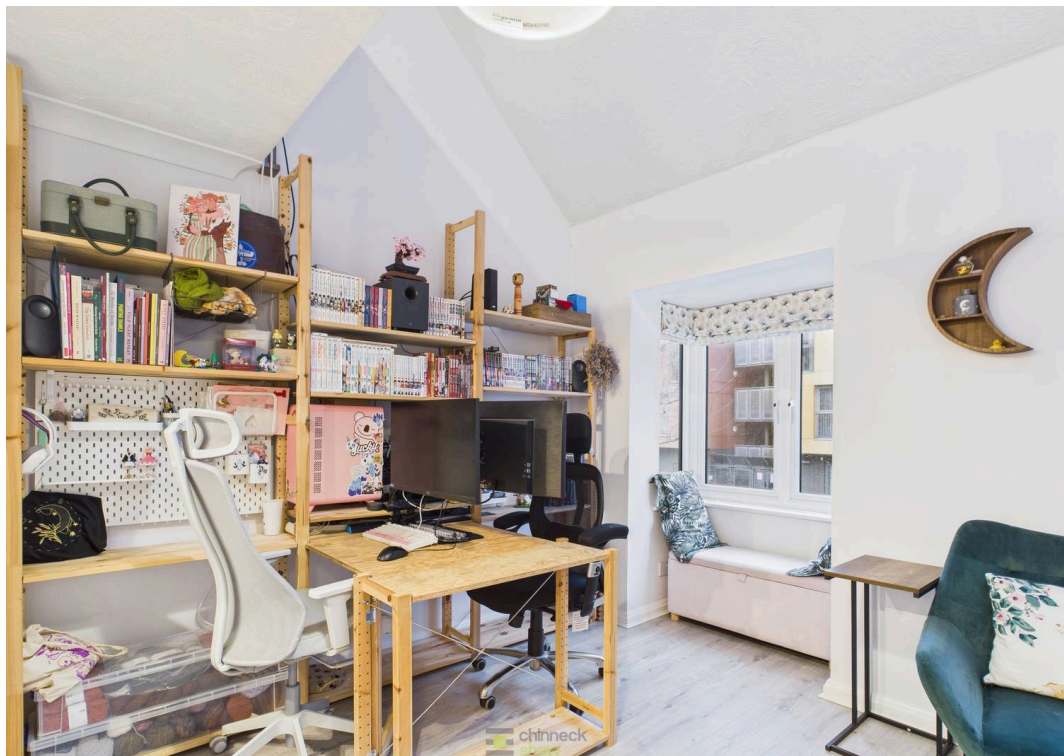




44 Rowan Court, Southsea

Offers in Region of £190,000





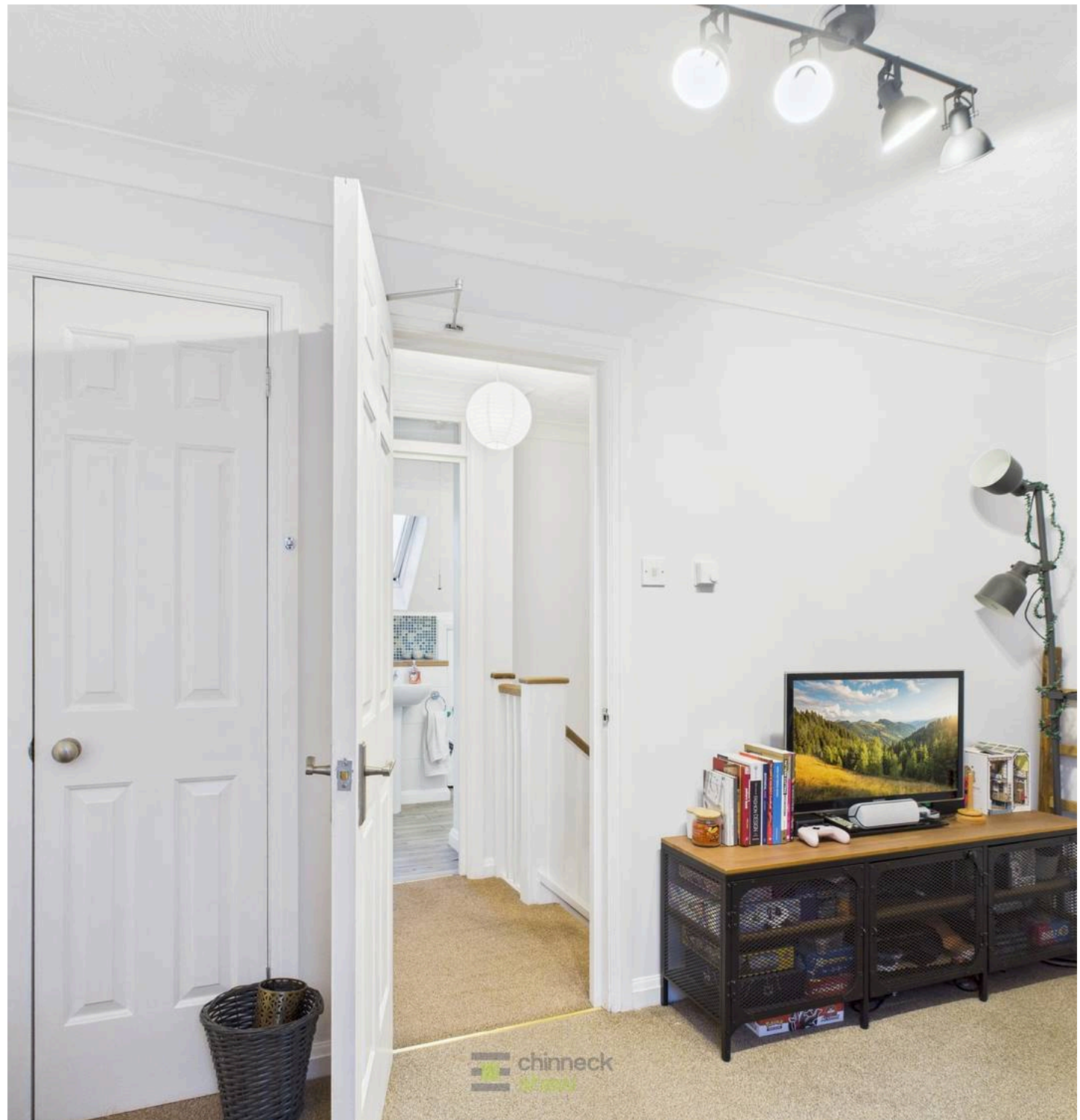
44 Rowan Court

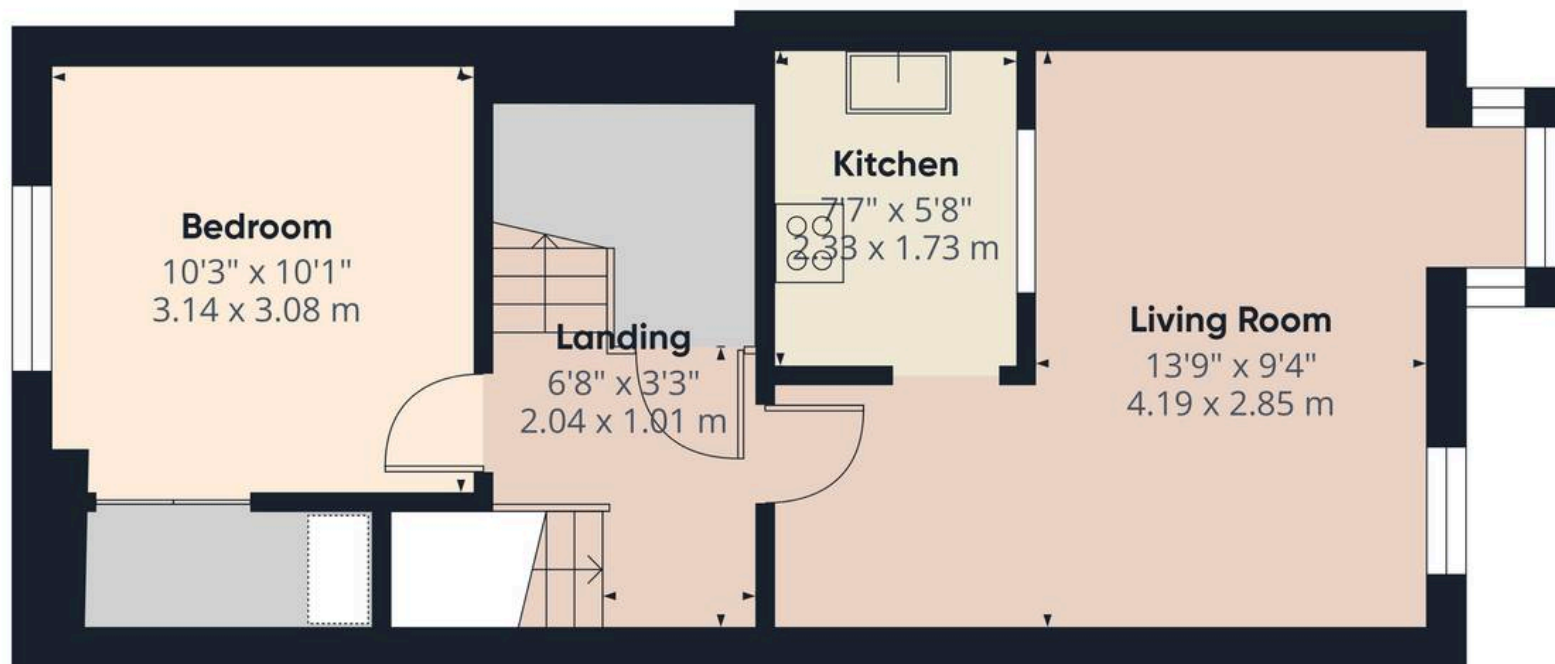
Southsea

Step inside this inviting two-bedroom maisonette and discover a home that blends comfort, style, and practicality across two spacious floors. The open-plan living area is filled with natural light, perfect for relaxing after a busy day or catching up with friends. The modern kitchen features sleek cabinetry, integrated appliances, and ample workspace for both family dinners and quick meals. Both bedrooms are generously sized, offering peaceful retreats with room for wardrobes, desks, or a cosy reading nook. The contemporary bathroom boasts stylish fittings and a clean, fresh feel, ideal for unwinding.

This apartment suits professionals, first-time buyers, or small families, with versatile rooms that can become a home office, guest room, or hobby space. Practical touches like allocated parking and a convenient layout make daily living easy. Located close to Milton Park, major transport links, and local amenities, this home offers everything within reach. It's a welcoming space to relax, entertain, and truly make your own.

Material Information • Tenure: Leasehold • Council Tax: Band B • Electricity: Mains Supply • Heating: Electric • Water Supply and Sewage: Mains Supply • Parking: Allocated • Mobile: Ofcom official website checker states that EE, Vodafone, O2 and Three available in the area • Flood Risk: Low Risk





Ground Floor



Floor 1



Approximate total area⁽¹⁾

642 ft²

59.6 m²

Reduced headroom

3 ft²

0.3 m²

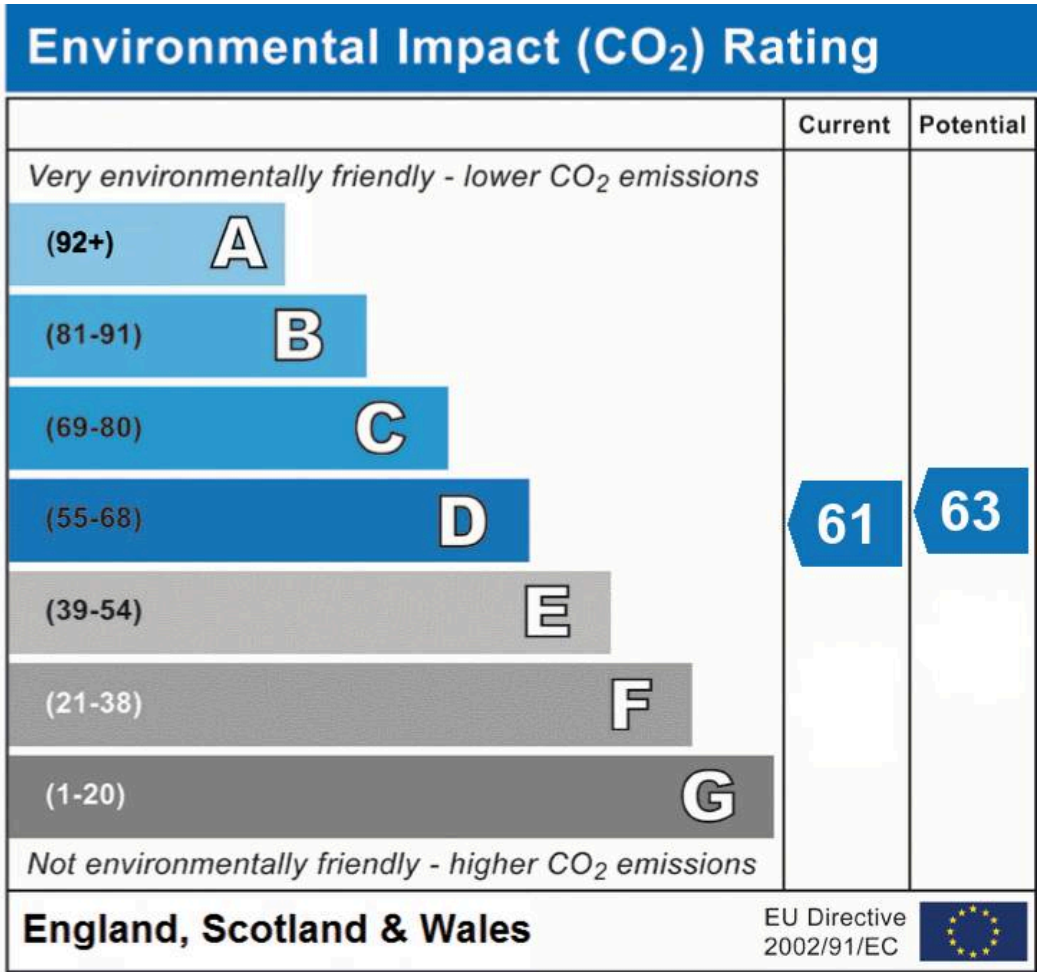
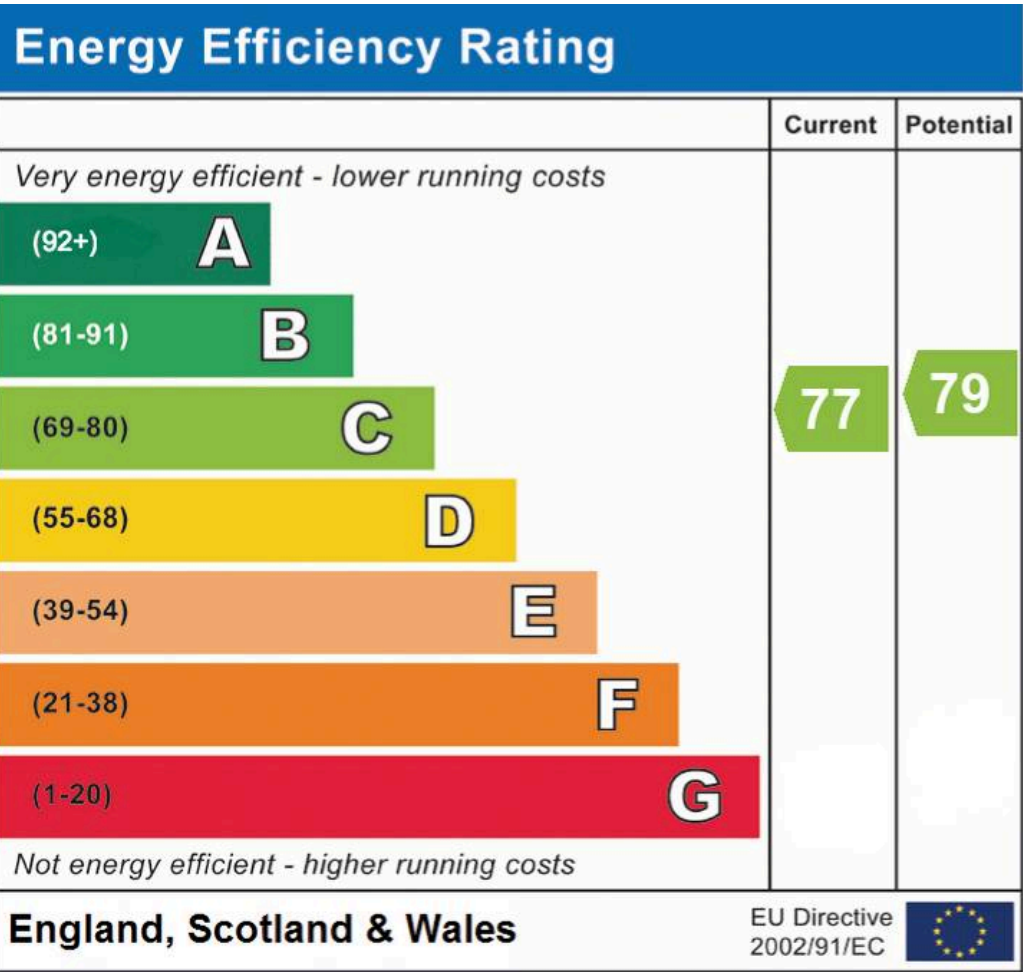
(1) Excluding balconies and terraces

Reduced headroom

Below 5 ft/1.5 m

Calculations reference the RICS IPMS 3C standard. Measurements are approximate and not to scale. This floor plan is intended for illustration only.

GIRAFFE360



Chinneck Shaw
Bridge House, Milton Road, Portsmouth – PO3 6AN
023 9282 6731
hello@chinneckshaw.co.uk
www.chinneckshaw.co.uk/

Chinneck Shaw, Bridge House, Milton Road, PO3 6AN Consumer Protection from Unfair Trading Regulations 2008: These details are for guidance only and complete accuracy cannot be guaranteed. If there is any point which is of particular importance, verification should be obtained. The do not constitute a contract or part of a contract. All measurements are approximate. No guarantee can be given with regard to planning permissions or fitness for purpose. No apparatus, equipment, fixture or fitting has been tested. Items shown in the photographs are NOT necessarily included. Interested Parties are advised to check availability and make an appointment to view before travelling to see a property.