



16 Pavilion Gardens, Skegby, NG17 3LG

Guide Price £360,000



16 Pavilion Gardens

Skegby, Sutton-In-Ashfield

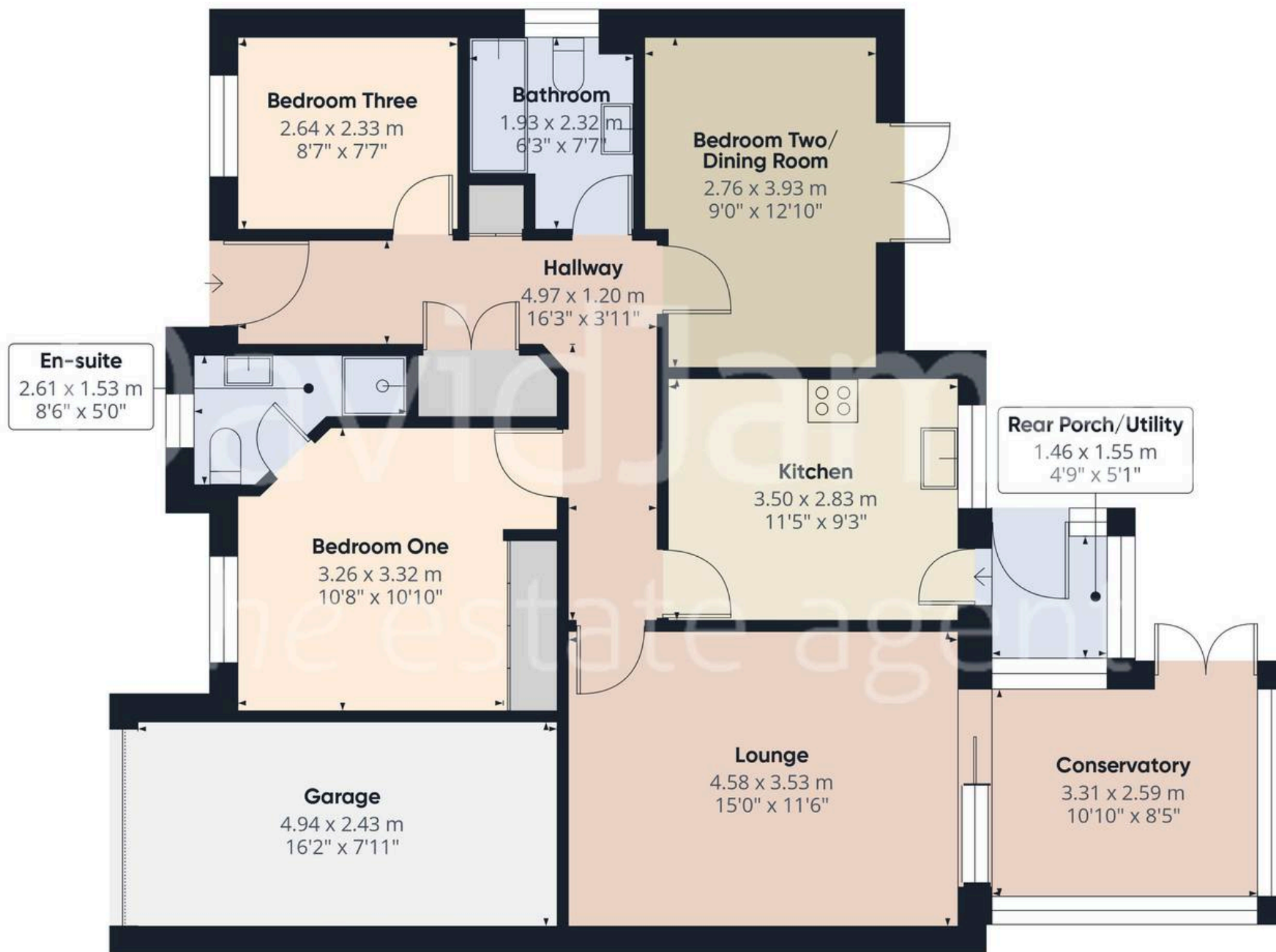
Council Tax band: C

Tenure: Freehold

- Well presented detached bungalow sold with no upward chain
- Three bedrooms, bedroom two currently being used as a dining room with French doors to the rear garden
- L-shaped entrance hall with storage cupboards
- Lounge with fireplace and gas fire and patio doors leading to the conservatory
- Conservatory with tiled flooring, power and heating as well as French doors to the rear garden
- Kitchen with oak panelled units as well as an integrated double oven, hob and extractor, rear porch/utility room with work surface and space for appliances
- Bedroom One with fitted wardrobes and en-suite shower room/Wc with mains-fed shower
- Bathroom/Wc with shower provided by mixer taps, gas central heating, UPVC double glazing
- Double width driveway provides parking for two vehicles, garage
- Attractive and enclosed south-easterly facing rear garden with large patio area, additional patio area, lawn and borders







Approximate total area⁽¹⁾

97 m²
1044 ft²

(1) Excluding balconies and terraces

Calculations reference the RICS IPMS 3C standard. Measurements are approximate and not to scale. This floor plan is intended for illustration only.

GIRAFFE360





David James Estate Agents

43 Forest Street, Sutton-in-Ashfield - NG17 1DA

01623 554084 • sutton@david-james.com • www.david-james.com