



**33 Ethelfleda Road, Hockley**

Offers Over **£275,000**





Council Tax band: TBD

Tenure: Freehold

- PROUDLY PRESENTED FOR SALE WITH NEXT PLACE PROPERTY AGENTS
- 3 BEDROOM SEMI DETACHED PROPERTY
- OFF ROAD PARKING FOR MULTIPLE VEHICLES
- SPACIOUS LOUNGE DINING AREA
- AMAZING LANDSCAPED GARDEN
- POPULAR HOCKLEY LOCATION



**Lounge / Dining Room**

10' 6" x 25' 11" (3.20m x 7.91m)

**Kitchen**

16' 10" x 8' 0" (5.12m x 2.45m)

**Bedroom**

10' 10" x 11' 7" (3.29m x 3.54m)

**Bedroom**

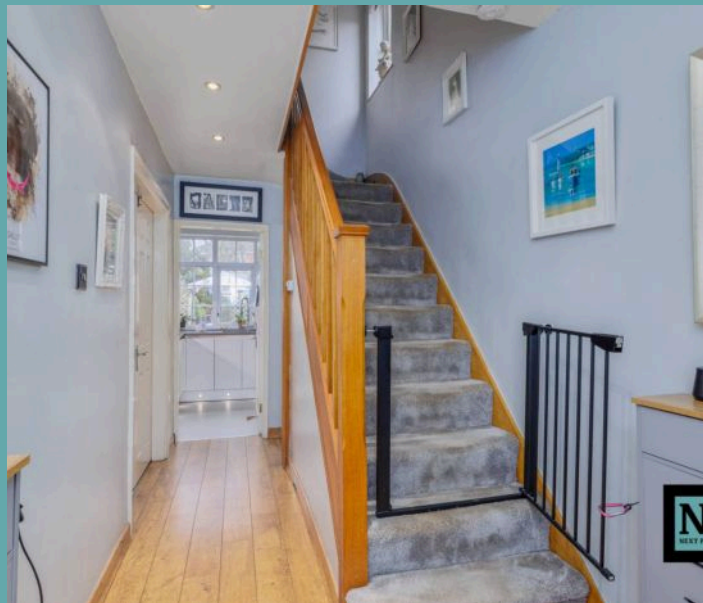
10' 8" x 10' 8" (3.25m x 3.25m)

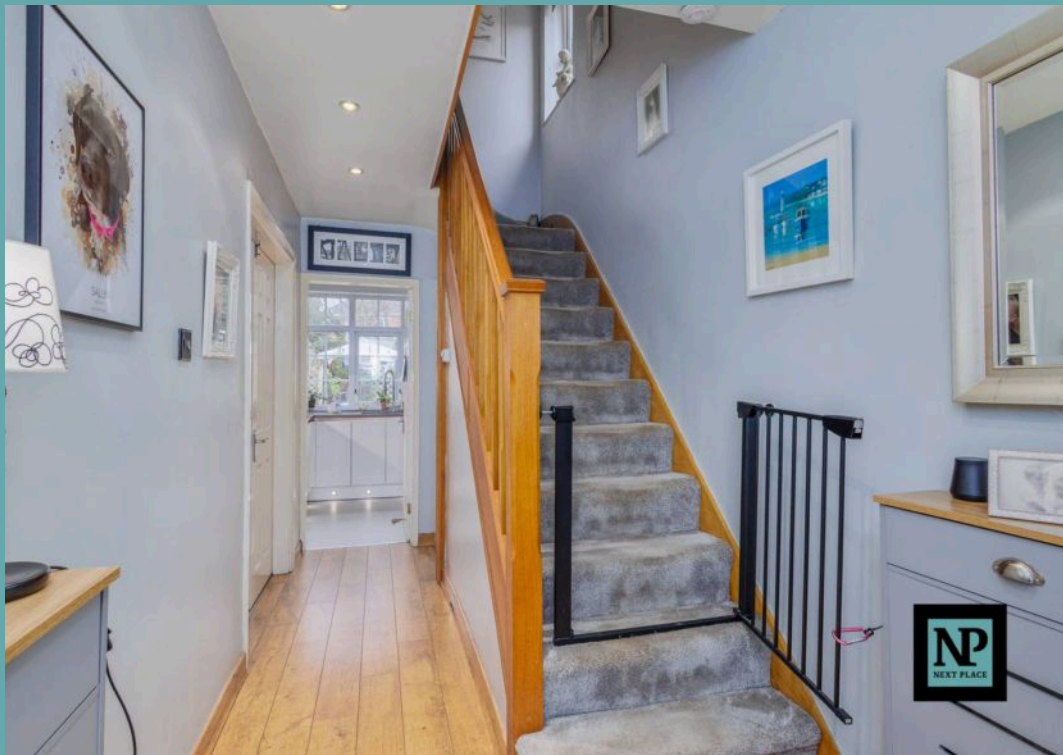
**Bedroom**

5' 8" x 8' 0" (1.72m x 2.43m)

**Bathroom**

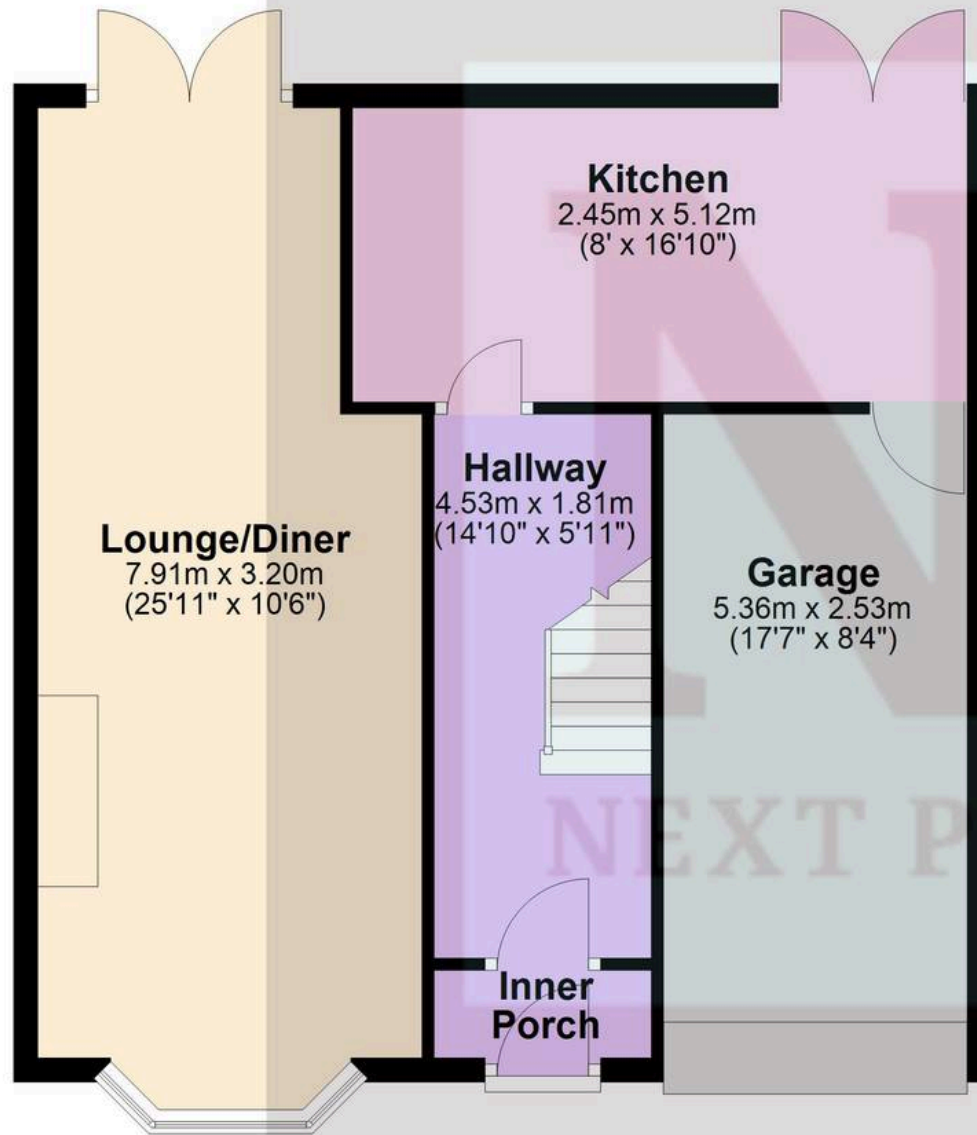
5' 11" x 7' 7" (1.81m x 2.30m)





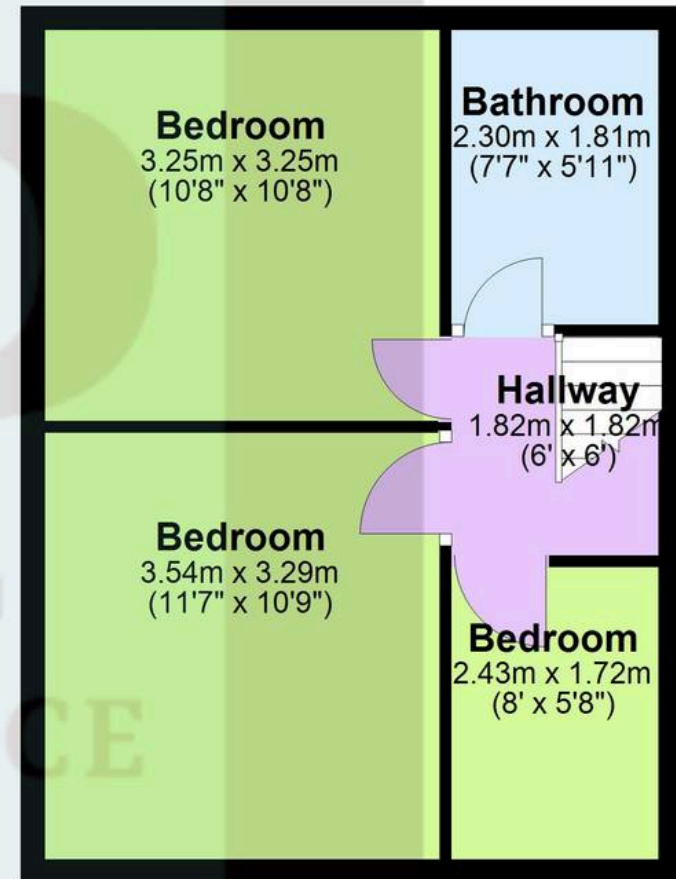
## Ground Floor

Approx. 61.5 sq. metres (661.8 sq. feet)



## First Floor

Approx. 35.2 sq. metres (379.2 sq. feet)



Total area: approx. 96.7 sq. metres (1041.0 sq. feet)

illustration purposes only  
Plan produced using PlanUp.



## Next Place

Next Place Property Agents Ltd, 112 Glascote Road - B77 2AF  
01827 50700 • [info@next-place.co.uk](mailto:info@next-place.co.uk) • [www.next-place.co.uk/](http://www.next-place.co.uk/)

