



32 Higher Road, Longridge  
£185,000

 **Holdens**  
ESTATE AGENTS





## 32 Higher Road

Longridge, Preston

Charming 3-bed mid-terrace cottage in Longridge with cosy living room, dining kitchen, large basement, modern bathroom, rear garden, gas central heating, double glazing. Grade II Listed. No chain.

Council Tax band: C

Tenure: Freehold

EPC Energy Efficiency Rating: D

EPC Environmental Impact Rating: D

- Mid terraced cottage
- Living room with wood burner
- Dining kitchen with doors to rear garden
- Large basement room
- Three bedrooms
- Bathroom
- Gas central heating, double glazed
- External staircase to rear garden
- Super views
- EPC Rating D



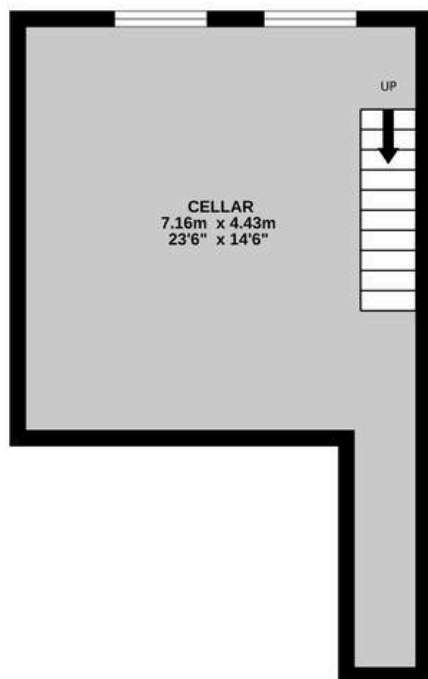




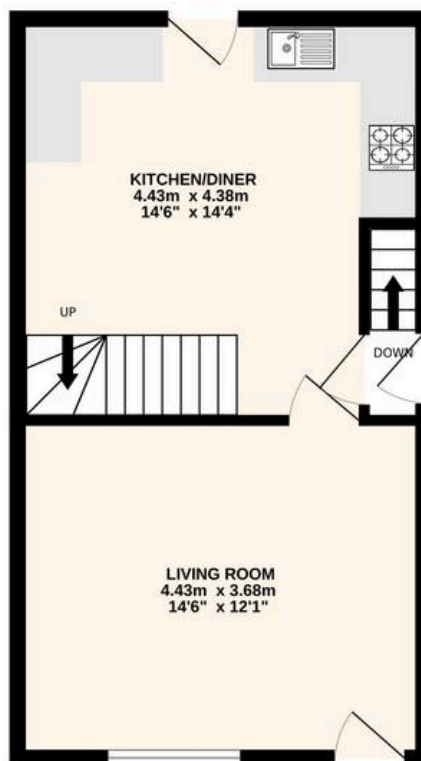




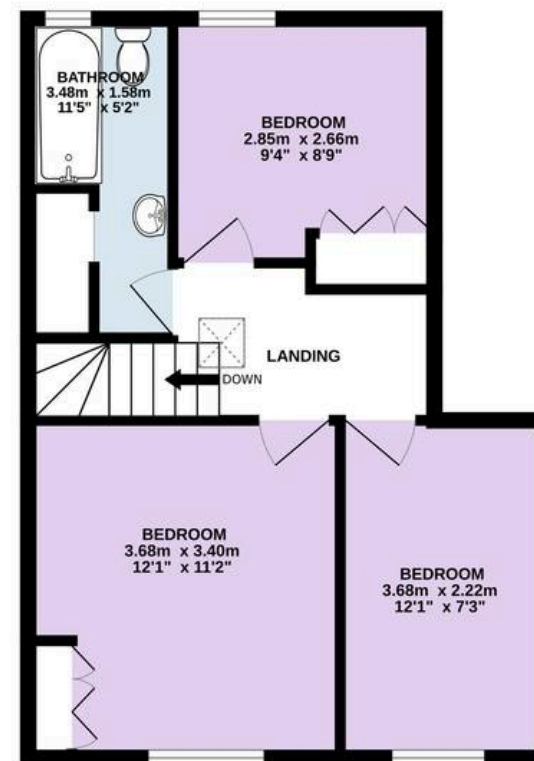
**BASEMENT**  
22.4 sq.m. (242 sq.ft.) approx.



**GROUND FLOOR**  
35.7 sq.m. (384 sq.ft.) approx.



**1ST FLOOR**  
40.1 sq.m. (432 sq.ft.) approx.



**TOTAL FLOOR AREA : 98.2 sq.m. (1057 sq.ft.) approx.**

Every attempt is made to ensure accuracy, however all measurements are approximate. This plan is for illustrative purposes only and is not to scale.  
Made with Metropix ©2025





## Holdens Longridge

66 Derby Road, Longridge – PR3 3FE

01772 233380

[longridge@holdens.co.uk](mailto:longridge@holdens.co.uk)

[www.holdens.co.uk/](http://www.holdens.co.uk/)

Disclaimer: All information such as plans, dimensions, and details about the property's condition or suitability is provided in good faith and believed to be accurate, but should not be relied upon without independent verification. Buyers or tenants must carry out their own checks. Appliances and systems (e.g. electrics, plumbing, heating) haven't been tested. It's strongly advised to get professional inspections before making any commitments. No employee or agent of Holdens Estate Agents is authorised to make promises or guarantees about the property. These details are for general guidance only and do not form part of any contract. If the property is leasehold, buyers should carefully review the lease terms. All discussions with Holdens Estate Agents are subject to contract.