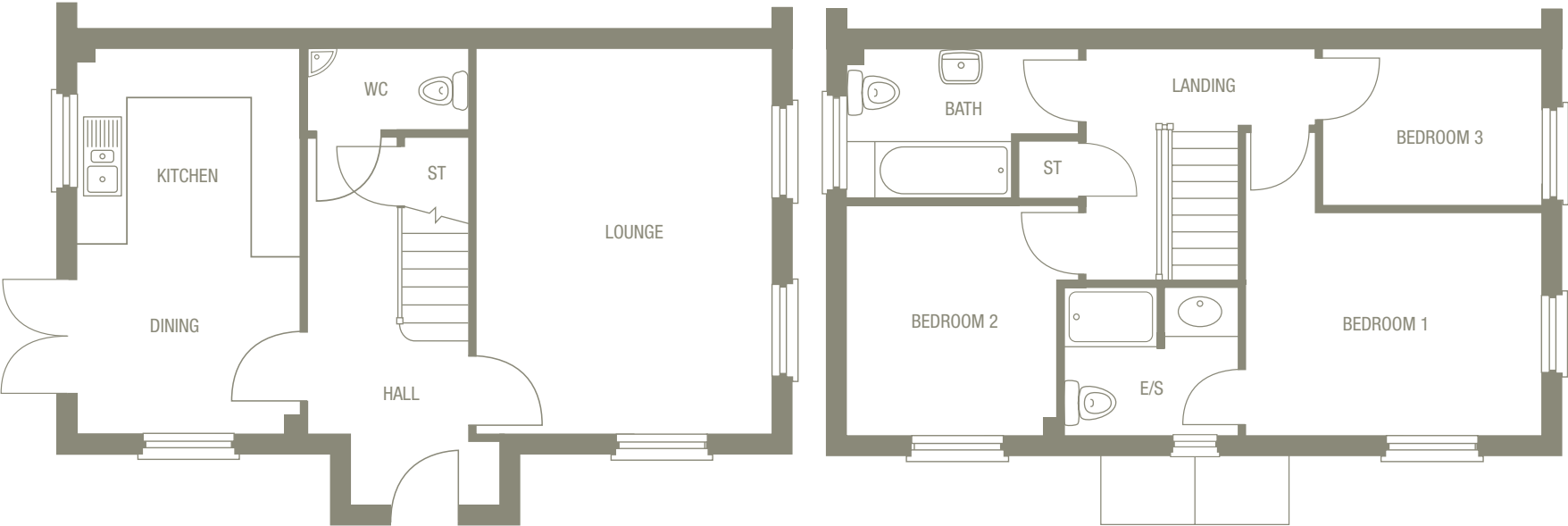


# The Capesthorpe

3 bedroom mews house.



Stylish and spacious, The Capesthorpe is an impressive 3-bedroom home created with today's lifestyles in mind. With its open-plan kitchen/dining room and a principal bedroom with its own elegant en-suite, the Capesthorpe has an interior thoughtfully designed to create a warm & welcoming home to be proud of.



Ground Floor

Room	Size	
Lounge	4825 x 3725mm	15'10" x 12'3"
Dining/Kitchen	4825 x 2780mm	15'10" x 9'1"
Cloaks/WC	1010 x 1995mm	3'4" x 6'7"

First Floor

Room	Size	
Bedroom 1	3835* x 3790*mm	12'7"* x 12'5"*
En-suite	1825 x 2185mm	6'0" x 7'2"
Bedroom 2	2875* x 2910*mm	9'5"* x 9'7"*
Bedroom 3	1965 x 2755mm	6'5" x 9'0"
Bathroom	1860* x 2910*mm	6'1"* x 9'7"*

947 total sq ft

\*Denotes maximum room dimensions.  
This is a computer generated image of The Capesthorpe, elevation treatment may vary. All internal images are indicative of a Morris house type. Room sizes are approximate. Plots may be handed and any garages may be single or double. Kitchen and bathroom layouts are indicative. These plans are correct at time of going to press, but may be subject to change during construction. Please ensure that you check for specific plot details.

