

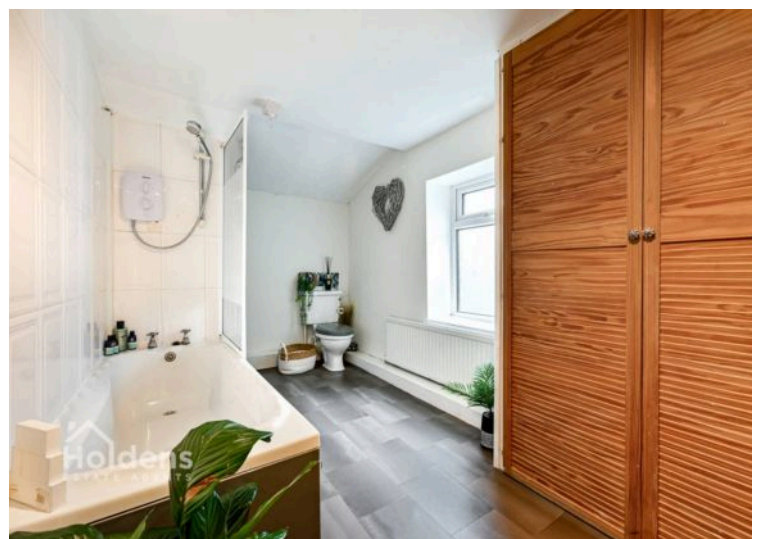
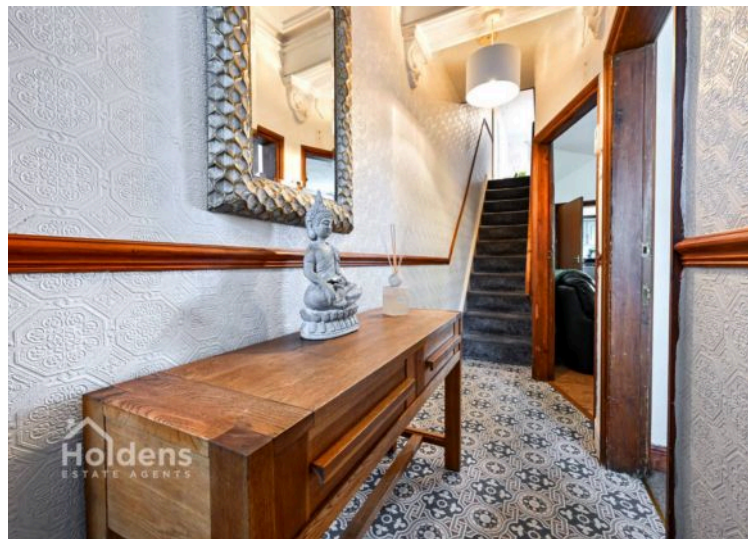


17 Berry Lane, Longridge

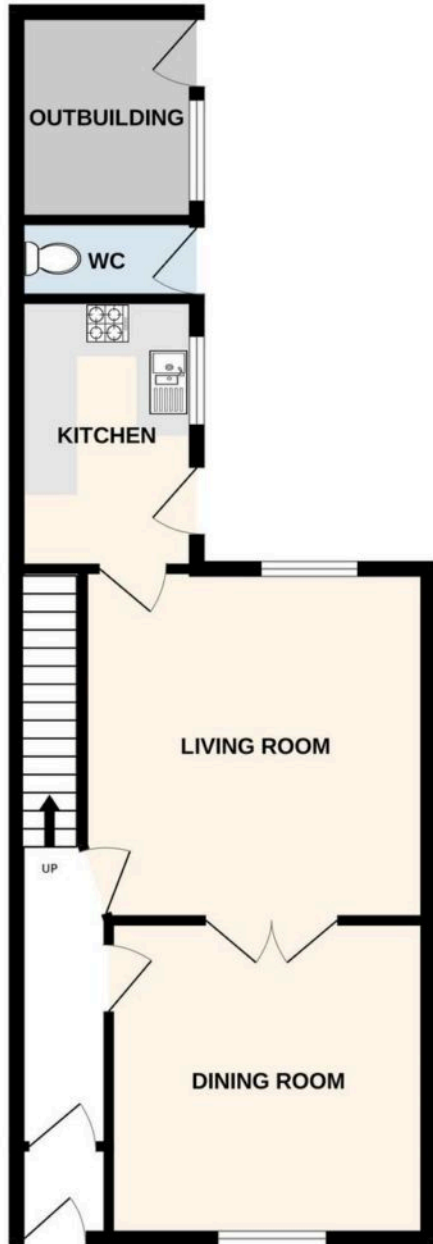
£159,950 Freehold

End Terraced Home • Ideal First Home • 3 Bedrooms • 2 Reception Rooms • Central Location • Private Rear Yard

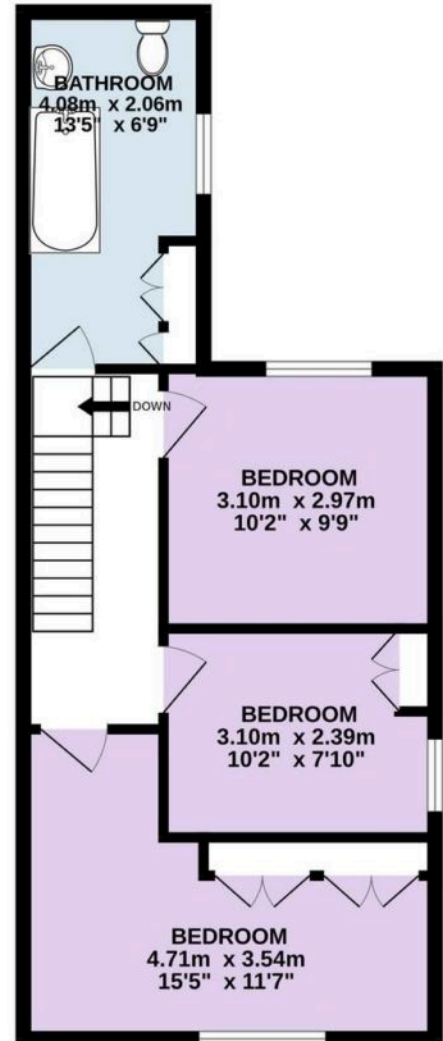




GROUND FLOOR
49.2 sq.m. (529 sq.ft.) approx.



1ST FLOOR
44.4 sq.m. (478 sq.ft.) approx.



TOTAL FLOOR AREA : 93.6 sq.m. (1008 sq.ft.) approx.

Every attempt is made to ensure accuracy, however all measurements are approximate. This plan is for illustrative purposes only and is not to scale.
Made with Metropix ©2026

You can include any text here. The text can be modified upon generating your brochure.