



HILLS

Hopwood Avenue, Eccles
Manchester

In Excess of £280,000

Hopwood Avenue

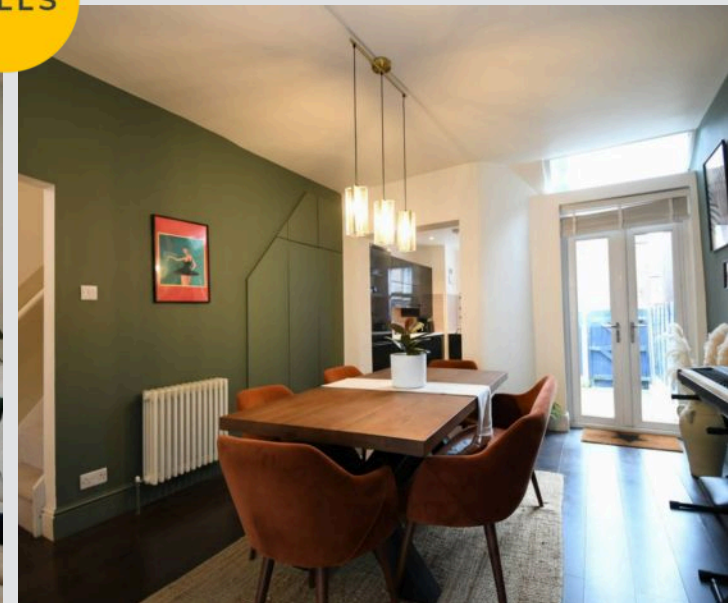
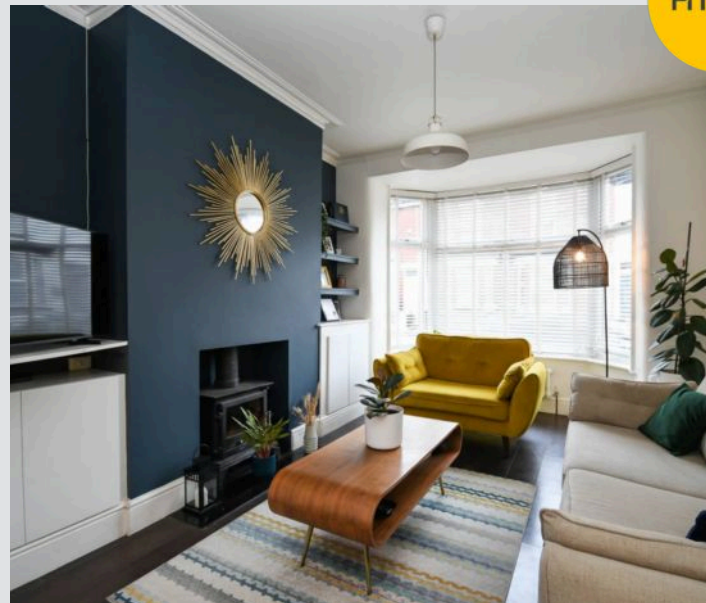
Eccles, Manchester

Stunning two-bed terrace in Monton Village. Open plan living, modern kitchen, luxury bathroom, bay lounge with log burner. Walk to cafes, shops, and transport. Ideal first-time buy.

Council Tax band: A

Tenure: Freehold

- Located on a Quiet Cul De Sac in the Heart of Monton Village
- Presented to a show Home Standard Throughout
- Perfect First Time Buyer Home
- Open Plan Layout to the Ground Floor, with Bay Fronted Lounge and Log Burner
- Sleek Fitted Kitchen with Integrated Appliances
- Stunning Four Piece bathroom Suite with His & Hers Sinks Installed in 2024
- Two Double Bedrooms
- Low Maintenance Gardens to the Front and Rear



HILLS

Entrance Hallway

Reception One

14' 0" x 10' 0" (4.26m x 3.04m)

Reception Two

13' 0" x 11' 0" (3.96m x 3.35m)

Kitchen

11' 0" x 7' 0" (3.35m x 2.13m)

Bedroom One

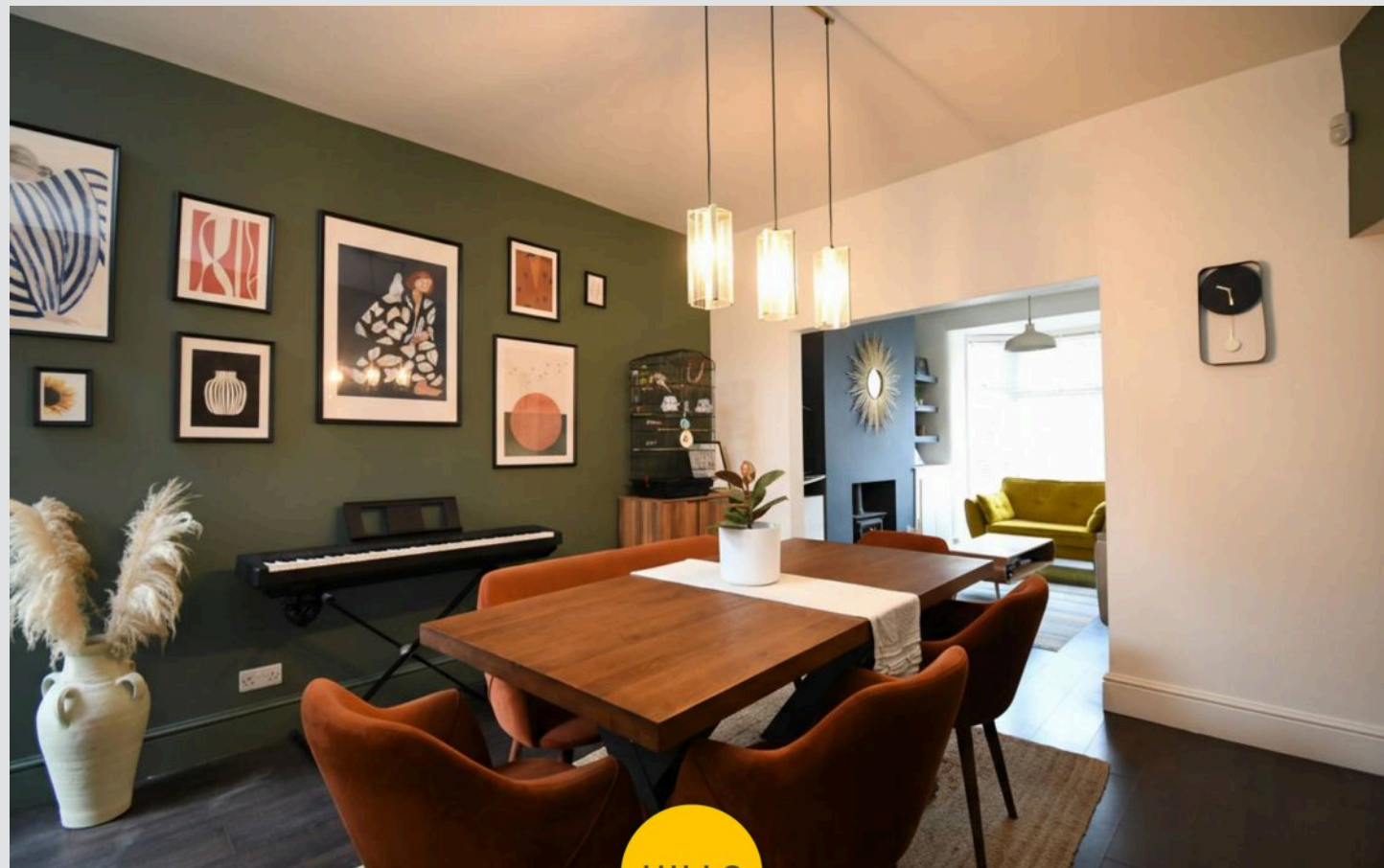
14' 0" x 11' 0" (4.26m x 3.35m)

Bedroom Two

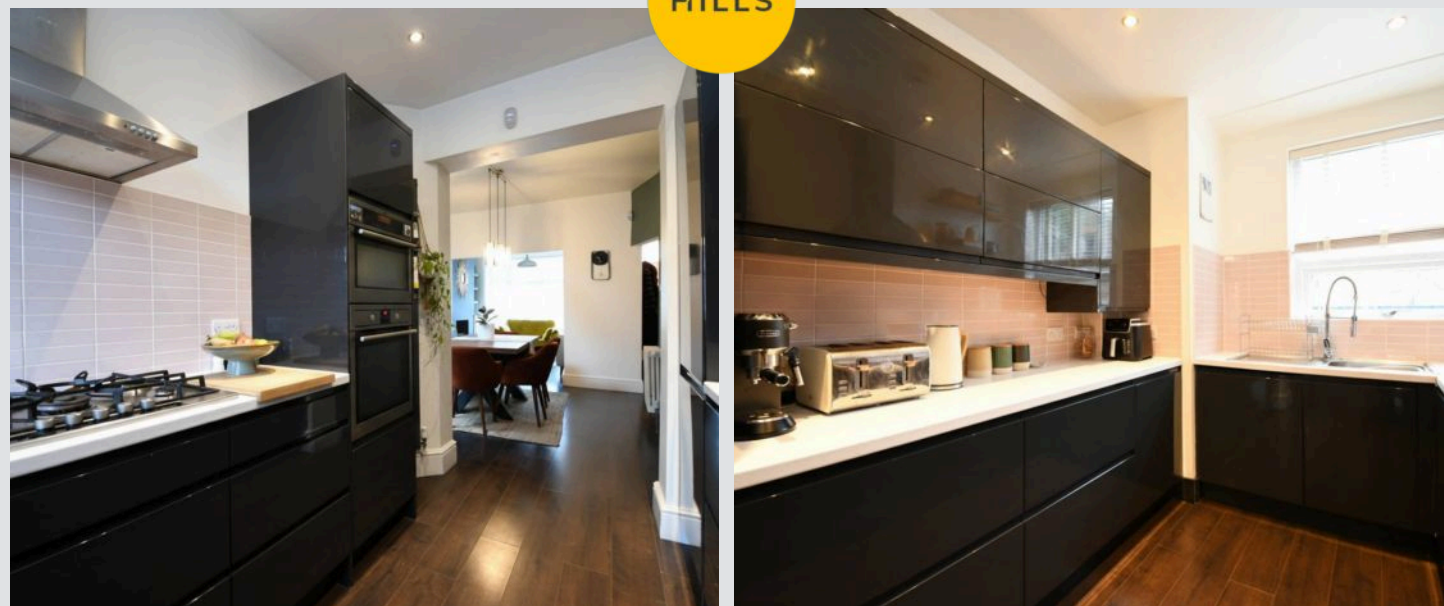
12' 0" x 9' 0" (3.65m x 2.74m)

Bathroom

9' 0" x 9' 0" (2.74m x 2.74m)



HILLS



Entrance Hallway

Reception One

14' 0" x 10' 0" (4.26m x 3.04m)

Reception Two

13' 0" x 11' 0" (3.96m x 3.35m)

Kitchen

11' 0" x 7' 0" (3.35m x 2.13m)

Bedroom One

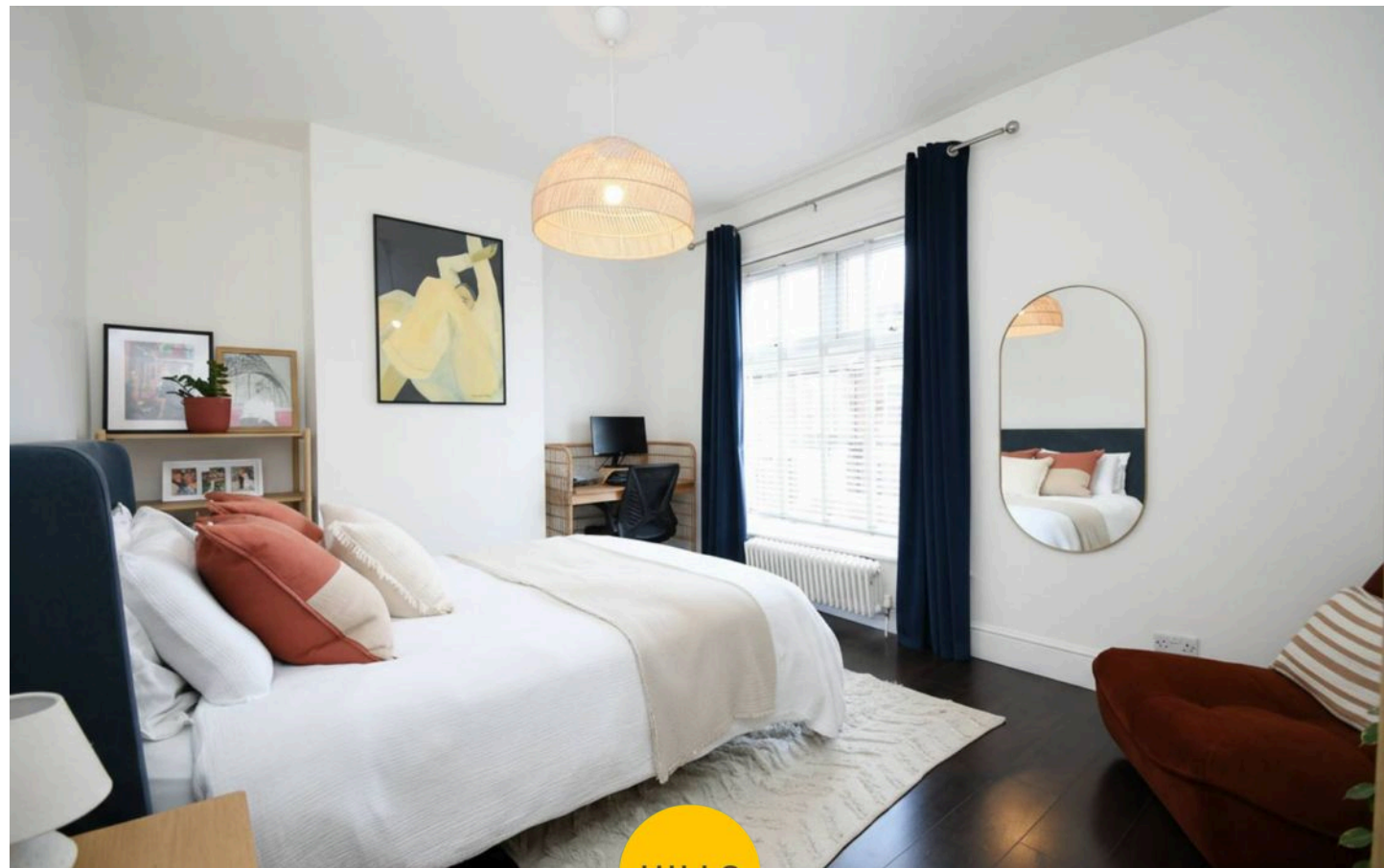
14' 0" x 11' 0" (4.26m x 3.35m)

Bedroom Two

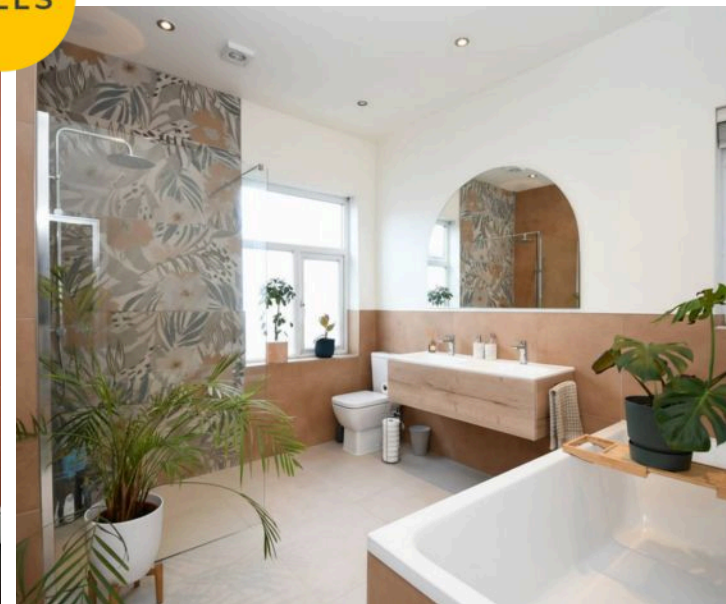
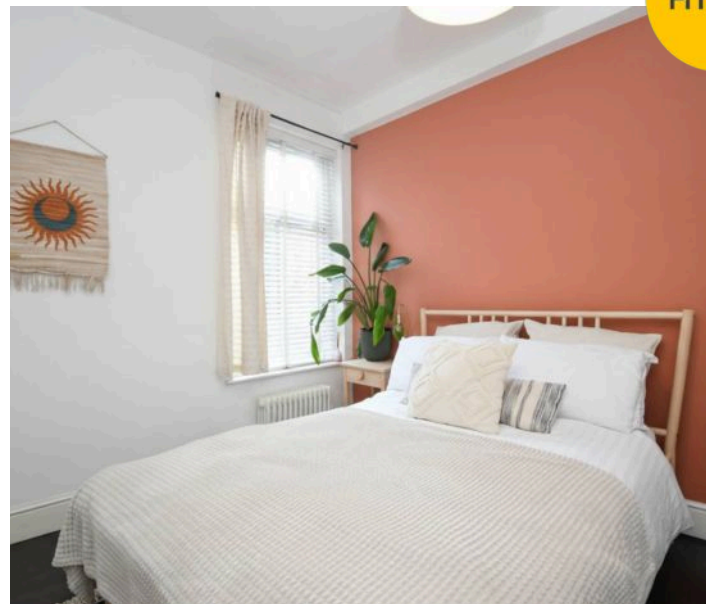
12' 0" x 9' 0" (3.65m x 2.74m)

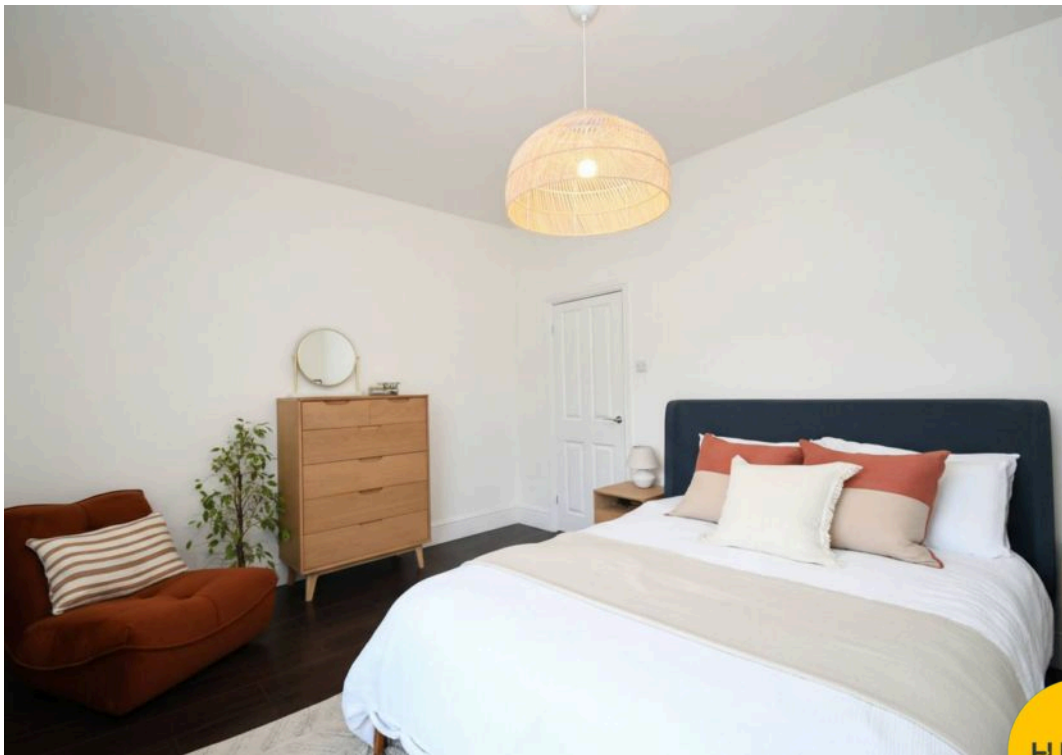
Bathroom

9' 0" x 9' 0" (2.74m x 2.74m)



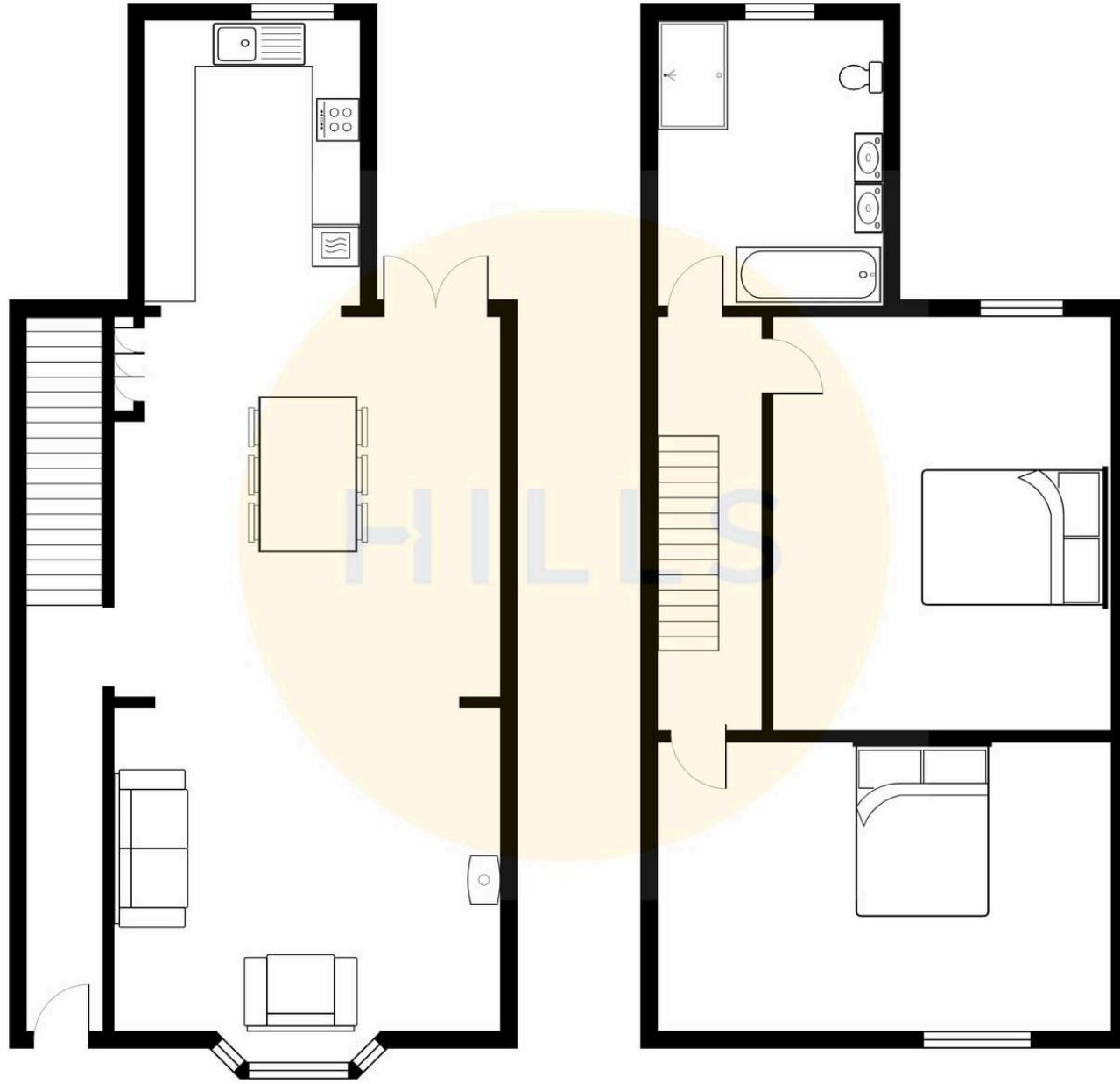
HILLS





HILLS







Hills | Salfords Estate Agent

Hills Residential, Sentinel House Albert Street – M30 0SS

0161 707 4900

sales@hills.agency

www.hills.agency/



By law, we are required to conduct anti-money laundering checks on all potential buyers and sellers. In line with HMRC guidelines, our trusted partner, Coadjute, will securely manage these checks on our behalf. A non-refundable fee of £45 + VAT per person will apply, and Coadjute will handle the payment. Once an offer is accepted, Coadjute will send a secure link for you to complete the biometric checks. These checks must be completed before we can send the memorandum of sale to all parties. PLEASE NOTE: The Agent has not tested any equipment, fixtures, fittings or services so cannot verify that they are in working order or fit for the purpose. References to the properties tenure are based on information supplied by the seller. You are advised to check the availability of this property before travelling any distance to view. Every effort has been made to ensure these particulars are correct and not misleading but their accuracy is not guaranteed nor do they form part of any contract.