

Findlay Street, Leigh

Leigh



£200,000



# 57 Findlay Street

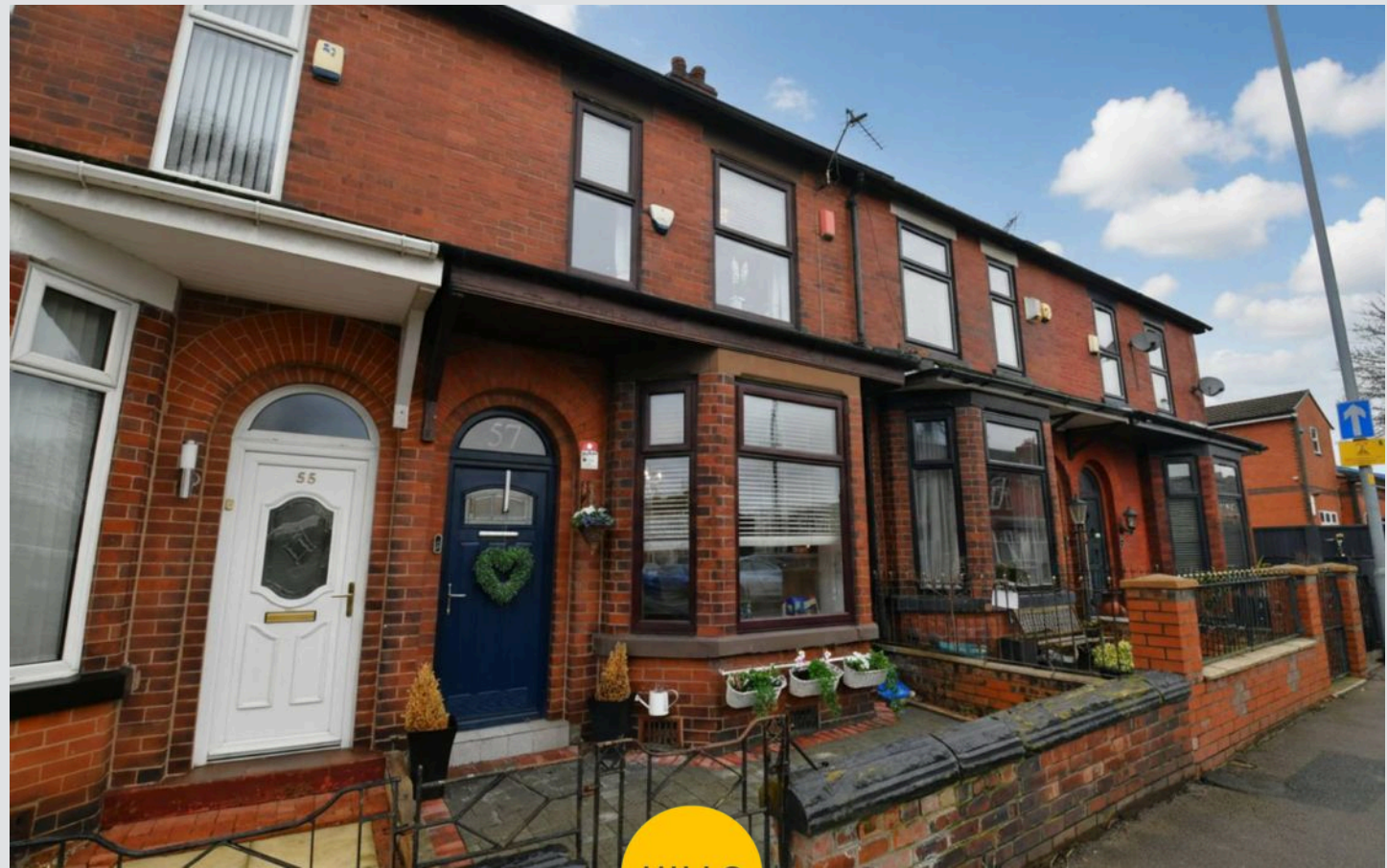
Leigh, Leigh

TAKE A LOOK at this beautifully presented, bay-fronted property located on a popular road. With an abundance of space, a convenient location and high ceilings – what's not to love?

Council Tax band: B

Tenure: Freehold

- Beautifully Presented Two Bedroom Bay-Fronted Terraced Property
- Boasting a Loft Room which the Current Owners Use as a Bedroom
- Situated on a Popular Road Within Walking Distance of Parsonage Retail Park
- Spacious, Bay-Fronted Family Lounge
- Large Open Plan Dining and Kitchen Area
- Complete with a Modern Kitchen Installed 5 Years Ago
- Two Well-Proportioned Bedrooms and a Large Three-Piece Family Bathroom
- Low-Maintenance Courtyard Gardens to the Front and Rear
- Close to Transport Links into Manchester and Warrington
- Early Viewing is Essential!



HILLS



### Hallway

### Lounge

11' 11" x 11' 1" (3.63m x 3.39m)

### Dining Room

14' 10" x 12' 11" (4.53m x 3.93m)

### Kitchen

11' 11" x 7' 5" (3.63m x 2.25m)

### Landing

### Bedroom One

14' 9" x 9' 8" (4.50m x 2.94m)

### Bedroom Two

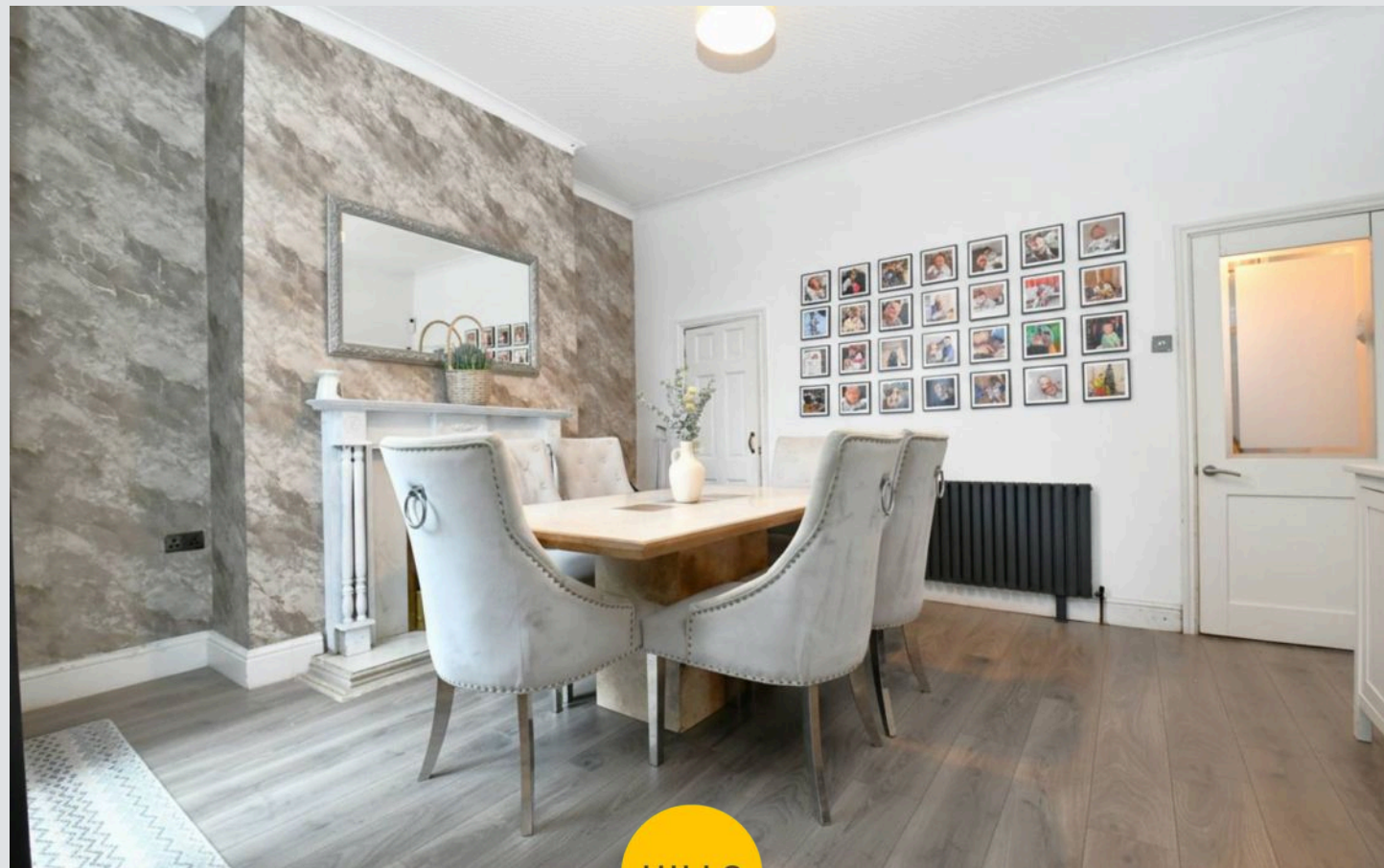
12' 10" x 7' 3" (3.92m x 2.20m)

### Bathroom

12' 9" x 7' 3" (3.89m x 2.22m)

### Loft Room

13' 9" x 10' 1" (4.18m x 3.08m)



HILLS





## Hallway

## Lounge

11' 11" x 11' 1" (3.63m x 3.39m)

## Dining Room

14' 10" x 12' 11" (4.53m x 3.93m)

## Kitchen

11' 11" x 7' 5" (3.63m x 2.25m)

## Landing

## Bedroom One

14' 9" x 9' 8" (4.50m x 2.94m)

## Bedroom Two

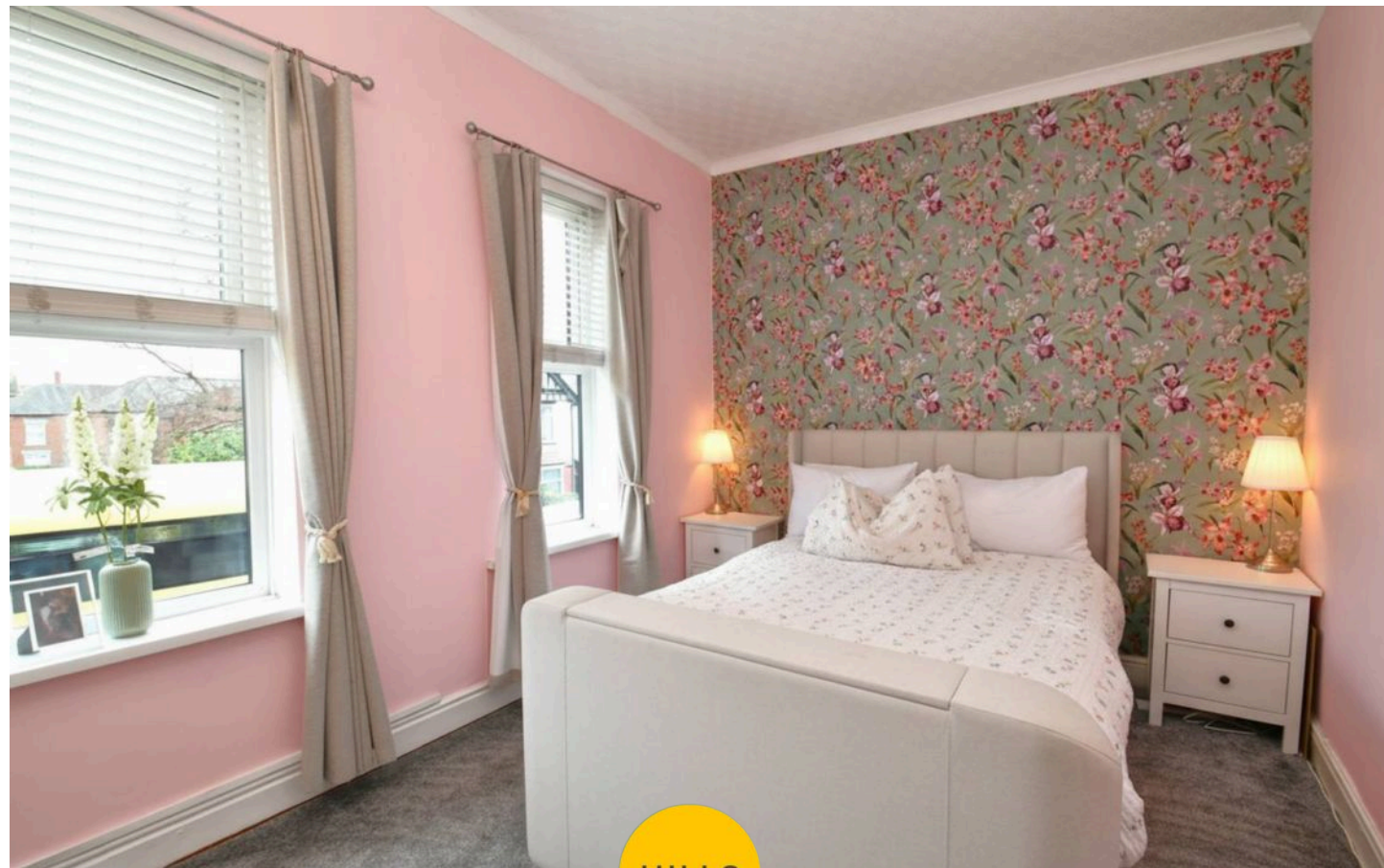
12' 10" x 7' 3" (3.92m x 2.20m)

## Bathroom

12' 9" x 7' 3" (3.89m x 2.22m)

## Loft Room

13' 9" x 10' 1" (4.18m x 3.08m)

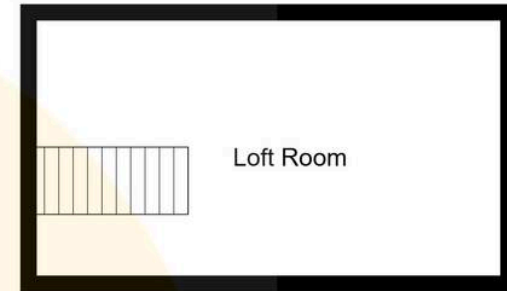
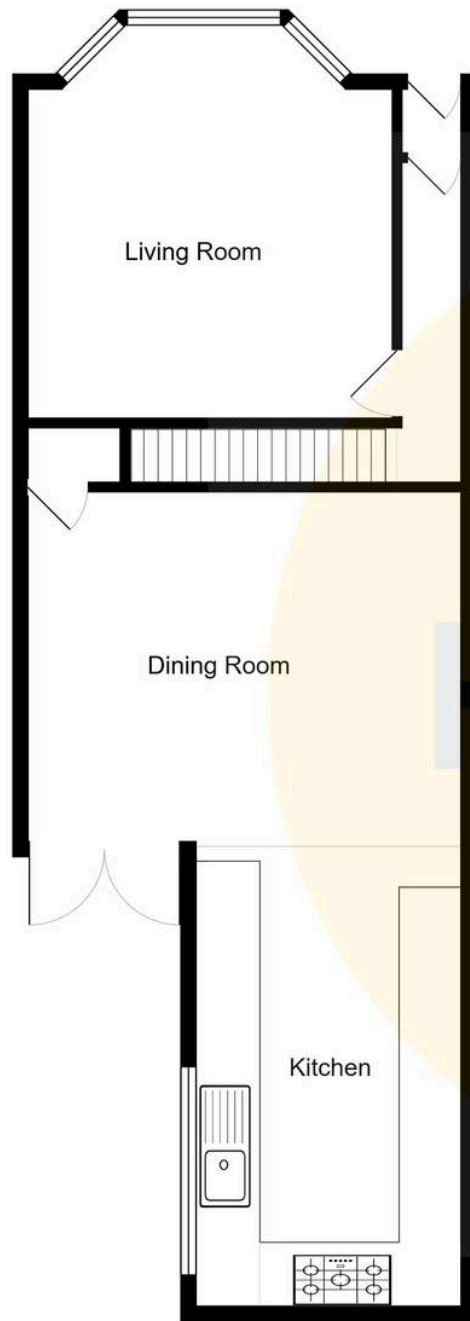






HILLS









## Hills | Salfords Estate Agent

Hills Residential, Sentinel House Albert Street – M30 0SS

0161 707 4900

[sales@hills.agency](mailto:sales@hills.agency)

[www.hills.agency/](http://www.hills.agency/)



By law, we are required to conduct anti-money laundering checks on all potential buyers and sellers. In line with HMRC guidelines, our trusted partner, Coadjute, will securely manage these checks on our behalf. A non-refundable fee of £45 + VAT per person will apply, and Coadjute will handle the payment. Once an offer is accepted, Coadjute will send a secure link for you to complete the biometric checks. These checks must be completed before we can send the memorandum of sale to all parties. PLEASE NOTE: The Agent has not tested any equipment, fixtures, fittings or services so cannot verify that they are in working order or fit for the purpose. References to the properties tenure are based on information supplied by the seller. You are advised to check the availability of this property before travelling any distance to view. Every effort has been made to ensure these particulars are correct and not misleading but their accuracy is not guaranteed nor do they form part of any contract.