



Bramble Lodge Slades Lane

Galleywood, Chelmsford

First impressions count, and it doesn't get much better than this. Upon arrival at the private gates of Bramble Lodge, excitement builds for what's to be found beyond.

Council Tax band: G

Tenure: Freehold

EPC Energy Efficiency Rating: D

EPC Environmental Impact Rating: D





Bramble Lodge Slades Lane

Galleywood, Chelmsford

First impressions count, and it doesn't get much better than this. Upon arrival at the private gates of Bramble Lodge, excitement builds for what's to be found beyond... A long driveway reveals itself, which leads past the immaculate front gardens to the house and triple garaging, both set back beautifully in the plot.

The property has been tastefully enhanced with no expense spared, with features such as a Mark Wilkinson kitchen; a Martin Chadder bathroom suite; impressive entrance gates; and a magnificent, bespoke swimming pool.

The grounds of approximately 1.5 acres are also sure to impress. The combination of formal lawns, entertaining spaces and an ornamental pond truly are fit for a wedding venue, and the garaging will appeal greatly to the motoring enthusiast.

Once inside, accommodation is centred around a wide hallway with wonderful flooring from old French Railway carriages. From here, access is gained to a formal lounge, a further sitting room, open plan study, utility room, and the stunning kitchen with extended, glazed seating area.

The kitchen is of particular note, being crafted by Mark Wilkinson. It is simply stunning, with hand-painted shaker units giving a modern classic feel, coupled with a range of Sub Zero appliances – simply the best.

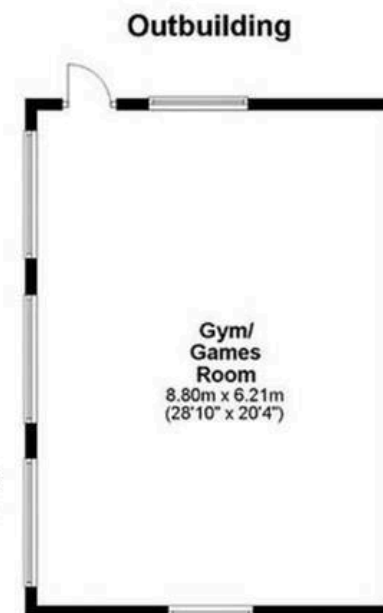
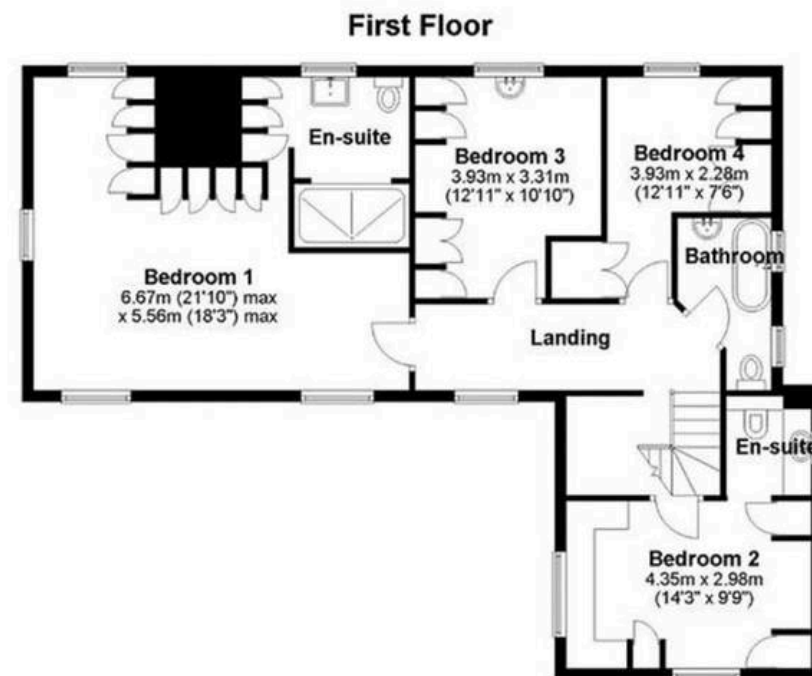
The first floor offers luxury bedroom accommodation to include a fantastic master bedroom suite, plus four further bedrooms and a











APPROX INTERNAL FLOOR AREA
MAIN HOUSE 236 SQ M 2544 SQ FT
OUTBUILDINGS 55 SQ M 588 SQ FT
TOTAL 291 SQ M 3135 SQ FT

This plan is for layout guidance only and is
NOT TO SCALE
 Whilst every care is taken in the preparation of
 this plan, please check all dimensions, shapes &
 compass bearings before making any decisions
 reliant upon them.

About Us

Walkers | People & Property is built on a lifelong family passion for homes. Martin, Gillian and Adam Walker lead a respected, professional team who live and breathe all aspects of property. With over 30 years of experience, we understand the moving process on a personal level and are committed to delivering exceptional results. Most of all, helping people move is our hobby, and handing over the keys to excited buyers remains our favourite moment.

Get In Touch



Browse Properties



Contact Us
01277 355005



Our Website
www.walkersstates.co.uk



Our Address
90 High Street
Ingatstone
CM14 9DW



www.walkersstates.co.uk

Walkers
People & Property

Psst... Have you heard of
Walkers discreet marketing?

Many people lose out on their dream home to someone in a better position. Often, it is because they have delayed putting their house on the market, preferring to find somewhere first and then sell.

That is why we have innovated a totally unique and highly confidential moving home solution to put you in a competitive position.

Let us find you a buyer **without any advertising or pressure** and without the neighbours knowing.

Your secret is safe with us....

Get in touch for a **complimentary** valuation.
Looking To Sell Or Let Your Home?

Book your free valuation to see how much your home is worth.