



Spring Cottage, 8 Lower Basingwell Street, Bishops Waltham - S
£625,000

WHITE & GUARD

Spring Cottage, 8 Lower Basingwell Street

Bishops Waltham, Southampton

Believed to date to around the 18th Century and situated in the very heart of the village is this Grade II Listed cottage, showcasing a beautifully appointed interior and an incredible rear garden which extends to around 400ft. Exuding both charm and character features throughout, the property boasts exposed beams and an open fire place, plus extended accommodation which includes a striking kitchen dining room with vaulted sky lantern. Furthermore, the cottage offers two additional reception rooms, a four piece bathroom suite, en-suite shower room and first-floor WC. Completing the extensive accommodation are two well proportioned double bedrooms and a loft room / third bedroom.

LOCATION

The property benefits from being in Bishop Waltham's vibrant village centre which offers a broad range of shops and local amenities including shops, post office, pubs, a doctor's surgery and regular bus services. The neighbouring village of Botley is only minutes away and provides a mainline railway station with both Winchester city centre and Southampton Airport being just under half an hour away. All main motorway access routes are within easy reach. This historic market town is set against a backdrop of beautiful Hampshire countryside and offers the convenience of superb transport links

- WINCHESTER COUNCIL BAND D
- EPC RATING D
- FREEHOLD
- 16TH CENTURY GRADE II LISTED COTTAGE
- EXUDES CHARM AND CHARACTER THROUGHOUT
- TWO / THREE BEDROOMS
- STUNNING KITCHEN DINING ROOM
- TWO RECEPTION ROOMS
- ENSUITE AND FAMILY BATHROOM
- BEAUTIFUL 400FT REAR GARDEN





INSIDE

Upon entry into "Spring Cottage" you are greeted by an impressive 16ft 7 living room with Victorian sash window to the front elevation and a wonderful open fire with brick surround and wooden mantle over. Providing the perfect blend of old and new, the room is laid to modern tiled flooring and has original exposed beams, while there is a bespoke fitted storage cupboard and doors leads to a flight of stairs and the sitting room. A well-appointed sitting room, also laid to tiled flooring has fitted dresser units to either side of chimney breast and double doors to the rear open into the extended ground floor accommodation. The inner hallway showcases a vaulted skylight, fitted storage cupboard and an internal oak door leads through to a four piece bathroom suite. The suite comprises a walk in mains shower with frosted glazed shower screen, a fitted bath, inset wash hand basin with fitted oak countertop, WC and heated towel rail. The room is finished with tiling to the principal areas, feature half panelled walls and a vaulted sky light. Sure to be the hub to this wonderful home is an open plan kitchen dining room with a feature sky lantern and exposed oak beams throughout. The kitchen itself, comprises a range of matching wall and base units with fitted oak work surfaces over which incorporate an inset butler sink and provides space for a range cooker. Integrated appliances include a fridge freezer, dishwasher and washing machine. A dedicated dining area is found at the rear of the room and oak framed double doors open onto a courtyard style patio terrace perfect for alfresco dining.

The first floor landing provides convenient access to a well presented cloakroom room, complete with a WC, stone countertop and surface mounted bowl sink. The master bedroom positioned at the rear of the house, is a well-proportioned double room with an excellent range of fitted wardrobes and has an exposed beamed ceiling. The adjacent en-suite has a double glazed window overlooking the garden and a suite which includes a walk in shower with ceiling mounted rainfall shower head, WC, wash hand basin and a feature tiled wall and flooring. Bedroom two, also a good size double room has a fitted storage cupboard, feature beamed ceiling and Victorian sash window to the front elevation. A flight of stairs found within bedroom two, lead to the top floor where an attic room can be found which is currently utilised as homeworking office and could also lend itself as a third bedroom / guestroom.



OUTSIDE

The impressive rear garden is a notable feature to this lovely home, landscaped and presented in beautiful order the space extends to around 400ft. Offering two seating terraces, a large and well maintained lawn and a large timber framed home office / summer house with decking terrace. The garden is set with a range of well established shrubs, plants and trees providing a wonderful setting to enjoy. The property offers rear pedestrian access to Jubilee Hall (found off Little Shore Lane)

SERVICES:

Gas, water, electricity and mains drainage are connected. Please note that none of the services or appliances have been tested by White & Guard.

Boardband : Fibre to the Cabinet Broadband Up to 15 Mbps upload speed Up to 76 Mbps download speed. This is based on information provided by Openreach.

T: 01489 893946
Brook House, Brook Street, Bishops Waltham,
Southampton, Hampshire, SO32 1AX
E: bishopswaltham@whiteandguard.com
W: whiteandguard.com

ANTI-MONEY LAUNDERING REGULATIONS

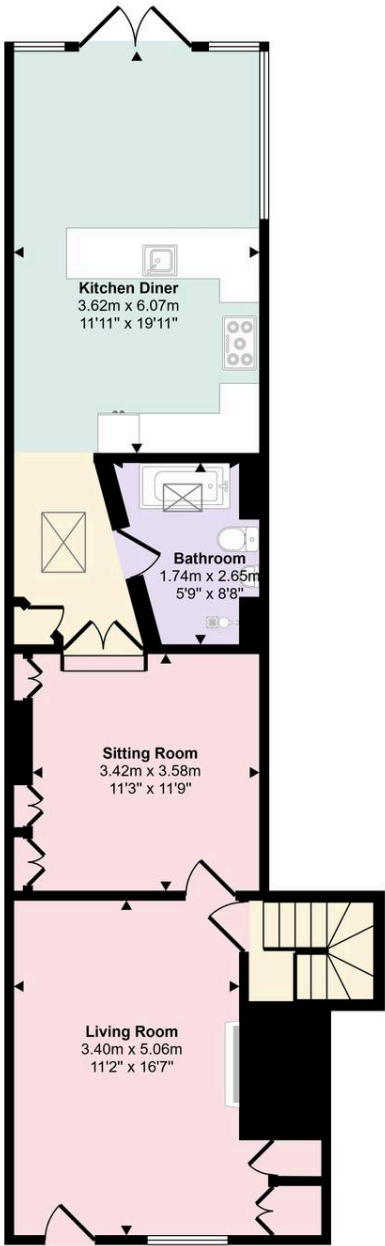
Buyers: If you have an offer accepted on a property through White & Guard, under Anti-Money Laundering Regulations (2017), we are required by law to conduct Anti-Money Laundering Checks. There is a charge of £30 + VAT per applicant.

Sellers: Upon receipt of instructions to act in the selling of your home, under Anti-Money Laundering Regulations (2017), we are required by law to conduct Anti-Money Laundering Checks. There is a charge of £30 + VAT per owner.

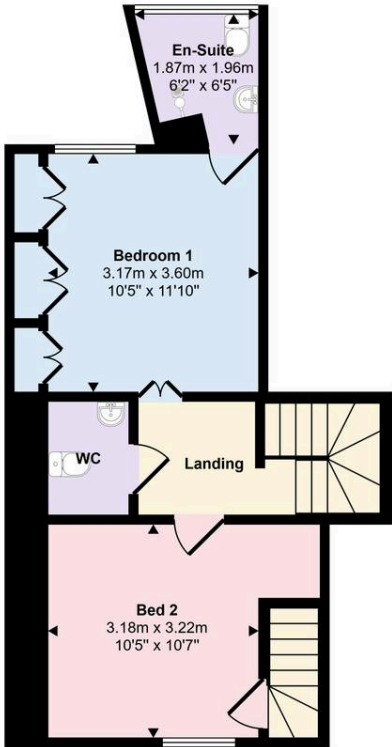
DISCLAIMER

These particulars are not to form part of a Sale Contract owing to the possibility of errors and/or omissions. Prospective purchasers should therefore satisfy themselves by inspection or otherwise as to their correctness. All fixtures, fittings, chattels and other items not mentioned are specifically excluded, unless otherwise agreed within the Sale Contract documentaries or left in situ and gratis upon completion. The property is also sold subject to rights of way, public footpaths, easements, wayleaves, covenants and any other matters which may affect the legal title. The Agent has not formally verified the property's structural integrity, ownership, tenure, acreages, estimated square footage, planning/building regulations status or the availability/operation of services and/or appliances. Therefore, prospective purchasers are advised to seek validation of all the above matters prior to expressing any formal intent to purchase.

Approx Gross Internal Area
129 sq m / 1392 sq ft



Ground Floor
Approx 71 sq m / 768 sq ft



First Floor
Approx 42 sq m / 456 sq ft



Second Floor
Approx 16 sq m / 168 sq ft

This floorplan is only for illustrative purposes and is not to scale. Measurements of rooms, doors, windows, and any items are approximate and no responsibility is taken for any error, omission or mis-statement. Icons of items such as bathroom suites are representations only and may not look like the real items. Made with Made Snappy 360.