



Hillcroft Dunton Road, Steeple View

Basildon

Guide Price £500,000 – £525,000



Hillcroft Dunton Road

Steeple View

Council Tax band: E

Tenure: Freehold

EPC Energy Efficiency Rating: D

EPC Environmental Impact Rating: E

- NO ONWARD CHAIN
- OVERLOOKING FIELDS
- OPEN PLAN KITCHEN/BREAKFAST
- UTILITY
- GROUND FLOOR WC
- TWO RECEPTION ROOMS
- LOCAL AMENITIES
- HIGHLY REGARDED LOCAL SCHOOLS
- SOUTH-FACING
- FAMILY ROOM

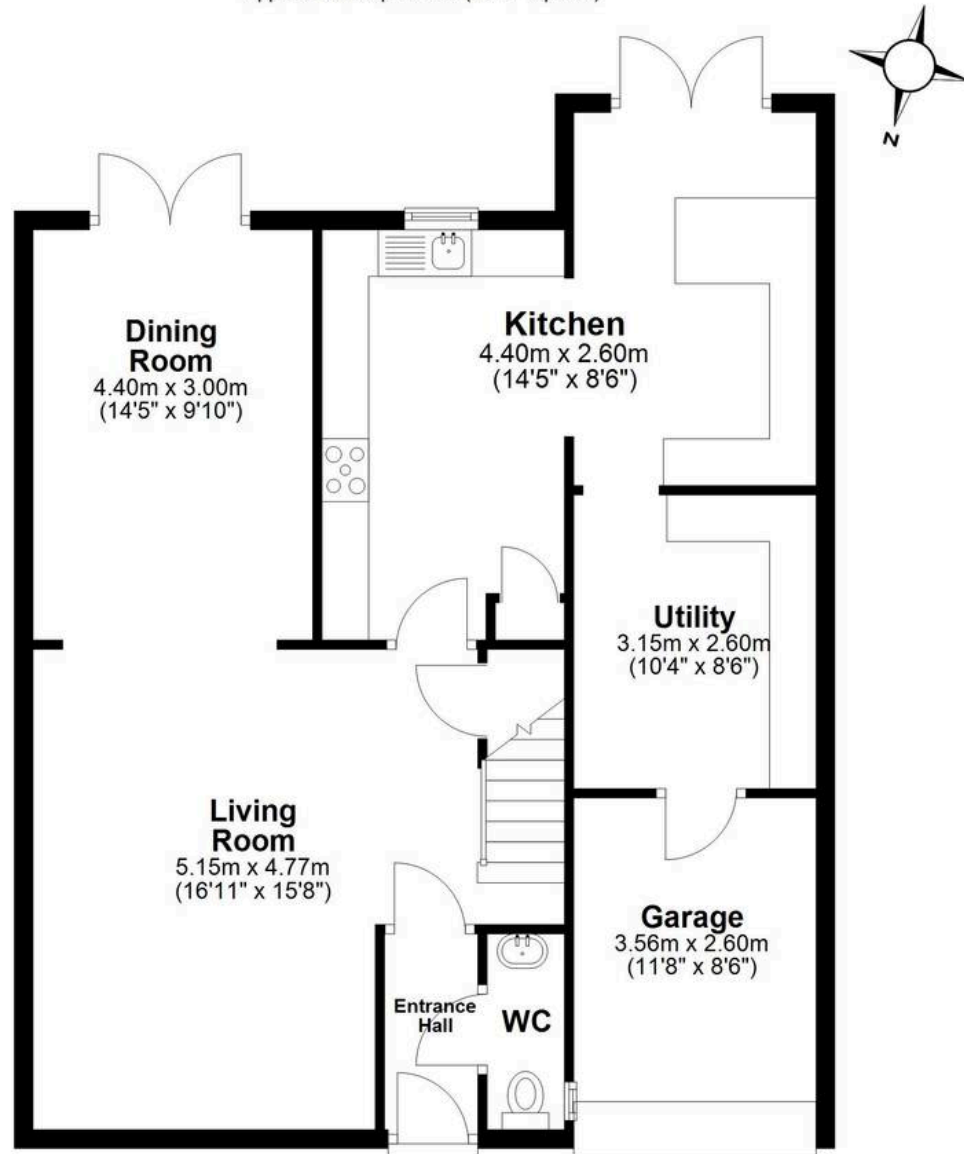
Welcome to this fantastic four bedroom detached home, offered with no onward chain and ready for you to move straight in. The property enjoys a lovely south-facing aspect and overlooks open fields, giving you a real sense of space and tranquillity. Step inside and you'll find a bright, open plan kitchen and breakfast area (perfect for family mornings), plus a handy utility room and a ground floor WC for added convenience. There are two generous reception rooms, so whether you want a cosy lounge or a dedicated dining space, you're covered. The additional family room is ideal for movie nights, daytime, or even a home office setup.





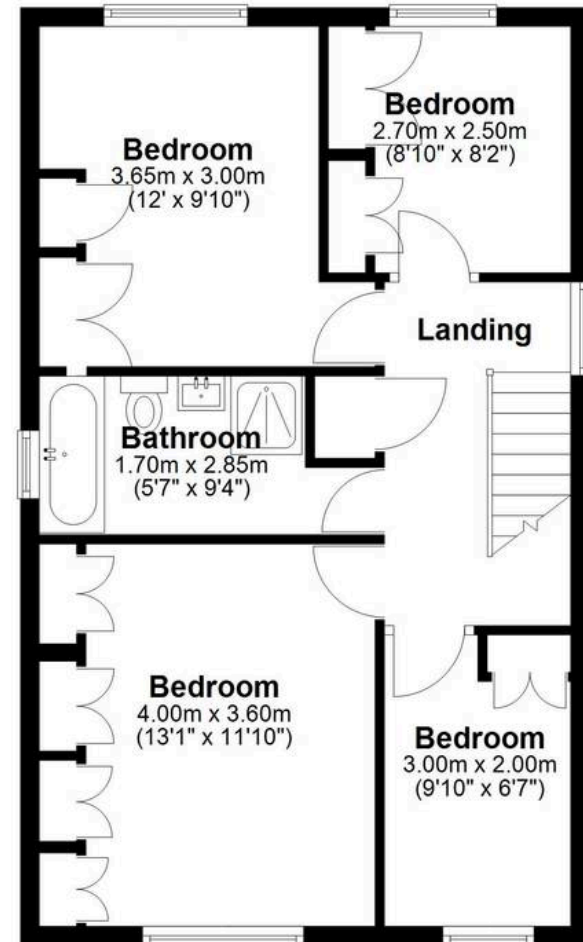
Ground Floor

Approx. 84.3 sq. metres (907.7 sq. feet)



First Floor

Approx. 54.3 sq. metres (584.2 sq. feet)



Total area: approx. 138.6 sq. metres (1491.9 sq. feet)

This floor plan has been created by a third party and should be used as a general outline for guidance only. Any areas, measurements or distances quoted are approximate and any intending purchaser or lessee should satisfy themselves by inspection, searches, enquiries and/or full survey as to the correctness of each statement. We accept no responsibility or liability for any loss whatsoever that may arise as a result of this plan and the information contained within.

© @modephotouk | www.modephoto.co.uk
Plan produced using PlanUp. □

HillCroft, Dunton Road



Stanton Hockett

Stanton Hockett Ltd, Hill House - CM12 9BQ

01277714777 • hello@stantonhockett.co.uk • www.stantonhockett.co.uk/