



10 Kent Road, Nottingham – NG3 6BE

Guide Price £260,000

DavidJames
the estate agent



10 Kent Road

Nottingham, Nottingham

NO CHAIN! Traditional semi-detached home in the highly regarded area of Mapperley. Featuring stylish dining kitchen alongside 3 double beds, contemporary bathroom and large southerly-facing garden!

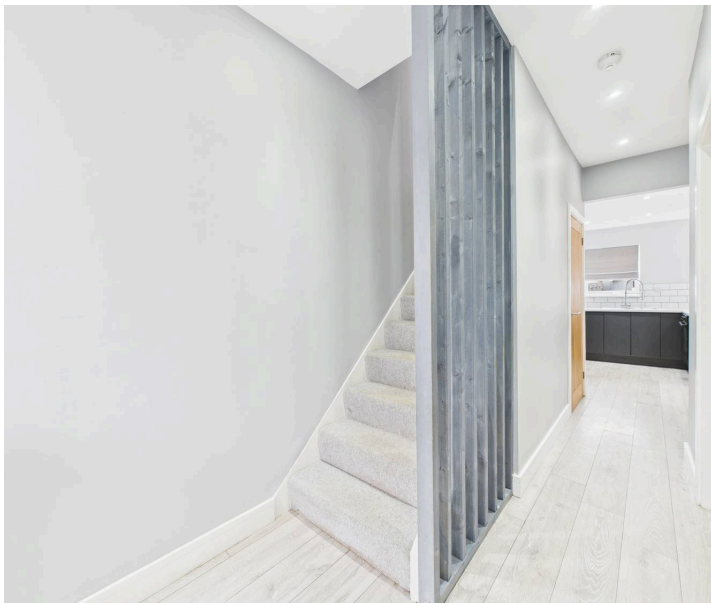
Council Tax band: B

Tenure: Freehold

EPC Energy Efficiency Rating: C

EPC Environmental Impact Rating: D

- Traditional semi-detached home with no chain
- Highly regarded area of Mapperley with amenities and bus links close by
- Welcoming entrance hallway with convenient ground floor WC
- Stylish kitchen area with breakfast bar and integrated cooking appliances
- Spacious dining area with Bi-fold doors opening onto the rear garden
- Bright and spacious lounge with feature coffered ceiling
- Three well-proportioned double bedrooms providing flexible accommodation
- Contemporary four-piece bathroom with feature bath and separate shower enclosure
- Large southerly-facing rear garden with decking and lawn
- Low maintenance front garden with off street parking

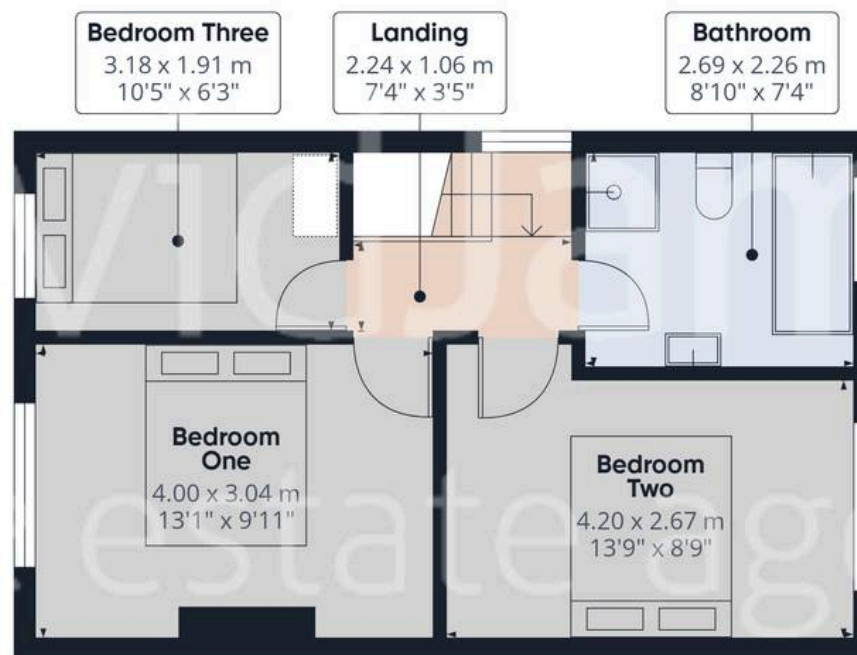








Floor 0



Floor 1



Approximate total area⁽¹⁾

79.8 m²

859 ft²

Reduced headroom

0.1 m²

1 ft²

(1) Excluding balconies and terraces

Reduced headroom

Below 1.5 m/5 ft

Calculations reference the RICS IPMS 3C standard. Measurements are approximate and not to scale. This floor plan is intended for illustration only.

GIRAFFE360



David James Estate Agents

David James Estate Agents, 45B Plains Road – NG3 5JU

0115 962 4213 • mapperley@david-james.com • www.david-james.com

These particulars are produced in good faith and are set out as a general guide only. Measurements are approximate and floor plans are for illustrative purposes only. Services have not been tested. We have established professional relationships with third-party suppliers for the provision of services to Clients, details of which can be found on the property listing page on our website.