



298a High Street, Methil – KY8 3EJ

Leven

Offers Over £69,995





298a High Street

Methil, Leven

One not to be missed.... A newly completed development of 2 x 1 Bedroom & 2 x 2 Bedroom Ground Floor Apartments finished to a high standard throughout, ideal for First Time Buyers with a fantastic rental yield of approx 9% per annum on each unit for investors. Award Winning Home Sweet Home Estate Agents Fife are delighted to present Apartment 298A is a superb apartment comprising Spacious 'L' Shaped Lounge/ Diner - Newly installed fitted Kitchen & Appliances - Two Bedrooms - Inner Hall with deep store - Modern Bathroom with electric shower. Benefitting from DG - ELECTRIC WET CENTRAL HEATING - EPC E - HOME REPORT £70,000. Externally enclosed low maintenance garden with South facing aspect, generous non designated off street parking. Viewing Highly Recommended.

Council Tax band: A

Tenure: Freehold

EPC Energy Efficiency Rating: E

EPC Environmental Impact Rating: B

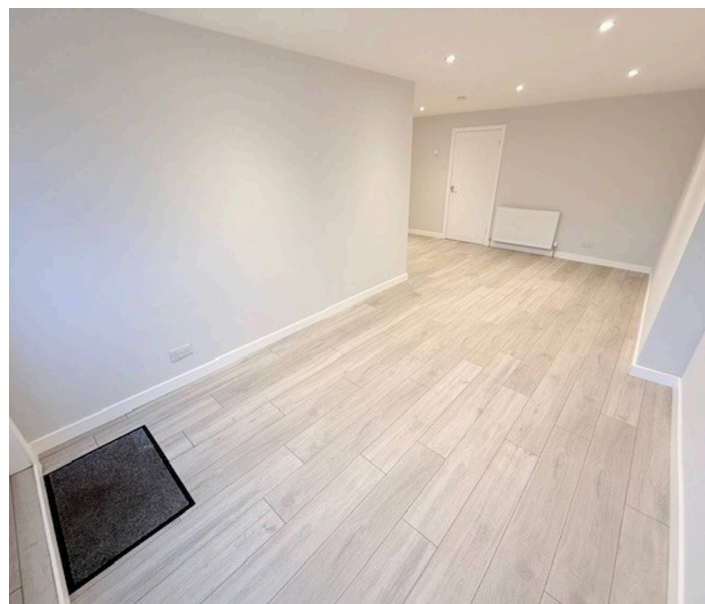
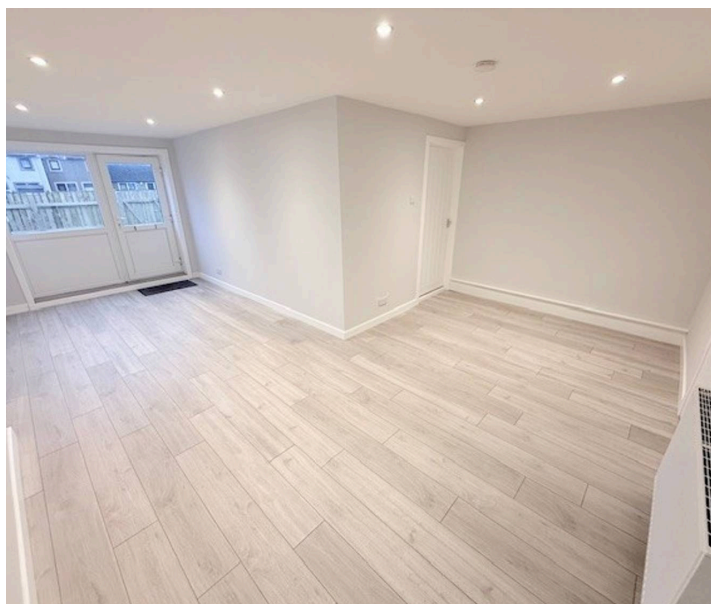
- BEAUTIFUL GROUND FLOOR APARTMENT
- TWO BEDROOMS ONE DOUBLE
- SPACIOUS 'L' SHAPED LOUNGE/DINER
- SEPARATE FITTED KITCHEN
- DG- GCH - EPC D - HOME REPORT £70,000
- 9% RENTAL YIELD POTENTIAL
- FENCE ENCLOSED GARDEN
- IDEAL STARTER HOME
- RECENTLY COMPLETED 4 APARTMENT DEVELOPMENT



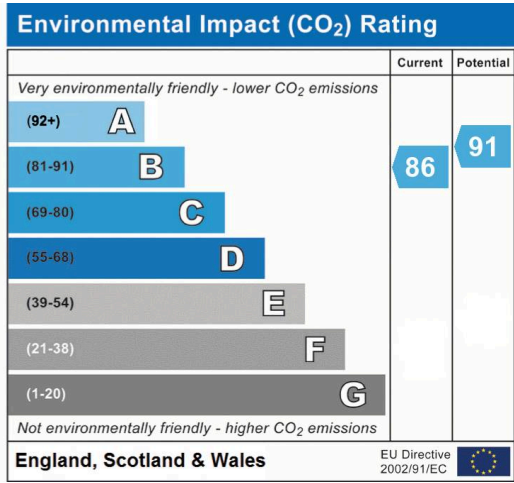
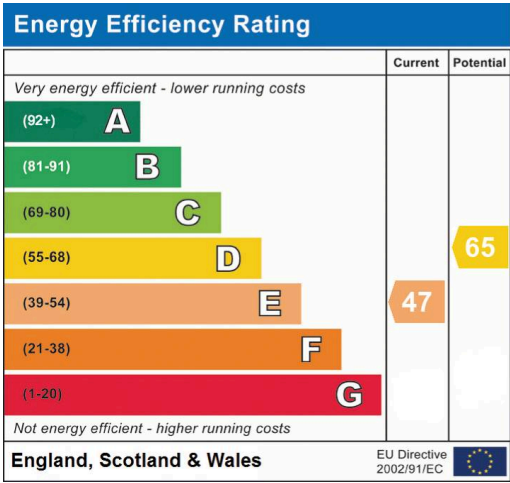
home sweet home
estate agents
your local property experts



GARDEN



home sweet home
estate agents
your local property experts



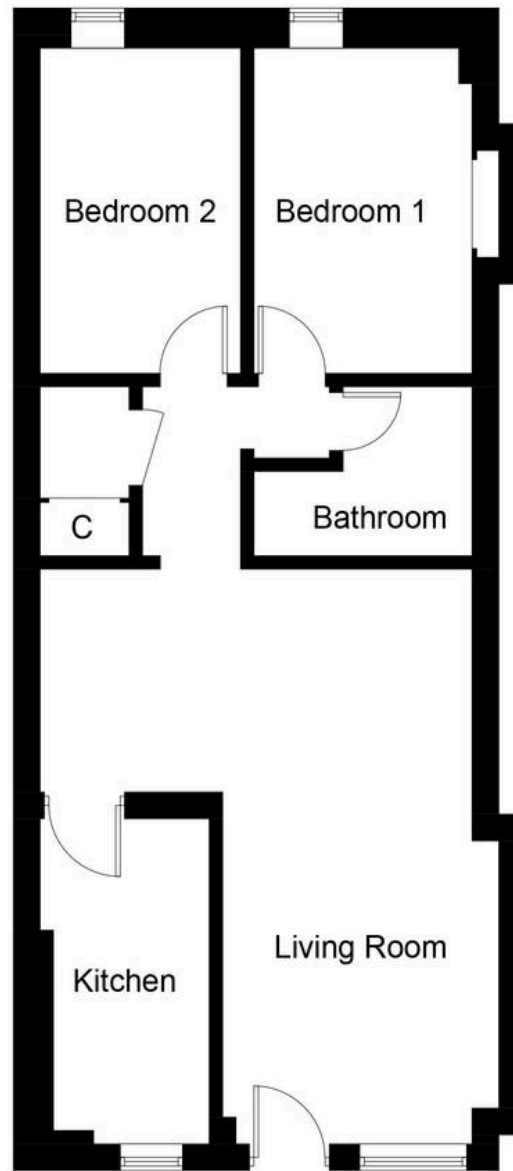


Illustration for identification purposes only, measurements are approximate,
not to scale. Fourlabs.co © (ID1272478)



home sweet home
estate agents
your local property experts