



298b High Street, Methil – KY8 3EJ

Leven

Offers Over £69,995





298b High Street

Methil, Leven

One not to be missed.... A newly completed development of 2 x 1 Bedroom & 2 x 2 Bedroom Ground Floor Apartments finished to a high standard throughout, ideal for First Time Buyers with a fantastic rental yield of approx 9% per annum on each unit for investors. Award Winning Home Sweet Home Estate Agents Fife are delighted to present Apartment 298B is a superb apartment comprising Spacious 'L' Shaped Lounge/ Diner - Newly installed fitted Kitchen & Appliances - Two Bedrooms - Inner Hall with deep store - Modern Bathroom with electric shower. Benefitting from DG - ELECTRIC WET CENTRAL HEATING - EPC E - HOME REPORT £70,000. Externally enclosed low maintenance garden with South facing aspect, generous non designated off street parking. Viewing Highly Recommended.

Council Tax band: A

Tenure: Freehold

EPC Energy Efficiency Rating: E

EPC Environmental Impact Rating: B

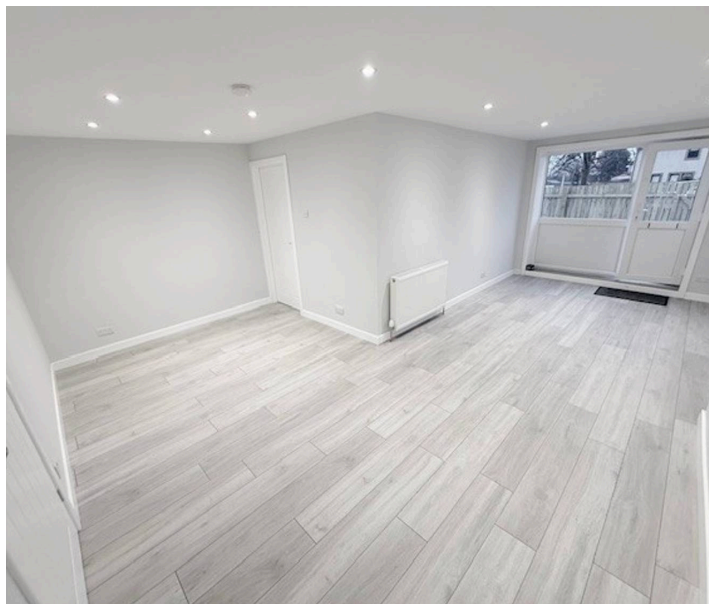
- BEAUTIFUL GROUND FLOOR APARTMENT
- TWO BEDROOMS ONE DOUBLE
- SPACIOUS 'L' SHAPED LOUNGE/DINER
- SEPARATE FITTED KITCHEN
- DG- ELECTRIC WET CENTRAL HEATING- EPC E
- 9% RENTAL YIELD POTENTIAL
- FENCE ENCLOSED GARDEN
- IDEAL STARTER HOME
- RECENTLY COMPLETED 4 APARTMENT DEVELOPMENT

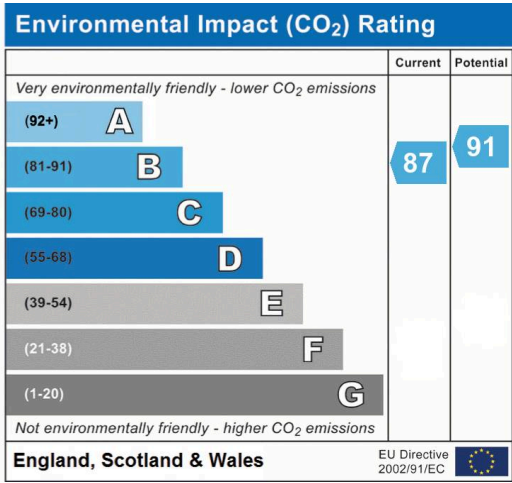
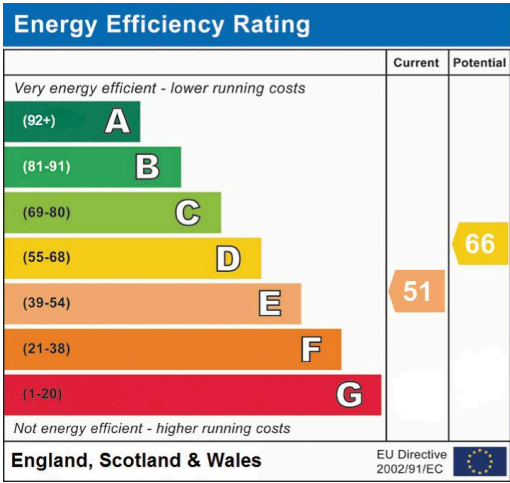
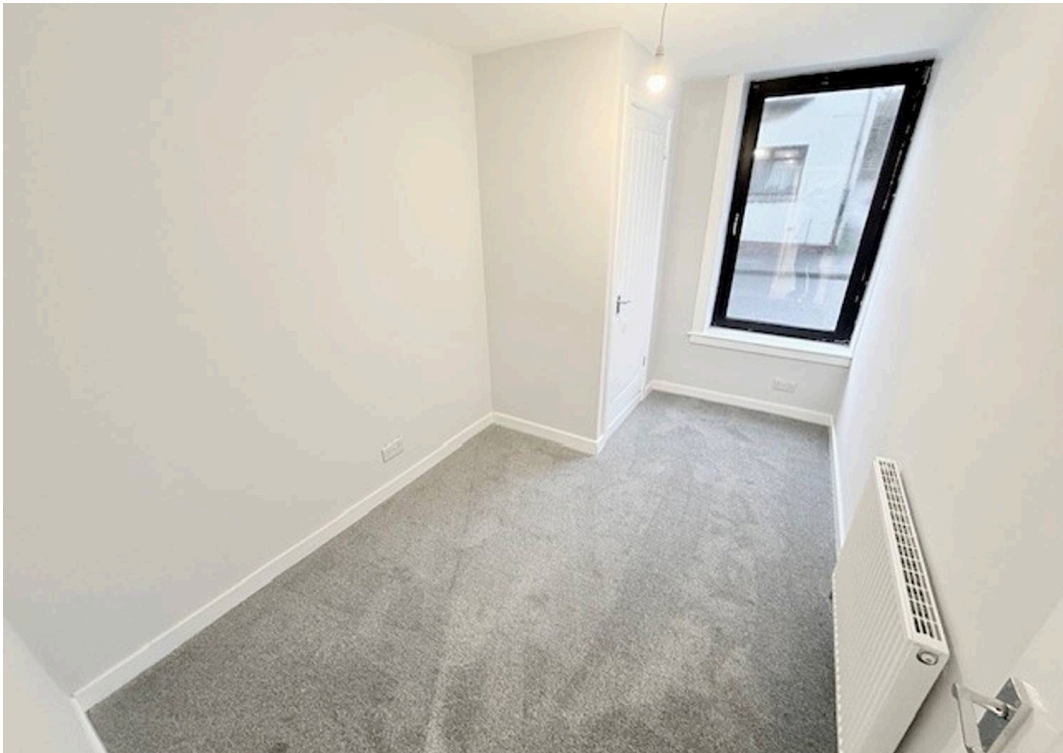


home sweet home
estate agents
your local property experts



GARDEN





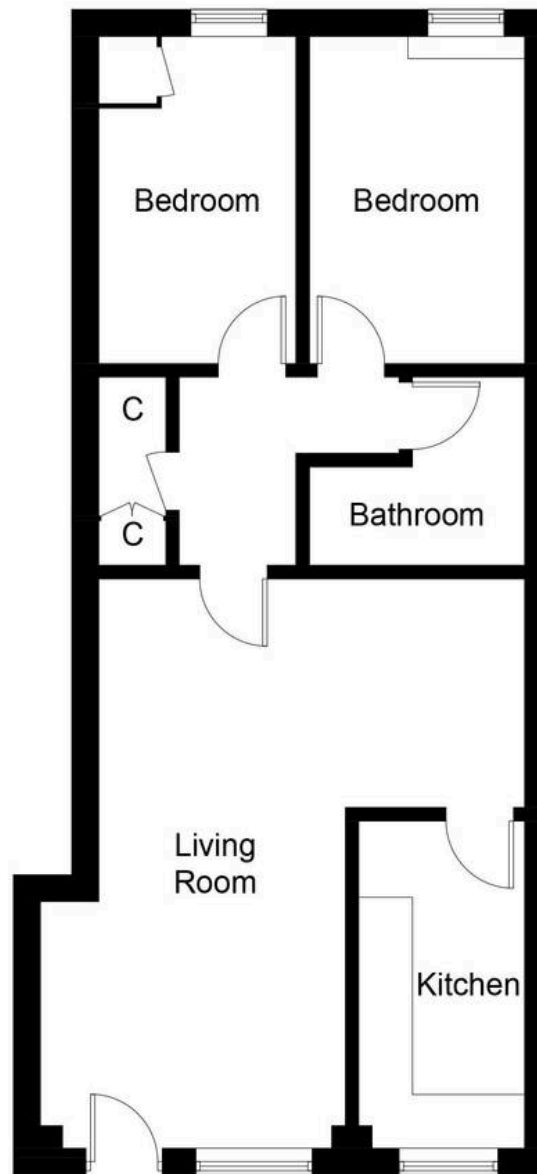


Illustration for identification purposes only, measurements are approximate, not to scale. Fourlabs.co © (ID1272479)



home sweet home
estate agents
your local property experts