



26 Spencer Court Sandgate Esplanade, Sandgate - CT20 3TJ

Guide Price **£175,000**

Approximate Gross Internal Area = 43 sq m / 463 sq ft

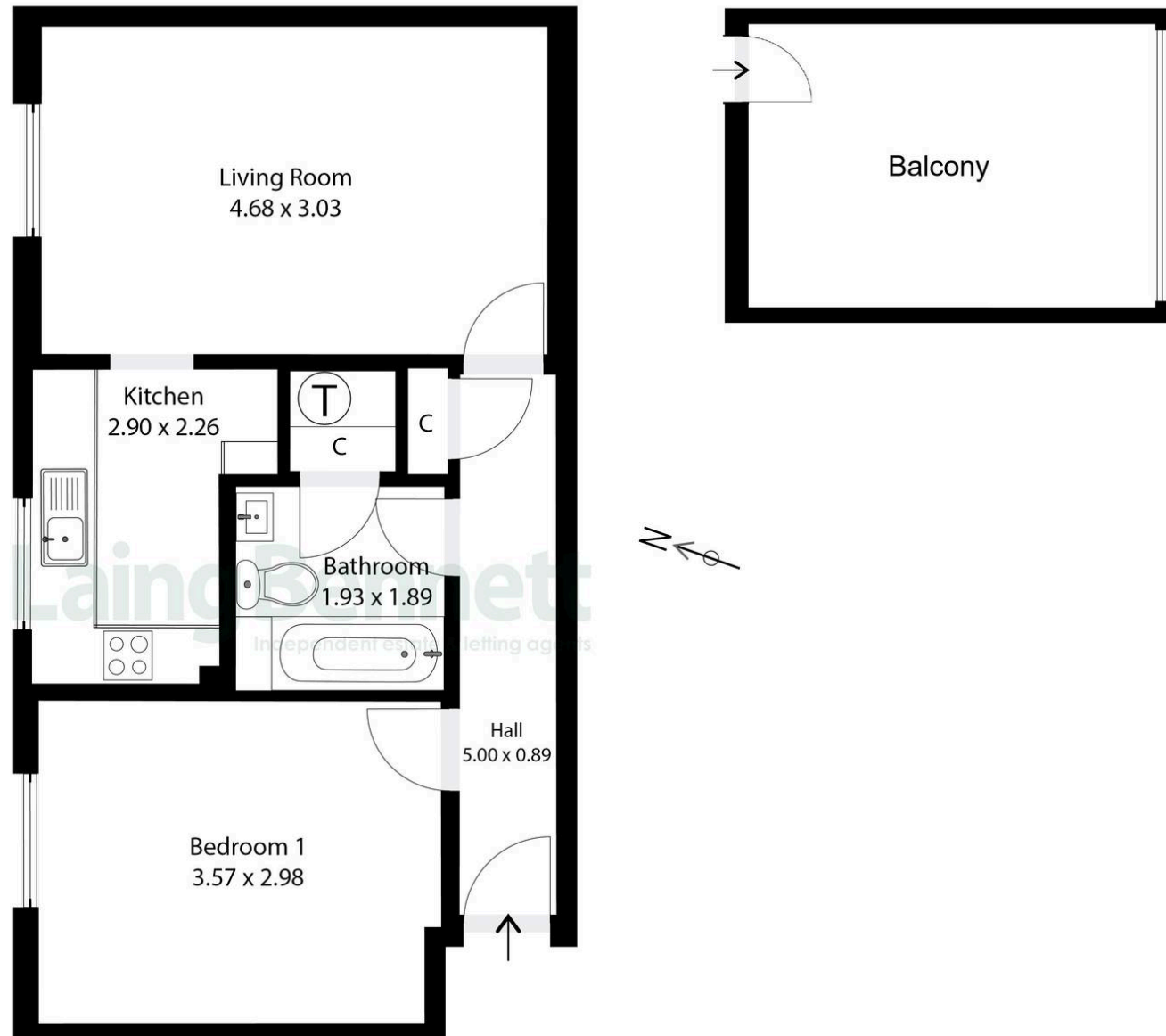


Illustration for Identification purposes only. Measurements are approximate. Dimensions given are between the widest points.

Not to scale. Outbuildings are not shown in actual location.

© Unauthorised reproduction prohibited - chriskemps@hotmail.com



26 Spencer Court Sandgate Esplanade

Sandgate, Folkestone

Welcome to this inviting one-bedroom apartment, situated in Sandgate on the seafront. Top floor living with accommodation comprising a hall, living/dining room, kitchen, bedroom and bathroom. This apartment benefits from a private balcony/terrace with breathtaking sea views, perfect for morning coffee or unwinding in the evening. Allocated parking space and communal gardens. The heating is via electric Bluetooth panel heaters. This apartment offers the ideal blend of comfort and lifestyle for those seeking a seaside retreat. No forward chain.

Council Tax band: A

Tenure: Leasehold

EPC Energy Efficiency Rating: D

EPC Environmental Impact Rating: D





Laing Bennett

Laing Bennett Ltd, The Estate Office, 8 Station Road – CT18 8HP

01303 863393

info@laingbennett.co.uk

www.laingbennett.co.uk/

DISCLAIMER – These details are for guidance only and do not form part of an offer or contract. Measurements are approximate. Laing Bennett Ltd and the Vendor/Landlord accept no liability. Services and appliances are untested. Applicants must make their own checks. Items shown may not be included. No staff have authority to give warranties.