



63a Salisbury Street, Kirkcaldy - KY2 5HP

Kirkcaldy

£750 pcm





63a Salisbury Street

Kirkcaldy, Kirkcaldy

New To Let & Available NOW a Beautiful Traditional 1st floor flat recently modernised & renovated to a high standard. Award Winning Home Sweet Home Estate Agents Fife are delighted to present to the market a stunning move in condition home comprising Vestibule - 'L' Shaped Entrance Hall with Utility Area - Open Plan Lounge/ Modern Fitted Kitchen - Two Double Bedrooms - Newly installed Bathroom. Shared garden to rear. Benefitting from DG- GCH - EPC C - LRN 536349/250/09012 - LARN2103004. Council Tax band: A

Tenure: Freehold

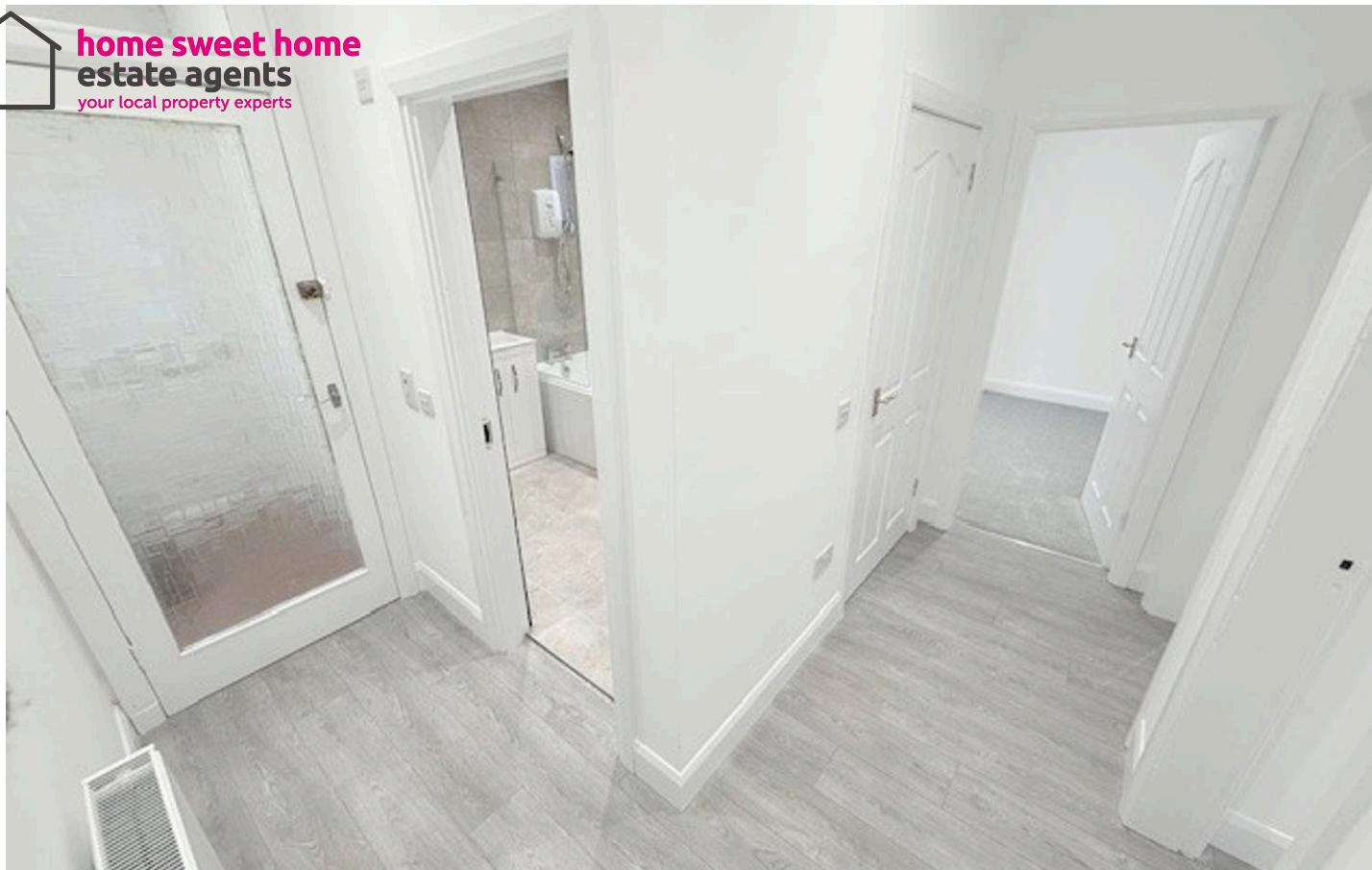
EPC Energy Efficiency Rating: C

EPC Environmental Impact Rating: D

- BEAUTIFUL TRADITIONAL 1ST FLOOR FLAT
- TWO DOUBLE BEDROOMS
- OPEN PLAN LOUNGE/ FITTED KITCHEN
- 'L' SHAPED HALLWAY - UTILITY AREA
- DG- GCH - EPC C
- LRN 536349/250/09012 - LARN2103004
- SHARED DRYING AREA & BIN STORE
- NO PETS - NO SMOKERS
- NEWLY FULLY REFURBISHED HOME



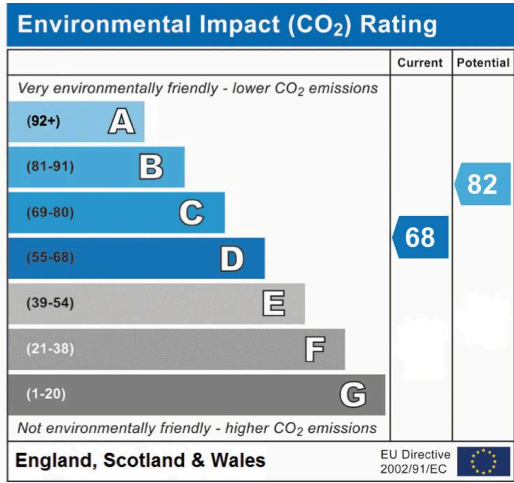
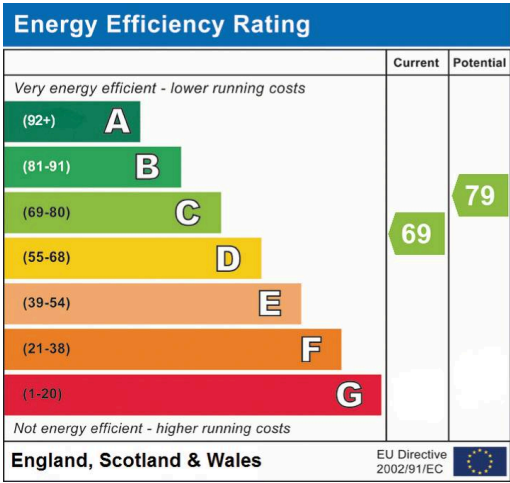
home sweet home
estate agents
your local property experts



COMMUNAL GARDEN



home sweet home
estate agents
your local property experts





home sweet home
estate agents
your local property experts